



New Build

NAU
YACHTS

B.NEOS

MOTOR YACHT BENETTI 40.63M 2028

FLAG -

MOTOR YACHT

B.NEOS



The **B.Neos 40M** is a new-generation displacement motor yacht measuring 40.63 m (up to 300 GT), designed for long-range cruising and comfortable living on board. The project focuses on a highly functional layout, low noise levels, and a clear separation between guest and service areas. The exterior styling was developed by MMYD, while the interior design and deck architecture were created by FM Architettura.

The yacht is equipped as standard with the MAN Smart Hybrid System by MAN. The system offers a fully electric mode for silent cruising and anchoring, a diesel-electric mode for efficient long passages, and a combined mode that optimizes power delivery and fuel consumption. The engine room layout has been engineered to minimize noise and vibration in the living areas, enabling the aft cockpit to function as a true waterside lounge - free from exhaust fumes and the constant operation of generators.

The yacht's architecture features a 2.4-meter-high Sea Atrium that directly connects the beach area with the interior spaces. Floor-to-ceiling panoramic glazing provides abundant natural light and a continuous visual connection to the sea. Teak decking flows seamlessly from the exterior into the interior, creating a smooth transition between indoor and outdoor areas.

Guest accommodation is arranged for 10 guests in 5 cabins. The owner's suite is located forward on the upper deck, with a total area of 24.8 m², a private lobby, and direct access to a dedicated outdoor deck. A 46.5 m² private terrace aft of the owner's suite provides an ideal space for open-air relaxation.

On the main deck, a Family Kitchen area is integrated with the galley for everyday use and can be separated by a glass partition when required. Crew accommodation consists of 4 cabins for up to 7 crew members, with independent access to ensure privacy and efficient service.

[see more information about M/Y B.Neos at www.nauyachts.com](http://www.nauyachts.com)

SPECIFICATION

SHIPYARD, MODEL	Benetti B.Neos
DELIVERY AT THE SHIPYARD	2028
LENGTH	40.63 m
WATERLINE LENGTH	N/A
HULL CONFIGURATION	DISPLACEMENT
BEAM	8.66 m
RANGE	2600
DRAFT	1.86 m
GROSS TONNAGE	296 GT
YACHT CLASS	CE
CABINS	5+4
MASTER CABIN	UPPER DECK
GUESTS	10
BERTHS	10+7
CREW	7
HEADS	6+4

EXTERIOR DESIGN	MMYD
INTERIOR DESIGN	FM ARCHITETTURA
HULL	GRP
SUPERSTRUCTURE	GRP
ENGINES	2 x MAN V8 800
TYPE OF DRIVE	HYBRID
ENGINE HOURS	N/A
MAXIMUM SPEED	15 kn
CRUSING SPEED	14 kn
FUEL CONSUMPTION AT ECONOMICAL SPEED	N/A
FUEL	N/A
GREY WATER	N/A
BLACK WATER	N/A
FRESH WATER	N/A
DISPLACEMENT	N/A

[see more information about M/Y B.Neos at www.nauyachts.com](http://www.nauyachts.com)



EXTERIOR BENETTI B.NEOS 40M

M/Y B.NEOS



EXTERIOR BENETTI B.NEOS 40M

M/Y B.NEOS



EXTERIOR BENETTI B.NEOS 40M

M/Y B.NEOS



AFT MAIN DECK LOUNGE AREA

M/Y B.NEOS



AFT MAIN DECK LOUNGE AREA

M/Y B.NEOS



SUNDECK LOUNGE AREA

M/Y B.NEOS



MAIN SALON LOUNGE AREA

M/Y B.NEOS



MAIN SALON DINING AREA

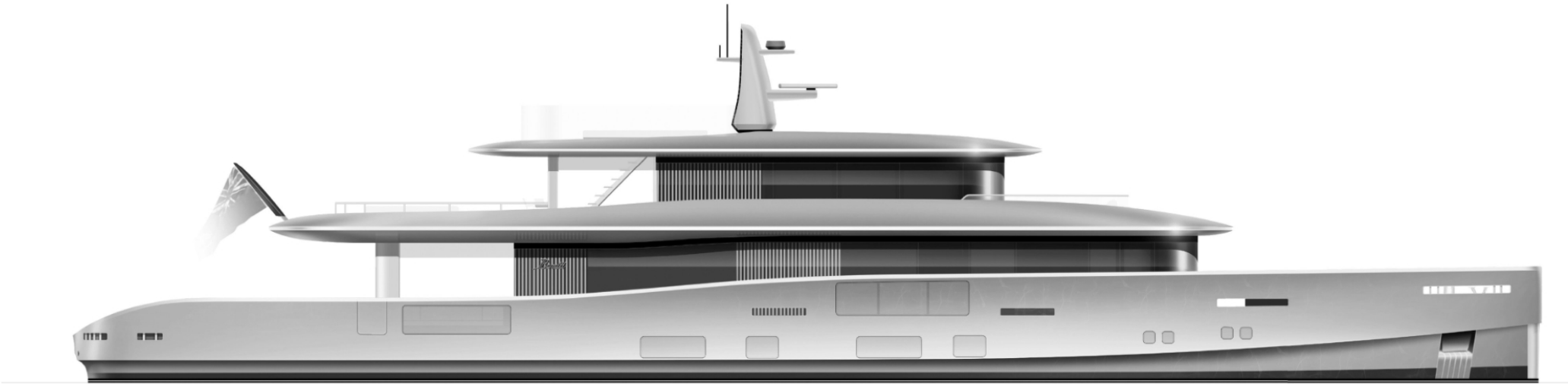
M/Y B.NEOS



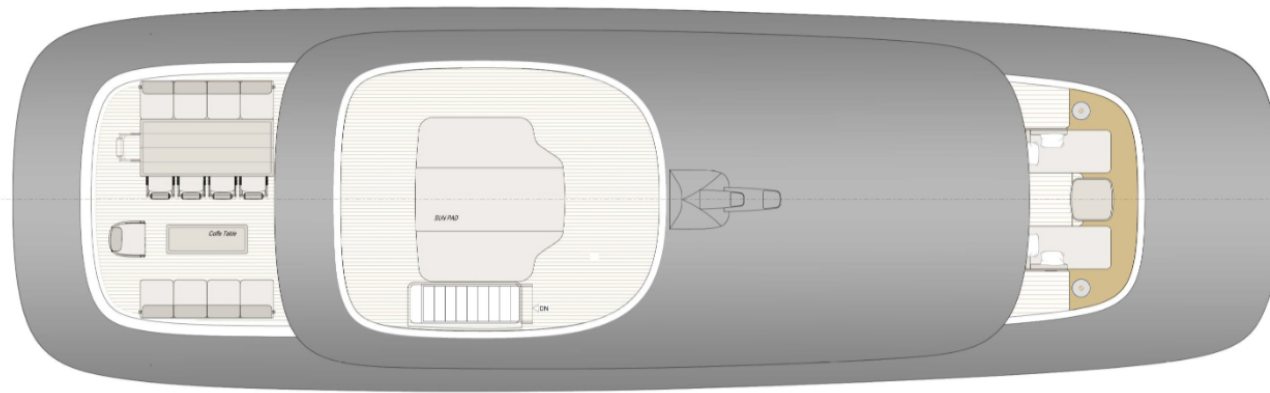
VIP CABIN

M/Y B.NEOS

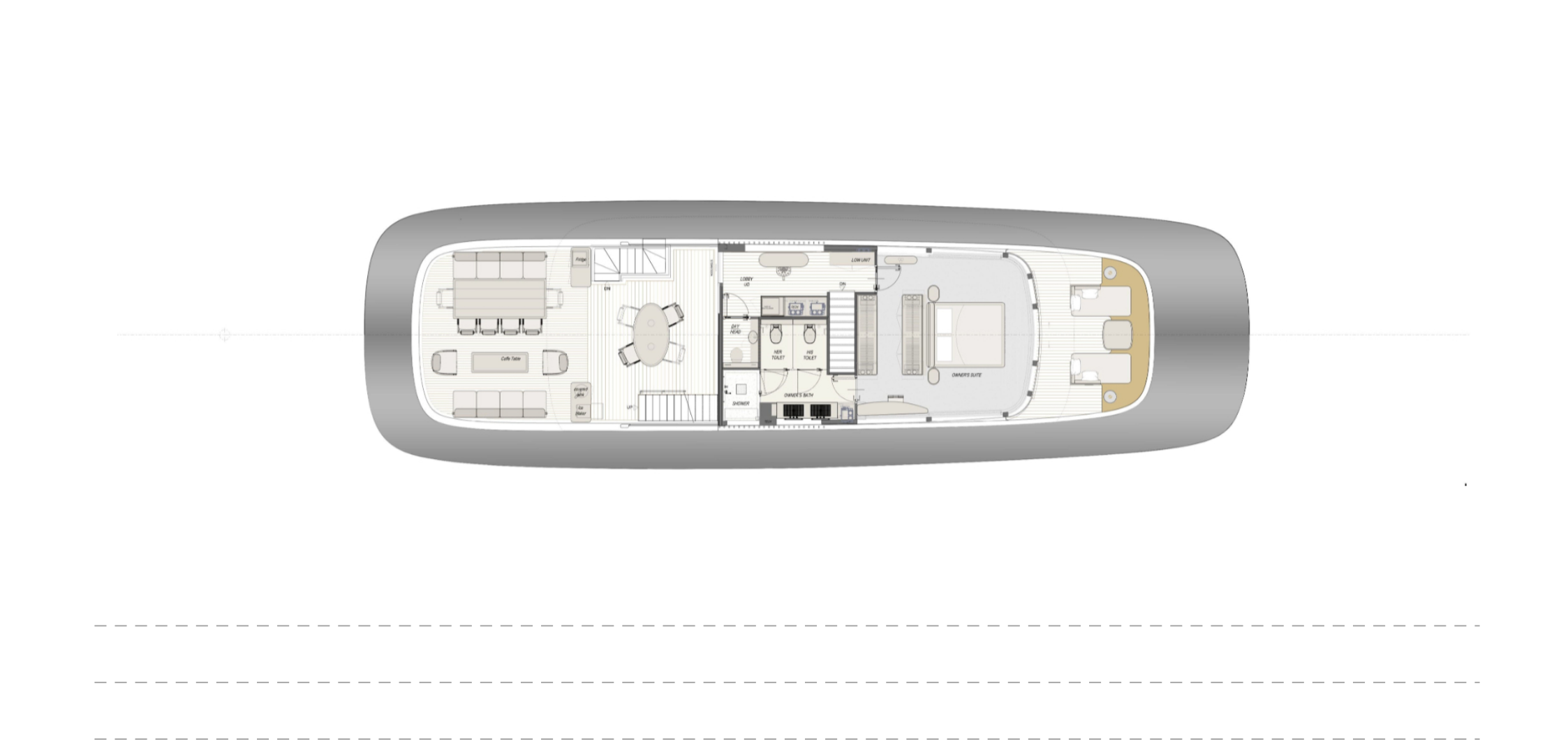
General Arrangement

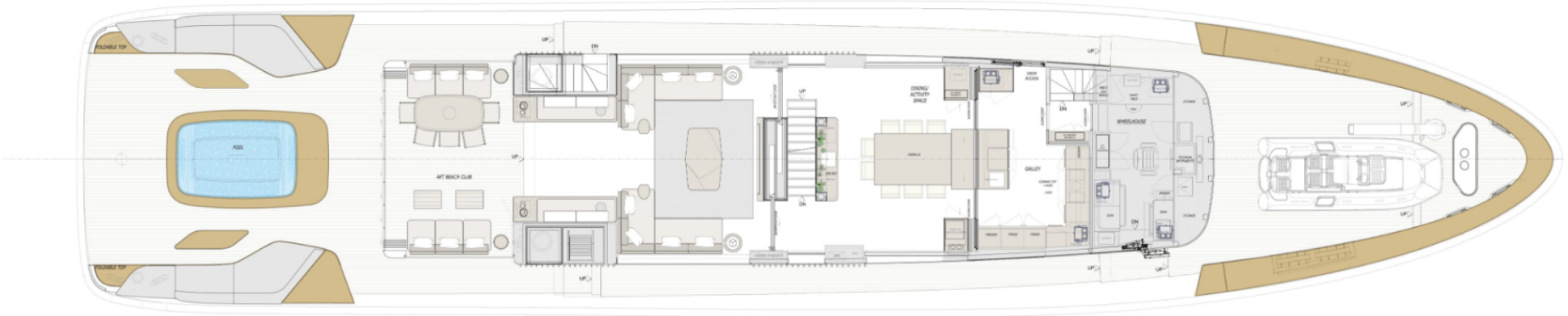


PROFILE

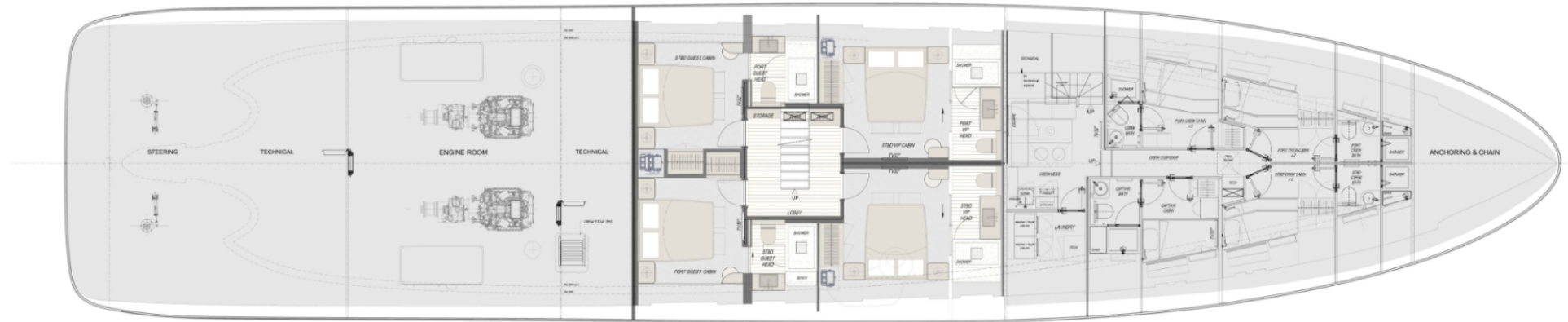


SUNDECK





MAIN DECK



LOWER DECK



KIRILL KUATOV

+377 607 93 15 20

+39 333 576 44 44

 [Send e-mail](#)

 WhatsApp

 Telegram