



New Build

NAU
YACHTS

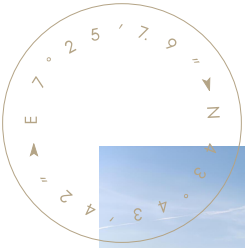
BGX63

MOTOR YACHT BLUEGAME 20M 2027

FLAG -

MOTOR YACHT

BGX63



The **BGX63** is a 20-meter motor yacht that combines space comparable to larger yachts with exceptional comfort. The yacht creates a seamless transition between the interior and exterior, offering a unique onboard experience.

With a width of 5.30 meters and a draft of 1.42 meters, the **BGX63** offers excellent stability and maneuverability, ensuring comfort both at high speeds and while docked. It is powered by two Volvo Penta IPS 1050 D13 engines (800 hp each), with the option to upgrade to two Volvo Penta IPS 1200 D13 engines (900 hp each). This allows the yacht to reach a top speed of 30 knots and cruise comfortably at 26 knots. Designed by Luca Santella with a hull by Louis T. Codega, the yacht is perfectly suited for single-handed operation, making it an excellent choice for experienced sailors.

The **BGX63** is available in three interior configurations: a three-cabin version and a two-cabin version, each maximizing space. The yacht can accommodate up to 14 passengers on day trips and includes four sleeping berths as standard, with the option to upgrade to six sleeping berths for guests, along with an additional crew cabin.

[see more information about M/Y BGX63 at www.nauyachts.com](http://www.nauyachts.com)

SPECIFICATION

SHIPYARD, MODEL	Bluegame BGX63
BUILT	2027
LENGTH	20 m
WATERLINE LENGTH	17.77 m
HULL CONFIGURATION	PLANING
BEAM	5.3 m
RANGE	N/A
DRAFT	1.42 m
GROSS TONNAGE	N/A
YACHT CLASS	CE
CABINS	2
MASTER CABIN	LOWER DECK
GUESTS	4
BERTHS	4+1
CREW	1
HEADS	2+1

EXTERIOR DESIGN	LOUIS T. CODEGA
INTERIOR DESIGN	ZUCCON INTERNATIONAL PROJECT
HULL	GRP
SUPERSTRUCTURE	GRP
ENGINES	2 x Volvo Penta IPS 1050 D13 800 h.p.
TYPE OF DRIVE	VOLVO PENTA IPS
ENGINE HOURS	N/A
MAXIMUM SPEED	30 kn
CRUISING SPEED	26 kn
FUEL CONSUMPTION AT ECONOMICAL SPEED	N/A
FUEL	3000 l
GREY WATER	330 l
BLACK WATER	330 l
FRESH WATER	700 l
DISPLACEMENT	41

[see more information about M/Y BGX63 at www.nauyachts.com](http://www.nauyachts.com)



EXTERIOR BLUEGAME BGX63

M/Y BGX63



EXTERIOR BLUEGAME BGX63

M/Y BGX63



EXTERIOR BLUEGAME BGX63

M/Y BGX63



EXTERIOR BLUEGAME BGX63

M/Y BGX63



EXTERIOR BLUEGAME BGX63

M/Y BGX63



EXTERIOR BLUEGAME BGX63

M/Y BGX63



SWIMMING PLATFORM

M/Y BGX63



SWIMMING PLATFORM

M/Y BGX63



COCKPIT SEATING AREA

M/Y BGX63



BOW LOUNGE AREA

M/Y BGX63



BOW LOUNGE AREA

M/Y BGX63



LOWER DECK LOBBY

M/Y BGX63



LOWER DECK LOBBY

M/Y BGX63



LOWER DECK LOBBY

M/Y BGX63



LOWER DECK LOBBY

M/Y BGX63



MASTER CABIN

M/Y BGX63



MASTER BATHROOM

M/Y BGX63



VIP CABIN

M/Y BGX63



MAIN SALON

M/Y BGX63



MAIN SALON

M/Y BGX63



GALLEY

M/Y BGX63

General Arrangement



PROFILE



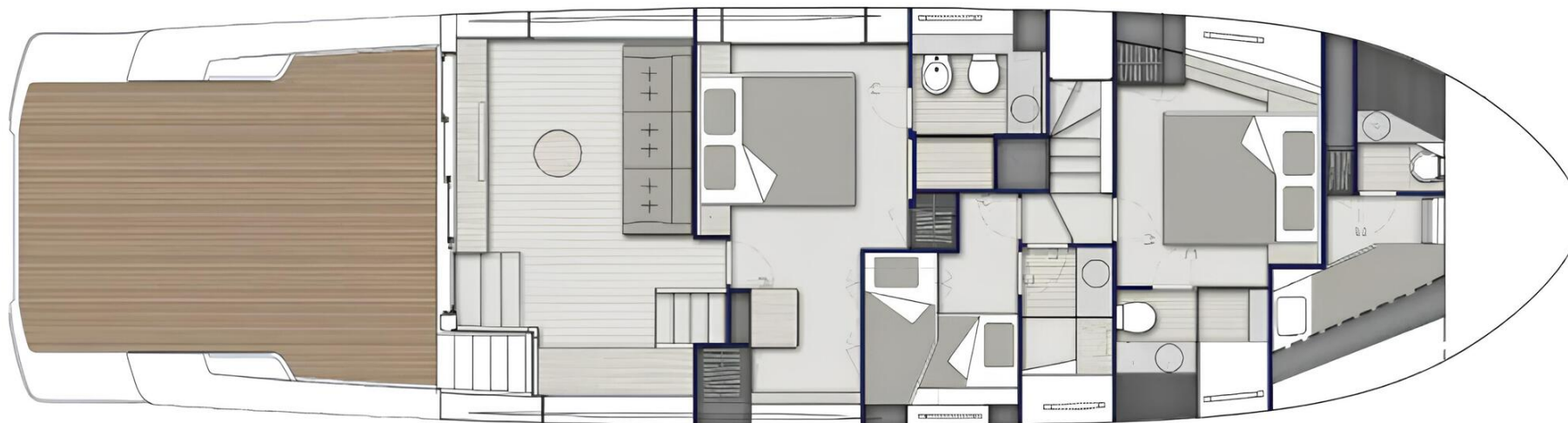
MAIN DECK



LOWER DECK V1



LOWER DECK V2



LOWER DECK V3



KIRILL KUATOV

+377 607 93 15 20

+39 333 576 44 44

 [Send e-mail](#)

 WhatsApp

 Telegram

[More information about M/Y BGX63 at www.nauyachts.com](http://www.nauyachts.com)

[Watch video](#)