



Brokerage

**NAU**  
YACHTS

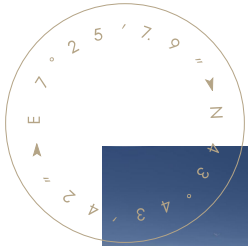
**MIRA**

MOTOR YACHT PRINCESS 30.12M 2013

**€3,950,000**  
FLAG - GEORGIA

MOTOR YACHT

## MIRA



**MIRA** is a 30-meter motor yacht built in 2013, designed by Bernard Olesinski, who was responsible for both the naval architecture and exterior styling. The interiors were developed by Princess Design Studio, creating a cohesive and balanced design throughout. The yacht features a distinctive blue hull, is registered under the Georgian flag, and complies with RINA standards.

The layout accommodates up to nine guests across four cabins. The full-beam master suite is located amidships, offering a high level of comfort. Additional accommodations include a forward VIP cabin, one double cabin, and one twin cabin with an additional Pullman berth. Crew quarters consist of three cabins for up to five crew members.

She is powered by twin MTU 16V2000 M84 engines, each producing 2,200 hp, with approximately 3,820 running hours. MIRA cruises comfortably at 18 knots, reaches a top speed of 26 knots, and offers a range of around 1,200 nautical miles. Fuel capacity is 11,000 liters, with fresh water capacity of 1,600 liters.

For enhanced comfort, the yacht is equipped with zero-speed stabilizers by ABT Trac, as well as bow and stern thrusters. Power is supplied by twin Onan 40 kW generators, while onboard systems include Dometic Cruisair air conditioning (180,000 BTU) and a Seamar watermaker with a capacity of 350 l/h (installed in 2025). Navigation equipment features systems by Furuno, a Simrad RS87, Starlink connectivity, Tracvision, and centralized onboard control systems.

The yacht carries a 4.9-meter Zodiac tender with a 70 hp outboard engine, supported by a hydraulic swim platform with a lifting capacity of up to 650 kg and a crane by Opacmare.

**MIRA** combines solid engineering, comprehensive equipment, and a well-balanced layout, offering a versatile solution for both private use and charter programs within the 30-meter segment.

[see more information about M/Y MIRA at www.nauyachts.com](http://www.nauyachts.com)

# SPECIFICATION

SHIPYARD, MODEL	Princess 98
BUILT	2013
LENGTH	30.12 m
WATERLINE LENGTH	26.64 m
HULL CONFIGURATION	PLANING
BEAM	7.01 m
RANGE	1200
DRAFT	1.83 m
GROSS TONNAGE	173 GT
YACHT CLASS	RINA
CABINS	4+3
MASTER CABIN	LOWER DECK
GUESTS	9
BERTHS	9+5
CREW	5
HEADS	4+2

EXTERIOR DESIGN	BERNARD OLESINSKI
INTERIOR DESIGN	PRINCESS YACHTS
HULL	GRP
SUPERSTRUCTURE	GRP
ENGINES	2 x MTU 16V 2200 h.p.
TYPE OF DRIVE	SHAFT LINE
ENGINE HOURS	3820 h
MAXIMUM SPEED	26 kn
CRUISING SPEED	18 kn
FUEL CONSUMPTION AT ECONOMICAL SPEED	~ 450 l/h
FUEL	11000 l
GREY WATER	750 l
BLACK WATER	500 l
FRESH WATER	1600 l
DISPLACEMENT	106

[see more information about M/Y MIRA at www.nauyachts.com](http://www.nauyachts.com)



EXTERIOR PRINCESS 98 2013 MY MIRA

M/Y MIRA



EXTERIOR PRINCESS 98 2013 MY MIRA

M/Y MIRA



EXTERIOR PRINCESS 98 2013 MY MIRA

M/Y MIRA



EXTERIOR PRINCESS 98 2013 MY MIRA

M/Y MIRA



EXTERIOR PRINCESS 98 2013 MY MIRA

M/Y MIRA



COCKPIT DINING AREA

M/Y MIRA



COCKPIT DINING AREA

M/Y MIRA



COCKPIT DINING AREA

M/Y MIRA



COCKPIT DINING AREA

M/Y MIRA



BOW LOUNGE AREA

M/Y MIRA



BOW LOUNGE AREA

M/Y MIRA



BOW LOUNGE AREA

M/Y MIRA



FLYBRIDGE DINING AREA

M/Y MIRA



FLYBRIDGE DINING AREA

M/Y MIRA



FLYBRIDGE DINING AREA

M/Y MIRA



FLYBRIDGE AFT SUNBATHING AREA

M/Y MIRA



FLYBRIDGE AFT SUNBATHING AREA

M/Y MIRA



FLYBRIDGE AFT SUNBATHING AREA

M/Y MIRA



FLYBRIDGE AFT SUNBATHING AREA

M/Y MIRA



MAIN SALON LOUNGE AREA

M/Y MIRA



MAIN SALON LOUNGE AREA

M/Y MIRA



MAIN SALON LOUNGE AREA

M/Y MIRA



MAIN SALON DINING AREA

M/Y MIRA



MAIN HELM STATION

M/Y MIRA



MASTER CABIN

M/Y MIRA



MASTER CABIN

M/Y MIRA



MASTER BATHROOM

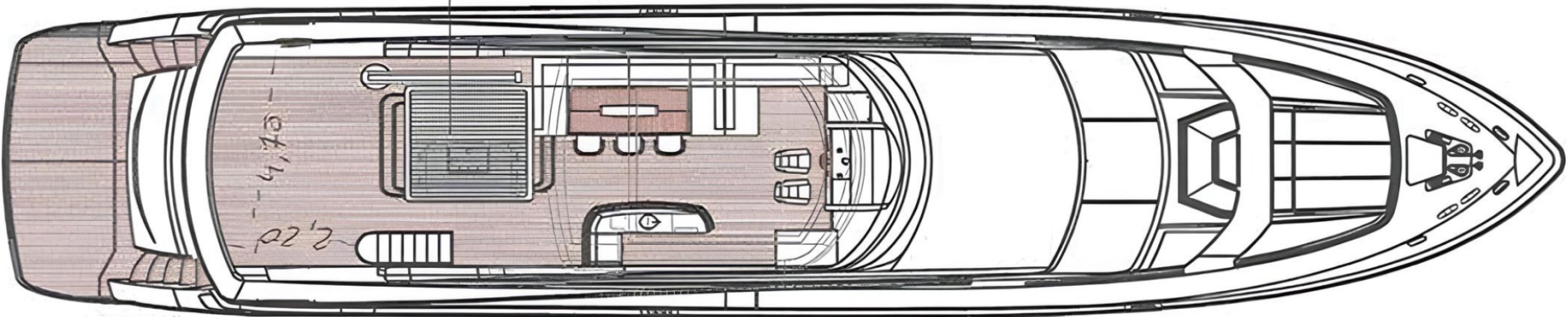
M/Y MIRA



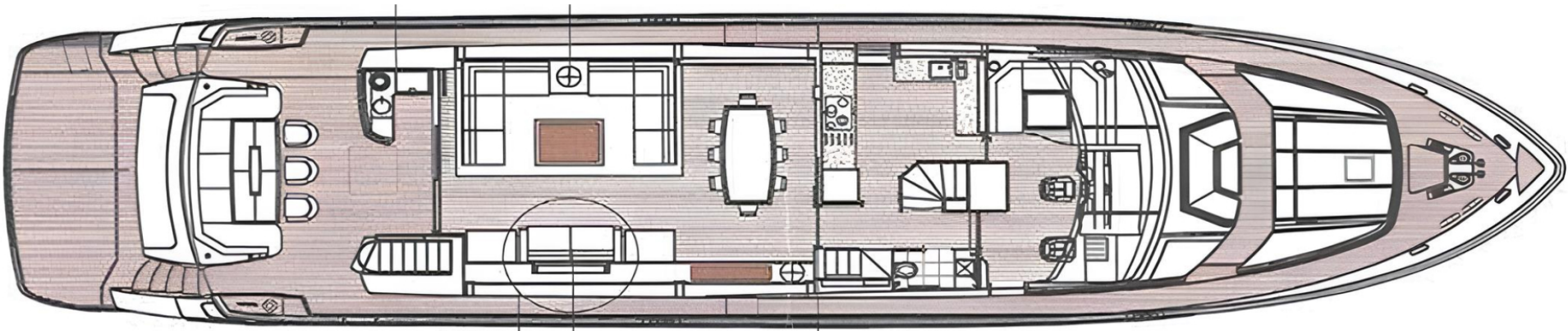
VIP CABIN

M/Y MIRA

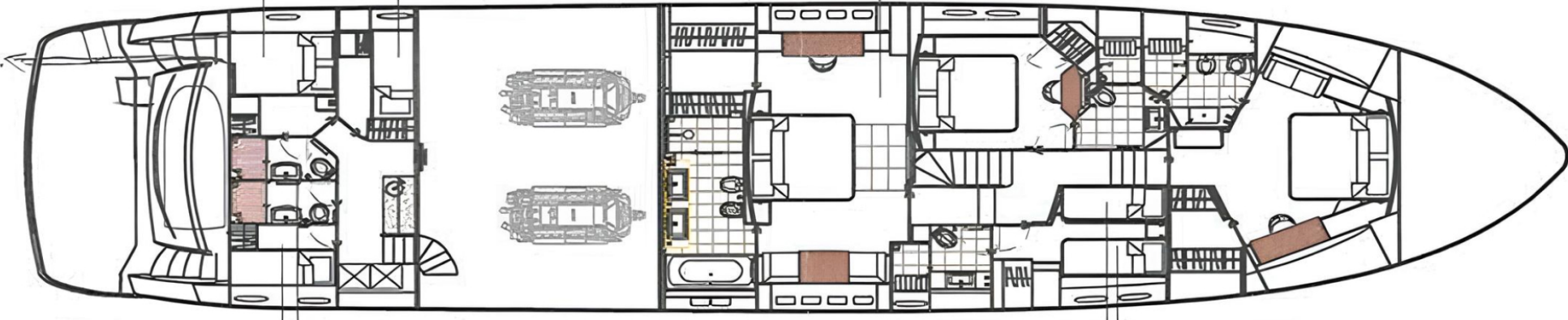
# General Arrangement



FLYBRIDGE



MAIN DECK



LOWER DECK



KIRILL KUATOV

+377 607 93 15 20

+39 333 576 44 44

[Send e-mail](#)

[WhatsApp](#)

[Telegram](#)