



Brokerage

NAU
YACHTS

SEA GYPSY

MOTOR YACHT BENETTI 28.5M 2011

€3,250,000

FLAG - CAYMAN ISLANDS

MOTOR YACHT

SEA GYPSY



SEA GYPSY is a 28.5-meter motor yacht built in 2011, combining classic Italian styling, reliable naval architecture, and a high level of autonomy. The project was developed under **Azmut Benetti S.p.A.**, with exterior design by Stefano Righini and guest interiors by Carlo Galeazzi, creating a balanced blend of aesthetics and functionality.

The hull and superstructure are constructed in GRP with a composite structure, including integrated fuel and service tanks within a double bottom. The yacht is registered under the Cayman Islands flag and complies with RINA standards, with the capability to meet MCA requirements.

The layout accommodates up to eight guests across four cabins. The master suite is located on the main deck, while the lower deck features three additional cabins, including a full-beam VIP suite with a lounge area that can serve as an alternative master. Crew quarters consist of two cabins for up to four crew members.

Maneuverability is enhanced by a 30 kW hydraulic bow thruster. Power is supplied by twin Kohler 40 kW generators, while climate control is handled by Heinen & Hopman systems. A Idromar watermaker (180 l/h) supports long-range autonomy.

Navigation systems include equipment by Simrad, Navicontrol, Nobeltec Admiral, and Sailor VHF with DSC, alongside GPS and redundant control systems.

Outdoor areas include a flybridge with a jacuzzi, an aft main deck dining area, and a foredeck lounge. The aft section features a garage for a tender up to 4.5 meters, along with a hydraulic passerelle and anchoring systems by Lofrans. Entertainment systems are based on Denon and TEAC equipment, with centralized control across interior and exterior zones.

SEA GYPSY combines a proven **Benetti** platform, thoughtful design, and strong автономность, offering a versatile solution for extended cruising and private voyages.

[see more information about M/Y SEA GYPSY at www.nauyachts.com](http://www.nauyachts.com)

SPECIFICATION

SHIPYARD, MODEL	Benetti Delfino 93'
BUILT	2011
LENGTH	28.5 m
WATERLINE LENGTH	23.91 m
HULL CONFIGURATION	DISPLACEMENT
BEAM	7.03 m
RANGE	1500
DRAFT	2.05 m
GROSS TONNAGE	152 GT
YACHT CLASS	RINA
CABINS	4+2
MASTER CABIN	MAIN DECK
GUESTS	8
BERTHS	8+4
CREW	4
HEADS	5+2

EXTERIOR DESIGN	STEFANO RIGHINI DESIGN
INTERIOR DESIGN	CARLO GALEAZZI
HULL	GRP
SUPERSTRUCTURE	GRP
ENGINES	2 x MTU 8V M72 2000 л.с.
TYPE OF DRIVE	SHAFT LINE
ENGINE HOURS	3376 h
MAXIMUM SPEED	14 kn
CRUSING SPEED	13 kn
FUEL CONSUMPTION AT ECONOMICAL SPEED	~ 350 l/h
FUEL	16000 l
GREY WATER	1100 l
BLACK WATER	1100 l
FRESH WATER	2300 l
DISPLACEMENT	135

[see more information about M/Y SEA GYPSY at www.nauyachts.com](http://www.nauyachts.com)



EXTERIOR BENETTI DELFINO 93 2011 MY SEA
GYPSY

M/Y SEA GYPSY



EXTERIOR BENETTI DELFINO 93 2011 MY SEA
GYPSY

M/Y SEA GYPSY



EXTERIOR BENETTI DELFINO 93 2011 MY SEA
GYPSY

M/Y SEA GYPSY



EXTERIOR BENETTI DELFINO 93 2011 MY SEA
GYPSY

M/Y SEA GYPSY



FLYBRIDGE JACUZZI

M/Y SEA GYPSY



FLYBRIDGE DINING AREA

M/Y SEA GYPSY



BOW LOUNGE AREA

M/Y SEA GYPSY



BOW LOUNGE AREA

M/Y SEA GYPSY



PORT SIDE

M/Y SEA GYPSY



COCKPIT SEATING AREA

M/Y SEA GYPSY



COCKPIT DINING AREA

M/Y SEA GYPSY



MAIN SALON LOUNGE AREA

M/Y SEA GYPSY



MAIN SALON DINING AREA

M/Y SEA GYPSY



MAIN HELM STATION

M/Y SEA GYPSY



MASTER CABIN

M/Y SEA GYPSY



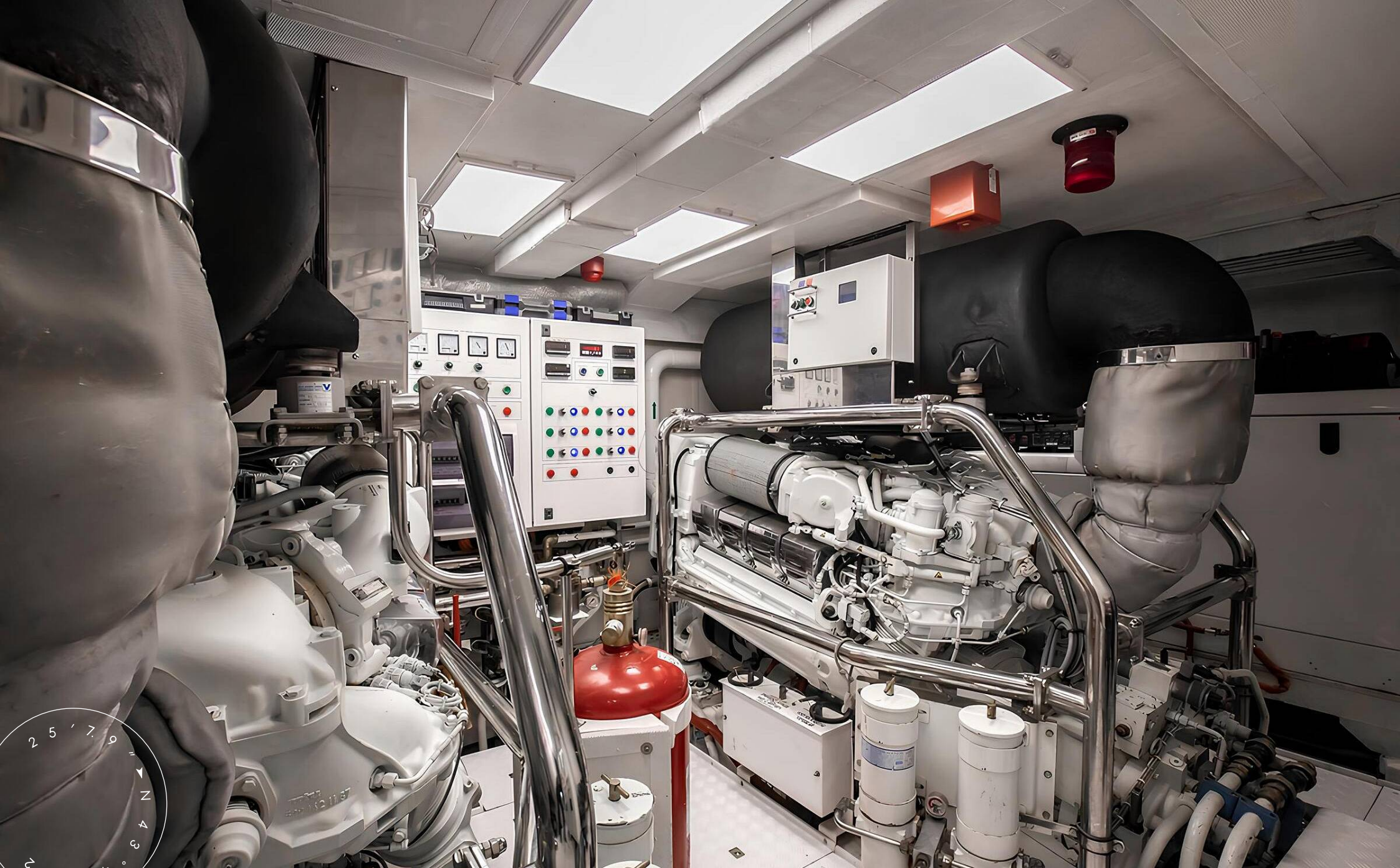
OFFICE IN THE MASTER CABIN

M/Y SEA GYPSY



VIP CABIN

M/Y SEA GYPSY



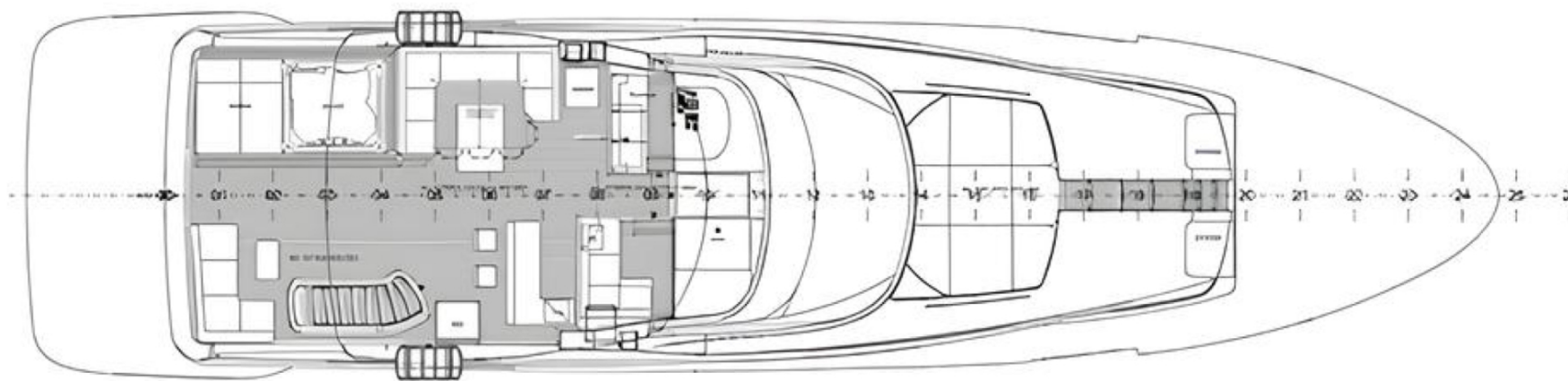
ENGINE ROOM

M/Y SEA GYPSY

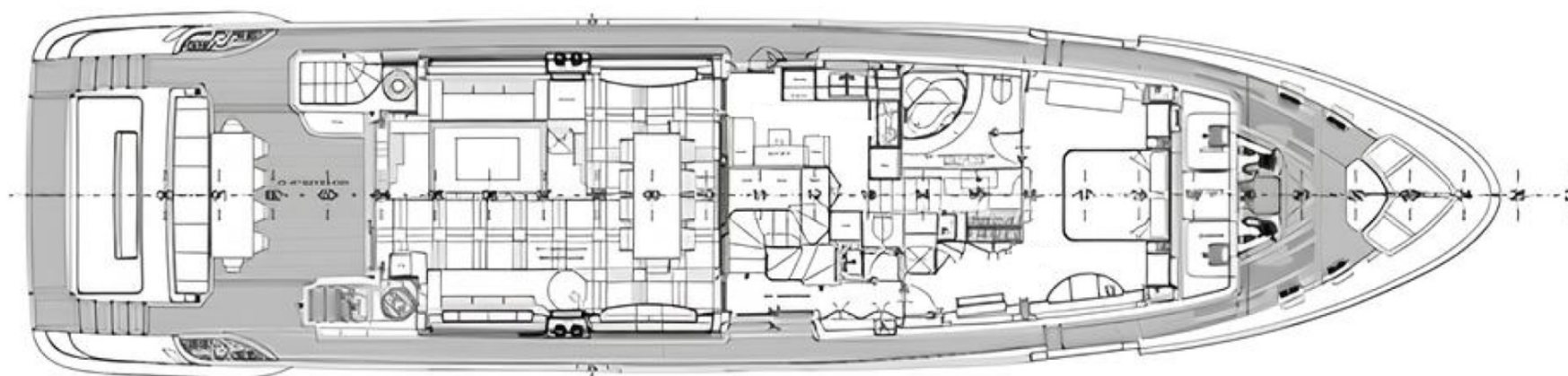
General Arrangement



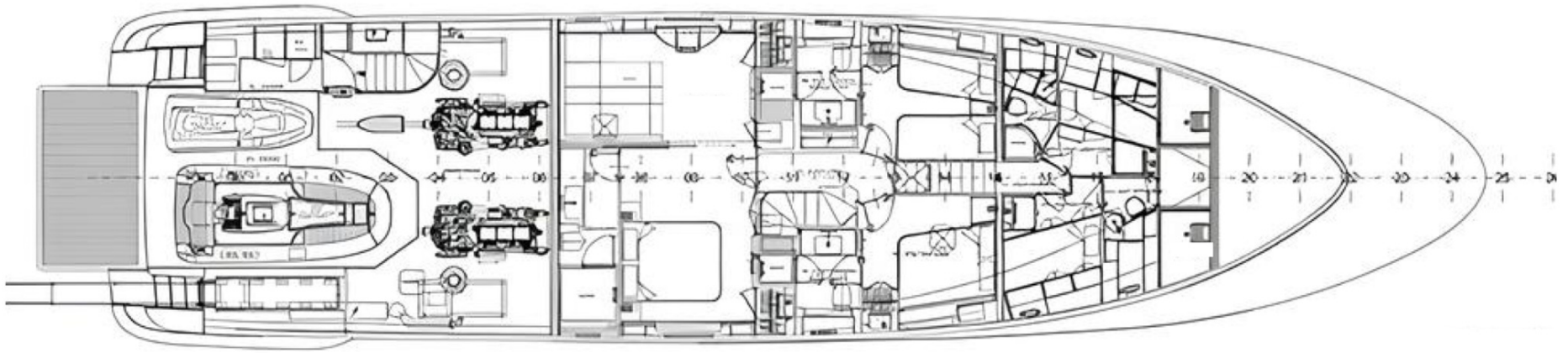
PROFILE



FLYBRIDGE



MAIN DECK



LOWER DECK



KIRILL KUATOV

+377 607 93 15 20

+39 333 576 44 44

[Send e-mail](#)

[WhatsApp](#)

[Telegram](#)