



New Build

NAU
YACHTS

FILIPPETTI F90

MOTOR YACHT FILIPPETTI YACHT 27.43M 2027

€7,185,537
FLAG -

MOTOR YACHT

FILIPPETTI F90



The **Filippetti F90**, developed by **Filippetti Yachts** in collaboration with Fulvio De Simoni, is a modern 27.5-meter flybridge yacht designed to balance performance, flexibility, and refined architecture, with extensive customization options available during construction.

The layout accommodates up to eight guests across four cabins, each with en-suite facilities, along with separate crew quarters comprising two cabins and two bathrooms. The overall arrangement emphasizes comfort and a clear separation between guest and service areas.

The interior concept is based on a seamless transition between indoor and outdoor living spaces. The main saloon, aft deck, and foredeck are visually and functionally connected, maintaining a continuous relationship with the sea. Finishes are executed using natural materials and can be fully tailored to the owner's preferences - from layout to materials and onboard equipment.

She is powered by twin MAN V12 engines, each producing 1,550 hp in the standard configuration, with an optional upgrade to 1,800 hp. This allows for a top speed of up to 28 knots (up to 30 knots in the upgraded version) and a cruising speed of approximately 24–26 knots.

Technical systems include twin 21 kW generators and a Dynamic Speed system designed to improve fuel efficiency and reduce operating costs. The hull design and engineering solutions also focus on minimizing noise and vibration levels for enhanced onboard comfort.

Exterior spaces include a flybridge, an aft dining area, and a foredeck lounge, all designed for relaxation and entertaining in an open-air environment.

The **Filippetti F90** represents a versatile and contemporary platform, offering owners the opportunity to create a highly personalized yacht while maintaining a strong balance between speed, comfort, and engineering efficiency.

[see more information about M/Y FILIPPETTI F90 at www.nauyachts.com](http://www.nauyachts.com)

SPECIFICATION

SHIPYARD, MODEL	Filippetti Yacht F90
BUILT	2027
LENGTH	27.43 m
WATERLINE LENGTH	23.96 m
HULL CONFIGURATION	PLANING
BEAM	6.38 m
RANGE	300
DRAFT	1.78 m
GROSS TONNAGE	N/A
YACHT CLASS	CE
CABINS	4+2
MASTER CABIN	MAIN DECK
GUESTS	8
BERTHS	8+2
CREW	2
HEADS	4+2

EXTERIOR DESIGN	FULVIO DE SIMONI
INTERIOR DESIGN	FILIPPETTI
HULL	GRP
SUPERSTRUCTURE	GRP
ENGINES	2 x MAN V12 1550 h.p.
TYPE OF DRIVE	SHAFT LINE
ENGINE HOURS	N/A
MAXIMUM SPEED	28 kn
CRUSING SPEED	24 kn
FUEL CONSUMPTION AT ECONOMICAL SPEED	N/A
FUEL	7000 l
GREY WATER	N/A
BLACK WATER	N/A
FRESH WATER	1300 l
DISPLACEMENT	70

[see more information about M/Y FILIPPETTI F90 at www.nauyachts.com](http://www.nauyachts.com)



EXTERIOR FILIPPETTI F90 2027

M/Y FILIPPETTI F90



EXTERIOR FILIPPETTI F90 2027

M/Y FILIPPETTI F90



EXTERIOR FILIPPETTI F90 2027

M/Y FILIPPETTI F90



EXTERIOR FILIPPETTI F90 2027

M/Y FILIPPETTI F90



EXTERIOR FILIPPETTI F90 2027

M/Y FILIPPETTI F90



FLYBRIDGE

M/Y FILIPPETTI F90



FLYBRIDGE

M/Y FILIPPETTI F90



MAIN SALON LOUNGE AREA

M/Y FILIPPETTI F90



MAIN SALON DINING AREA

M/Y FILIPPETTI F90



MASTER CABIN

M/Y FILIPPETTI F90



MASTER CABIN

M/Y FILIPPETTI F90



MASTER BATHROOM

M/Y FILIPPETTI F90



VIP CABIN

M/Y FILIPPETTI F90

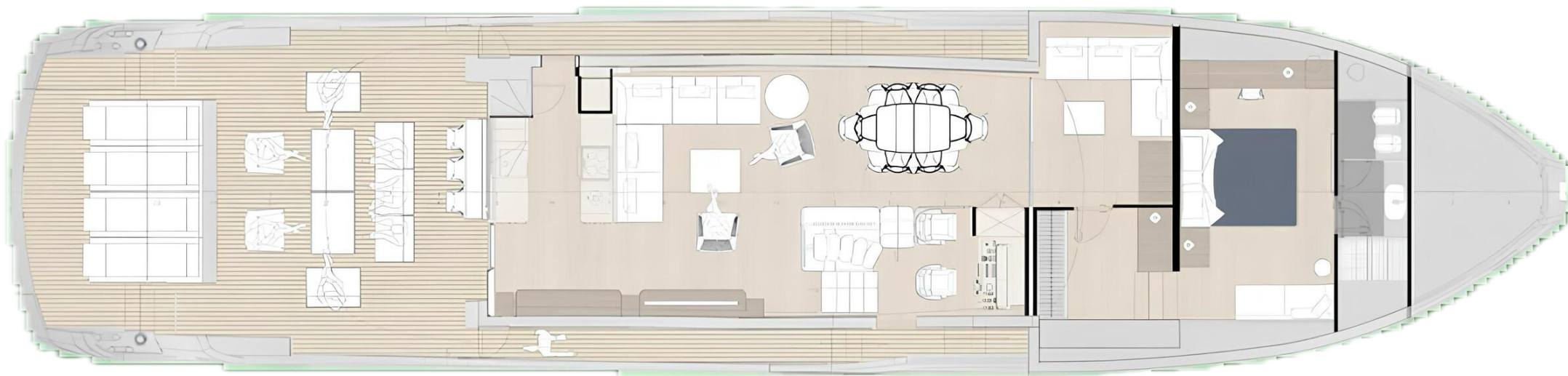
General Arrangement



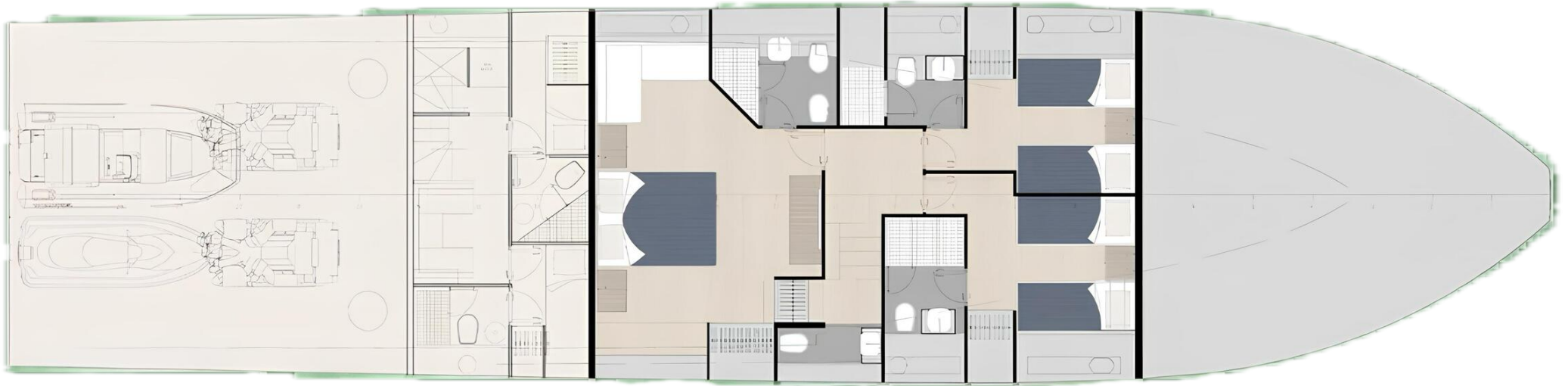
PROFILE



FLYBRIDGE



MAIN DECK



LOWER DECK



KIRILL KUATOV

+377 607 93 15 20

+39 333 576 44 44

[Send e-mail](#)

[WhatsApp](#)

[Telegram](#)