



Brokerage

**NAU**  
YACHTS

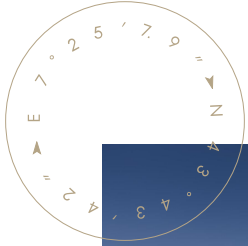
# HAPPY DOLPHIN II

MOTOR YACHT    CUSTOM BUILT 39.65M    2004

**€4,500,000**  
FLAG - ST. VINCENT

MOTOR YACHT

## HAPPY DOLPHIN II



**HAPPY DOLPHIN II** is a 39.65-metre displacement motor yacht delivered in 2004 by **Dereli Shipyard**. Designed for long-range cruising and autonomous operation, she underwent a refit in 2024, ensuring she remains in up-to-date technical and operational condition.

Constructed with a steel hull, **HAPPY DOLPHIN II** offers robust build quality and excellent stability at sea. The project was developed by R.B. Dereli, with interiors by Las Olas Design Group. With a beam of 8 metres, a draft of approximately 4.3 metres, and a gross tonnage of around 400 GT, she provides substantial internal volume.

Accommodation is arranged for up to 11 guests across five staterooms. The full-beam master suite is located on the main deck, offering a high level of privacy, while the remaining guest cabins are situated on the lower deck, all with en-suite facilities. Separate crew quarters for up to eight ensure professional service and efficient vessel operation.

Powered by twin Caterpillar 3508B diesel engines (1,100 hp each, approx. 7,700 hours), the yacht is equipped with a comprehensive technical package, including a Danfoss bow thruster, Nakashima gearboxes, and full navigation systems: Simrad radars, Furuno GPS, Sperry Marine autopilot, AIS and Navtex systems, as well as Icom and Furuno communication equipment. Safety systems include CO<sub>2</sub>, FM-200, and Flexi Fog fire suppression, along with life rafts, EPIRB, and SART.

**HAPPY DOLPHIN II** carries two tenders: a 5.5-metre Joker Boat with a Yamaha 150 hp engine and a 4.5-metre Castoldi tender, enhancing operational flexibility and shore access.

[see more information about M/Y HAPPY DOLPHIN II at www.nauyachts.com](http://www.nauyachts.com)

# SPECIFICATION

SHIPYARD, MODEL	Custom Built 40M
BUILT	2004
LENGTH	39.65 m
WATERLINE LENGTH	34.21 m
HULL CONFIGURATION	DISPLACEMENT
BEAM	8 m
RANGE	5500
DRAFT	4.3 m
GROSS TONNAGE	397 GT
YACHT CLASS	RINA
CABINS	5+4
MASTER CABIN	MAIN DECK
GUESTS	11
BERTHS	11+8
CREW	8
HEADS	7+4

EXTERIOR DESIGN	R.B DERELI
INTERIOR DESIGN	LAS OLAS DESIGN GROUP
HULL	STEEL
SUPERSTRUCTURE	ALUMINIUM
ENGINES	2 x Caterpillar 3508B 1100 h.p.
TYPE OF DRIVE	SHAFT LINE
ENGINE HOURS	7700 h
MAXIMUM SPEED	12.3 kn
CRUSING SPEED	10 kn
FUEL CONSUMPTION AT ECONOMICAL SPEED	~ 300 l/h
FUEL	63000 l
GREY WATER	N/A
BLACK WATER	N/A
FRESH WATER	10000 l
DISPLACEMENT	380

[see more information about M/Y HAPPY DOLPHIN II at www.nauyachts.com](http://www.nauyachts.com)





EXTERIOR 2004 MY HAPPY DOLPHIN II

M/Y HAPPY DOLPHIN II

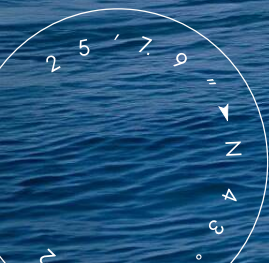




EXTERIOR 2004 MY HAPPY DOLPHIN II

M/Y HAPPY DOLPHIN II





EXTERIOR 2004 MY HAPPY DOLPHIN II

M/Y HAPPY DOLPHIN II





EXTERIOR 2004 MY HAPPY DOLPHIN II

M/Y HAPPY DOLPHIN II





SUNDECK LOUNGE AREA

M/Y HAPPY DOLPHIN II



SUNDECK LOUNGE AREA

M/Y HAPPY DOLPHIN II





SUNDECK DINING AREA

M/Y HAPPY DOLPHIN II





AFT UPPER DECK LOUNGE AREA

M/Y HAPPY DOLPHIN II





AFT MAIN DECK DINING AREA

M/Y HAPPY DOLPHIN II





AFT MAIN DECK DINING AREA

M/Y HAPPY DOLPHIN II





SWIMMING PLATFORM

M/Y HAPPY DOLPHIN II





UPPER DECK SALOON

M/Y HAPPY DOLPHIN II





MAIN HELM STATION

M/Y HAPPY DOLPHIN II





MAIN SALON DINING AREA

M/Y HAPPY DOLPHIN II





MAIN SALON LOUNGE AREA

M/Y HAPPY DOLPHIN II





MAIN SALON LOUNGE AREA

M/Y HAPPY DOLPHIN II





MAIN SALON LOUNGE AREA

M/Y HAPPY DOLPHIN II





MASTER CABIN

M/Y HAPPY DOLPHIN II





MASTER CABIN

M/Y HAPPY DOLPHIN II

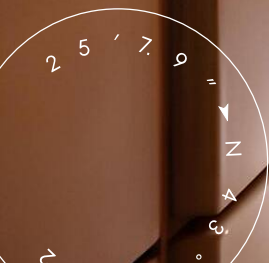




MASTER BATHROOM

M/Y HAPPY DOLPHIN II





STAIRS FROM MD TO LD

M/Y HAPPY DOLPHIN II





VIP CABIN

M/Y HAPPY DOLPHIN II

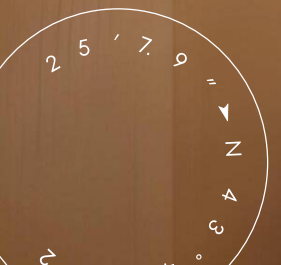




VIP CABIN

M/Y HAPPY DOLPHIN II





VIP BATHROOM

M/Y HAPPY DOLPHIN II





GUEST CABIN

M/Y HAPPY DOLPHIN II





GUEST CABIN

M/Y HAPPY DOLPHIN II





GUEST BATHROOM

M/Y HAPPY DOLPHIN II





VIP CABIN

M/Y HAPPY DOLPHIN II





GUEST CABIN

M/Y HAPPY DOLPHIN II





GUEST CABIN

M/Y HAPPY DOLPHIN II





GALLEY

M/Y HAPPY DOLPHIN II





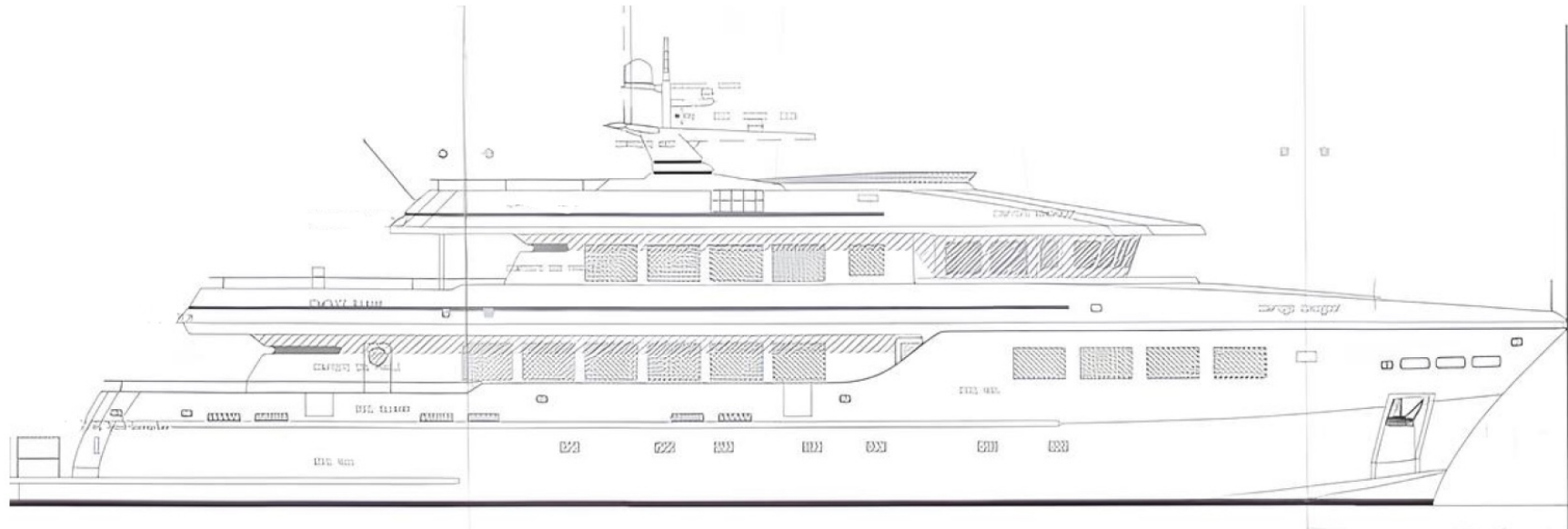
ENGINE ROOM

M/Y HAPPY DOLPHIN II



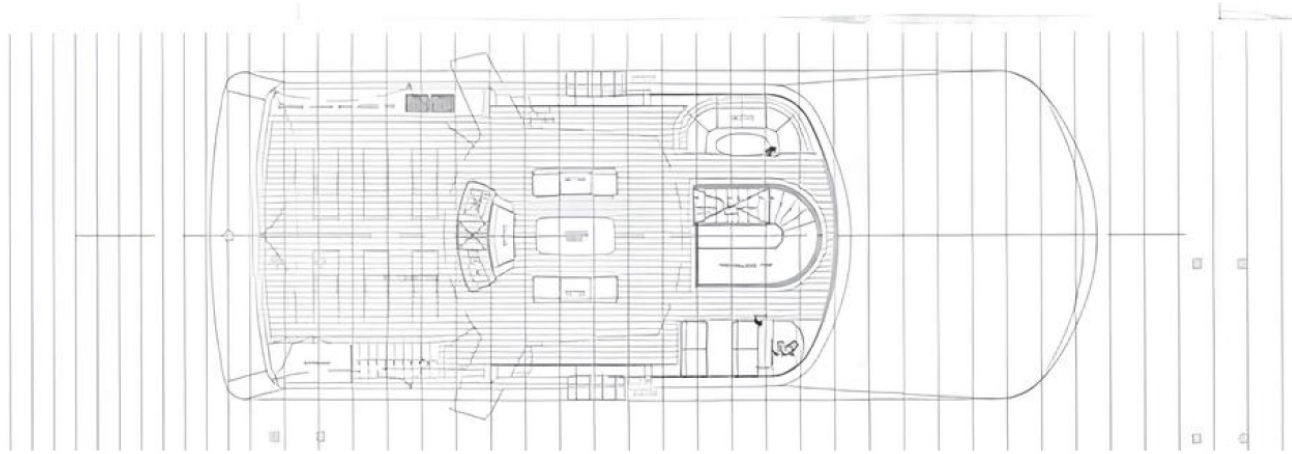
# General Arrangement





PROFILE





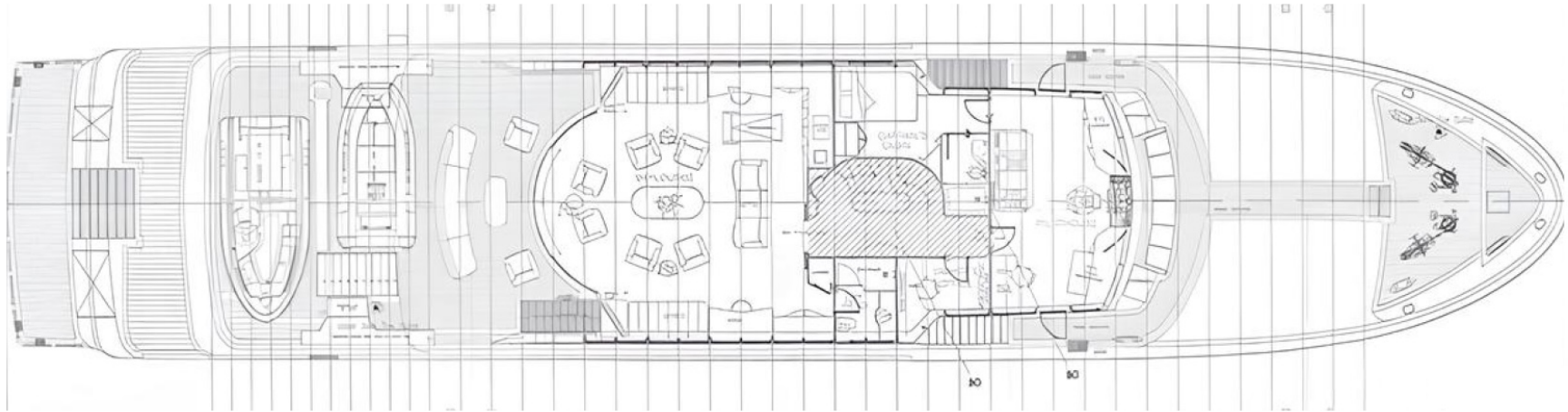
---

---

---

## SUNDECK



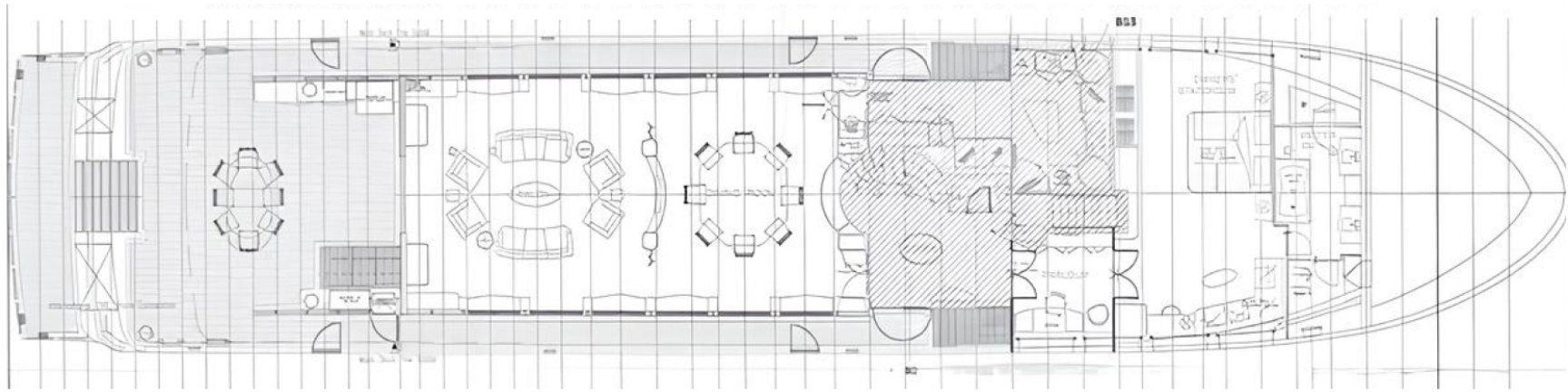


---

---

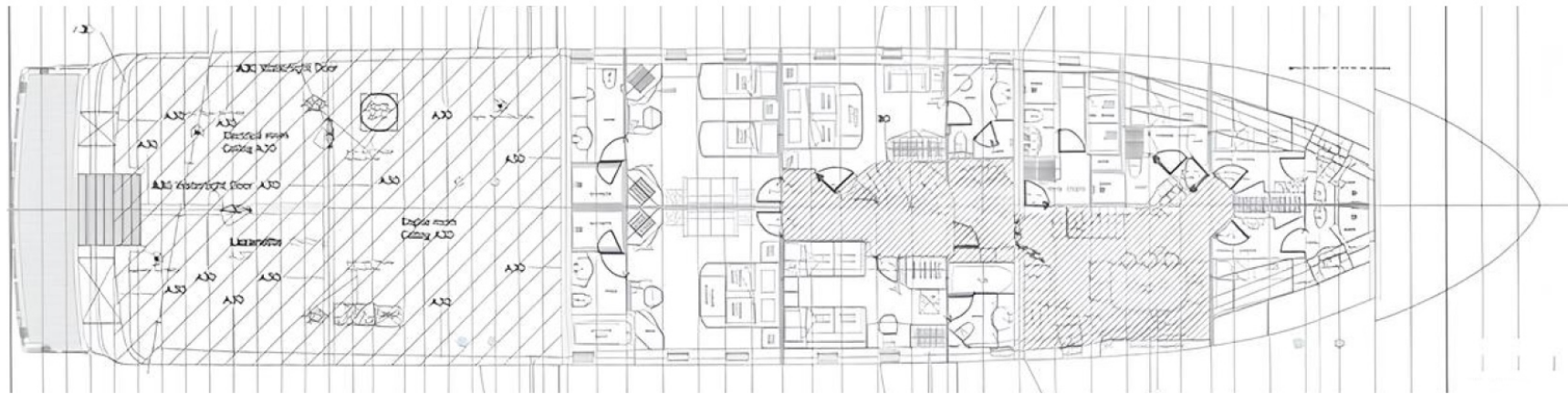
---

## UPPER DECK



MAIN DECK





---

---

---

## LOWER DECK



KIRILL KUATOV

+377 607 93 15 20

+39 333 576 44 44

[Send e-mail](#)

[WhatsApp](#)

[Telegram](#)