



Brokerage

NAU
YACHTS

GIADA

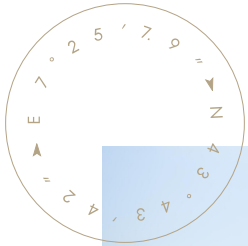
MOTOR YACHT CUSTOM LINE 26.22M 2012

€2,600,000

FLAG - CAYMAN ISLANDS

MOTOR YACHT

GIADA



GIADA is a 26.22-metre motor yacht from the **Navetta 26 Crescendo** series, delivered in 2012 by **Custom Line**. She is one of only eight units built, offering a well-proven displacement platform designed for comfort and extended cruising.

Accommodation is arranged for up to 10 guests across four staterooms. The full-beam master suite is located on the main deck, while the lower deck features two double cabins and two twin cabins with additional Pullman berths. An additional cabin is currently configured as a cinema room but can be converted into a fifth ensuite guest cabin if required. Crew quarters for four are arranged in two cabins with separate access, ensuring discreet service.

The main saloon benefits from enlarged panoramic windows, creating a bright and inviting space with a lounge area and the option to accommodate a grand piano. Direct access leads to the aft deck, which is arranged for al fresco dining. The flybridge features a lounge area with a bar and modular furniture, while the foredeck offers sunbathing areas. A swim platform provides easy access to the water.

GIADA is equipped with twin Kohler generators (28 kW each), a Dometic air conditioning system, a Hydromar watermaker, a bow thruster, ABT-TRAC stabilizers, and a Seakeeper gyroscopic stabilization system.

The yacht comes with an Extender EXT 460 tender powered by a Honda 40 hp outboard engine, as well as kayaks for additional leisure options.

Combining displacement efficiency, a functional layout, and reliable technical systems, **GIADA** offers a balanced platform suitable for both private use and charter operations.

[see more information about M/Y GIADA at www.nauyachts.com](http://www.nauyachts.com)

SPECIFICATION

SHIPYARD, MODEL	Custom Line Navetta 26 Crescendo
BUILT	2012
LENGTH	26.22 m
WATERLINE LENGTH	23.8 m
HULL CONFIGURATION	DISPLACEMENT
BEAM	6.33 m
RANGE	1500
DRAFT	2.2 m
GROSS TONNAGE	123 GT
YACHT CLASS	RINA
CABINS	5+2
MASTER CABIN	MAIN DECK
GUESTS	10
BERTHS	10+4
CREW	4
HEADS	6+2

EXTERIOR DESIGN	ZUCCON INTERNATIONAL PROJECT
INTERIOR DESIGN	ZUCCON INTERNATIONAL PROJECT
HULL	GRP
SUPERSTRUCTURE	GRP
ENGINES	2 x MAN V10 1100 h.p.
TYPE OF DRIVE	SHAFT LINE
ENGINE HOURS	3000 h
MAXIMUM SPEED	16 kn
CRUSING SPEED	13 kn
FUEL CONSUMPTION AT ECONOMICAL SPEED	~ 120 l/h
FUEL	12400 l
GREY WATER	330 l
BLACK WATER	330 l
FRESH WATER	2000 l
DISPLACEMENT	99

[see more information about M/Y GIADA at www.nauyachts.com](http://www.nauyachts.com)



EXTERIOR CUSTOM LINE NAVETTA 26
CRESCENDO 2012 MY GIADA

M/Y GIADA



EXTERIOR CUSTOM LINE NAVETTA 26
CRESCENDO 2012 MY GIADA

M/Y GIADA



EXTERIOR CUSTOM LINE NAVETTA 26
CRESCENDO 2012 MY GIADA

M/Y GIADA



EXTERIOR CUSTOM LINE NAVETTA 26
CRESCENDO 2012 MY GIADA

M/Y GIADA



EXTERIOR CUSTOM LINE NAVETTA 26
CRESCENDO 2012 MY GIADA

M/Y GIADA



EXTERIOR CUSTOM LINE NAVETTA 26
CRESCENDO 2012 MY GIADA

M/Y GIADA



EXTERIOR CUSTOM LINE NAVETTA 26
CRESCENDO 2012 MY GIADA

M/Y GIADA



EXTERIOR CUSTOM LINE NAVETTA 26
CRESCENDO 2012 MY GIADA

M/Y GIADA



AFT AREA

M/Y GIADA



AFT MAIN DECK LOUNGE AREA

M/Y GIADA



AFT MAIN DECK LOUNGE AREA

M/Y GIADA



FLYBRIDGE LOUNGE AREA

M/Y GIADA



FLYBRIDGE LOUNGE AREA

M/Y GIADA



FLYBRIDGE LOUNGE AREA

M/Y GIADA



FLYBRIDGE LOUNGE AREA

M/Y GIADA



BOW LOUNGE AREA

M/Y GIADA



BOW LOUNGE AREA

M/Y GIADA



BOW LOUNGE AREA

M/Y GIADA



MAIN SALON LOUNGE AREA

M/Y GIADA



MAIN SALON LOUNGE AREA

M/Y GIADA



MAIN SALON LOUNGE AREA

M/Y GIADA



MAIN SALON LOUNGE AREA

M/Y GIADA



MAIN SALON LOUNGE AREA

M/Y GIADA



MAIN SALON DINING AREA

M/Y GIADA



MASTER CABIN

M/Y GIADA



MASTER CABIN

M/Y GIADA



MASTER CABIN

M/Y GIADA



MASTER BATHROOM

M/Y GIADA



STAIRS FROM MD TO LD

M/Y GIADA



VIP CABIN

M/Y GIADA



VIP BATHROOM

M/Y GIADA



GUEST CABIN

M/Y GIADA



GUEST CABIN

M/Y GIADA



MAIN HELM STATION

M/Y GIADA



MAIN HELM STATION

M/Y GIADA



GALLEY

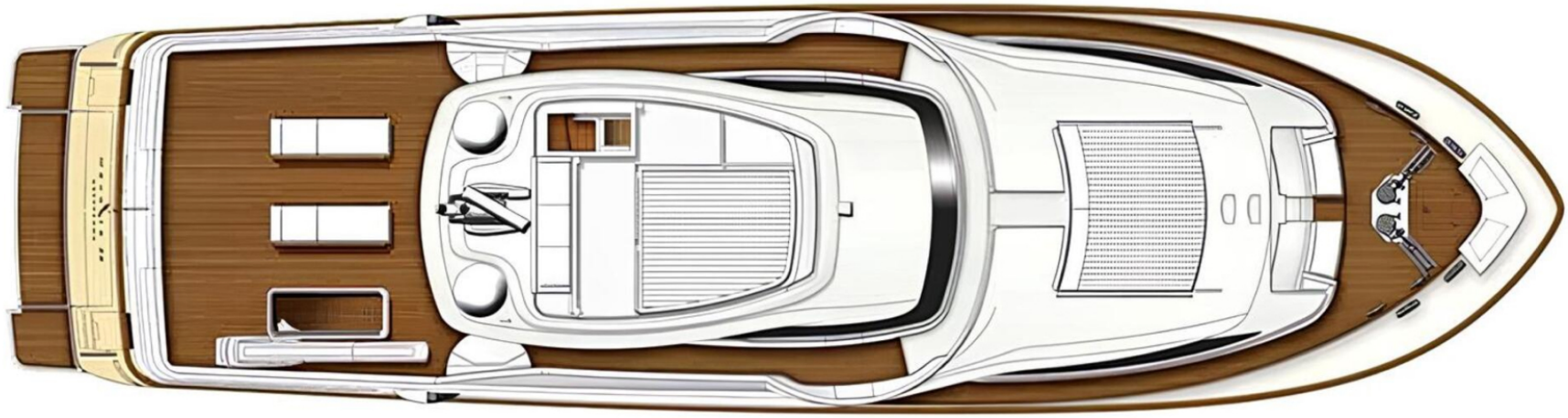
M/Y GIADA



GALLEY

M/Y GIADA

General Arrangement



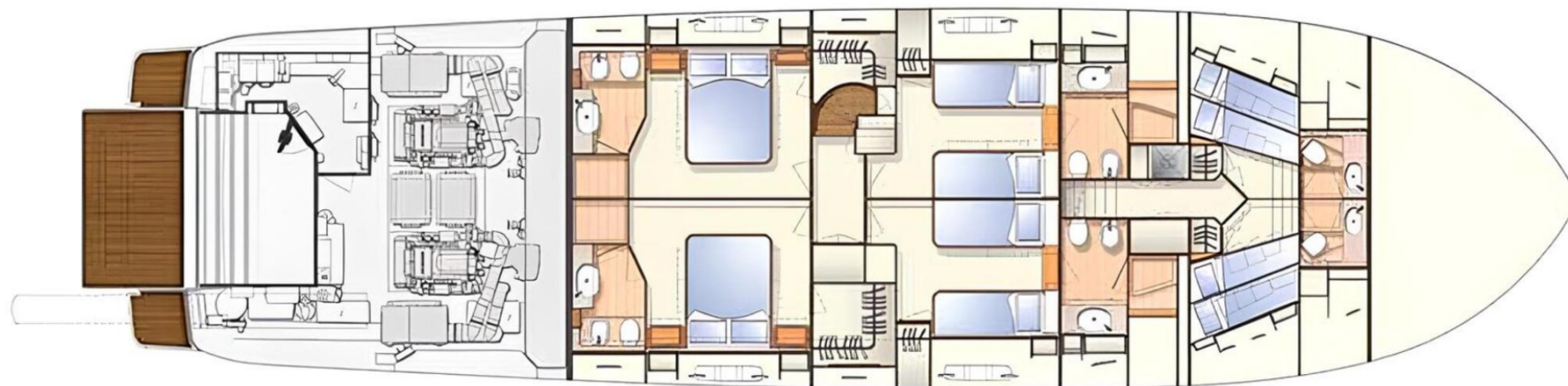
TOP VIEW



FLYBRIDGE



MAIN DECK



LOWER DECK



KIRILL KUATOV

+377 607 93 15 20

+39 333 576 44 44

[Send e-mail](#)

[WhatsApp](#)

[Telegram](#)

[More information about M/Y GIADA at www.nauyachts.com](http://www.nauyachts.com)

[Watch video](#)