



New Build

NAU
YACHTS

PROJECT HIU

MOTOR YACHT CUSTOM BUILT 40M 2027

€17,500,000
FLAG - TBD

MOTOR YACHT

PROJECT HIU



HIU is a 40-metre expedition motor yacht currently under construction at **Tufan and Brothers**, with delivery scheduled for 2027. The project has been developed in collaboration with Red Yacht Design, responsible for both exterior and interior design.

Built with a steel hull and aluminum superstructure, **HIU** follows the proven construction philosophy of explorer yachts, combining structural strength with optimized weight distribution. With a length of 40 metres, a beam of 9.63 metres, a draft of approximately 2.5 metres, and a gross tonnage of around 450 GT, she offers substantial internal volume.

Her design features clean, flowing lines and balanced proportions, with a strong emphasis on outdoor living. Teak decks and Awlgrip exterior coatings ensure durability and long-term resistance to the marine environment.

Accommodation is arranged for up to 10 guests across five staterooms, including a main-deck master suite. Four additional guest cabins are located on the lower deck, all with en-suite facilities. Crew quarters for nine are arranged across six cabins, ensuring a high level of service and operational efficiency during extended voyages. Powered by twin Caterpillar C18 diesel engines (1,000 hp each), **HIU** reaches a top speed of approximately 14 knots, with a cruising speed between 9 and 12 knots. At economical speed, her range extends to around 5,000 nautical miles, making her well suited for transatlantic crossings and long-range expedition cruising.

Exterior deck spaces are designed for versatility and active use. The aft section is configured as a beach club with direct water access and a lounge area. The upper deck provides additional relaxation spaces, while the expansive sundeck (approximately 90 sqm) features a swimming pool, bar, dining area, and multiple lounge zones.

Balanced and capable, **HIU** represents a modern expedition platform combining extended range, thoughtful design, and flexible living spaces - ideal for long-distance cruising with a focus on autonomy, comfort, and versatility.

[see more information about M/Y PROJECT HIU at www.nauyachts.com](http://www.nauyachts.com)

SPECIFICATION

SHIPYARD, MODEL	Custom Built Tufan and Brothers 40M
BUILT	2027
LENGTH	40 m
WATERLINE LENGTH	39 m
HULL CONFIGURATION	DISPLACEMENT
BEAM	9.63 m
RANGE	5000
DRAFT	2.5 m
GROSS TONNAGE	450 GT
YACHT CLASS	RINA
CABINS	5+5
MASTER CABIN	MAIN DECK
GUESTS	10
BERTHS	10+9
CREW	9
HEADS	7+5

EXTERIOR DESIGN	RED YACHT DESIGN
INTERIOR DESIGN	RED YACHT DESIGN
HULL	STEEL
SUPERSTRUCTURE	ALUMINIUM
ENGINES	2 x Caterpillar C18 1000 h.p.
TYPE OF DRIVE	SHAFT LINE
ENGINE HOURS	N/A
MAXIMUM SPEED	14 kn
CRUSING SPEED	9 kn
FUEL CONSUMPTION AT ECONOMICAL SPEED	N/A
FUEL	45000 l
GREY WATER	3000 l
BLACK WATER	2000 l
FRESH WATER	10000 l
DISPLACEMENT	345

[see more information about M/Y PROJECT HIU at www.nauyachts.com](http://www.nauyachts.com)



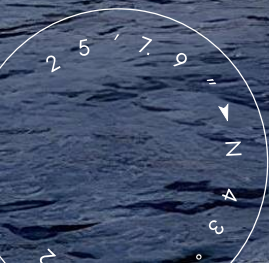
EXTERIOR TUFAN AND BROTHERS UNVEIL 40M
MY HIU

M/Y PROJECT HIU



EXTERIOR TUFAN AND BROTHERS UNVEIL 40M MY HIU

M/Y PROJECT HIU



EXTERIOR TUFAN AND BROTHERS UNVEIL 40M MY HIU

M/Y PROJECT HIU



EXTERIOR TUFAN AND BROTHERS UNVEIL 40M
MY HIU

M/Y PROJECT HIU



SUNDECK LOUNGE AREA

M/Y PROJECT HIU



SUNDECK LOUNGE AREA

M/Y PROJECT HIU



AFT UPPER DECK LOUNGE AREA

M/Y PROJECT HIU



AFT MAIN DECK DINING AREA

M/Y PROJECT HIU



AFT MAIN DECK DINING AREA

M/Y PROJECT HIU



BEACH CLUB

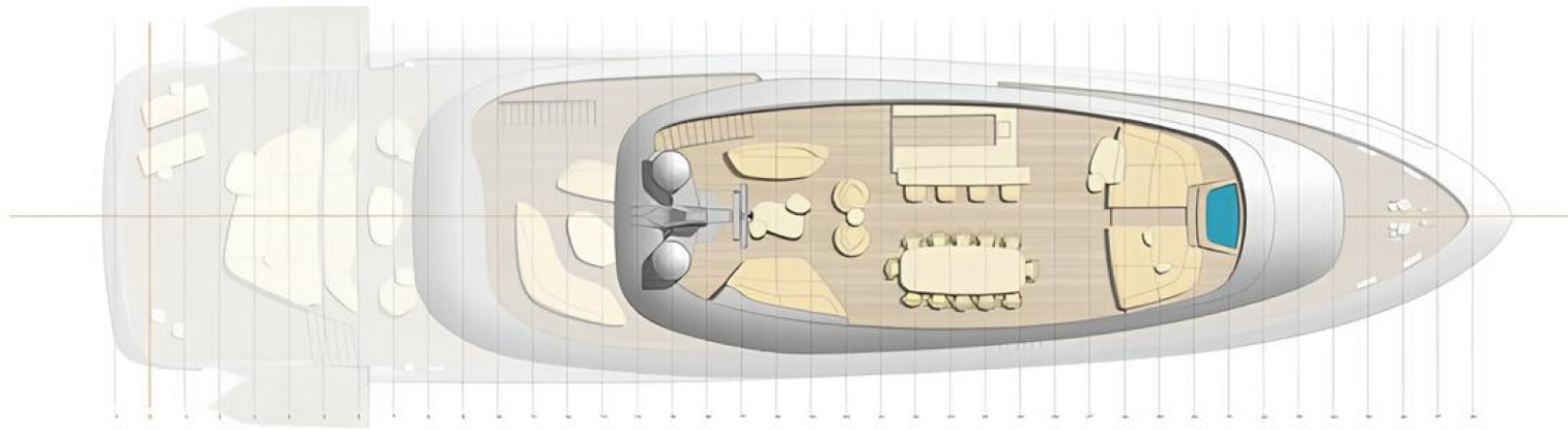
M/Y PROJECT HIU



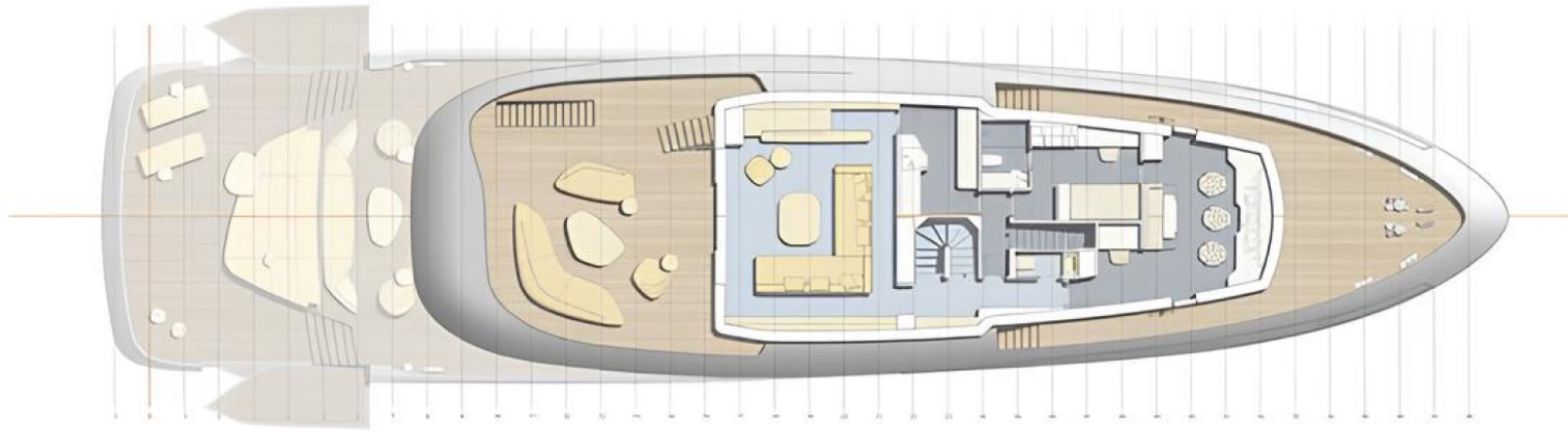
BEACH CLUB

M/Y PROJECT HIU

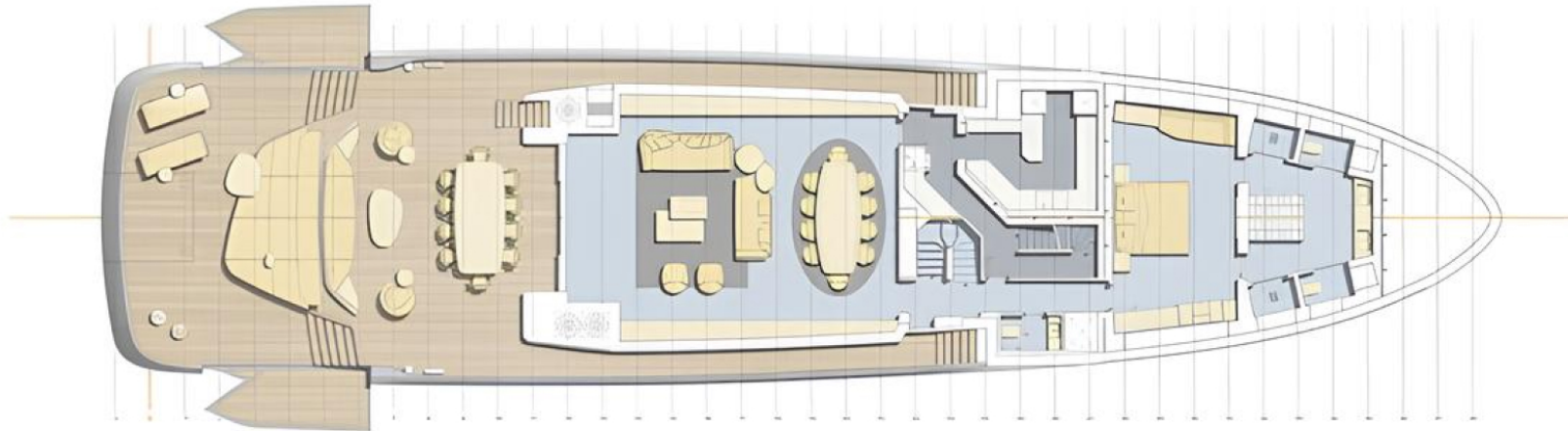
General Arrangement



SUNDECK



UPPER DECK



MAIN DECK



LOWER DECK



KIRILL KUATOV

+377 607 93 15 20

+39 333 576 44 44

[Send e-mail](#)

[WhatsApp](#)

[Telegram](#)