



Brokerage

NAU
YACHTS

DZAM

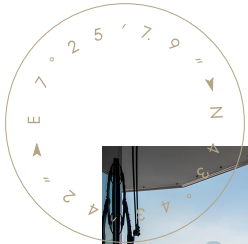
MOTOR YACHT BERING 18.3M 2012

€1,273,533

FLAG -

MOTOR YACHT

DZAM



DZAM Bering 60 is an 18.3-metre expedition motor yacht delivered in 2012 by **Bering Yachts**. Part of the shipyard's compact explorer range, she is designed for long-range autonomous cruising with a focus on durability and practicality. Constructed with a steel hull and superstructure, and featuring a full-displacement design, **Bering 60** offers exceptional strength, stability, and predictable seakeeping. She is powered by twin Cummins QSB 5.9 diesel engines (225 hp each, approx. 2,600 hours), delivering a cruising speed of around 8 knots and a top speed of up to 10 knots.

Accommodation is arranged across two staterooms, making her particularly well suited for private ownership and extended stays on board. Interior spaces are designed with functionality in mind, with the saloon integrated with the dining area and offering direct access to the exterior decks, ensuring ease of movement and a continuous connection to the surrounding environment.

Following a refit in 2021, the yacht has benefited from upgrades aimed at maintaining her technical condition and enhancing onboard comfort.

Compact yet capable, the **Bering 60** represents a robust expedition platform, combining solid steel construction, strong autonomy, and a practical layout - ideal for owners seeking independence, steady cruising, and long-term living at sea.

[see more information about M/Y DZAM at www.nauyachts.com](http://www.nauyachts.com)

SPECIFICATION

SHIPYARD, MODEL	Bering B60
BUILT	2012
LENGTH	18.3 m
WATERLINE LENGTH	17.2 m
HULL CONFIGURATION	DISPLACEMENT
BEAM	5.7 m
RANGE	3000
DRAFT	1.8 m
GROSS TONNAGE	N/A
YACHT CLASS	RINA
CABINS	2+1
MASTER CABIN	LOWER DECK
GUESTS	4
BERTHS	4+1
CREW	1
HEADS	1+1

EXTERIOR DESIGN	BERING YACHTS
INTERIOR DESIGN	BERING YACHTS
HULL	STEEL
SUPERSTRUCTURE	ALUMINIUM
ENGINES	2 x Cummins QSB 5.9 225 h.p.
TYPE OF DRIVE	SHAFT LINE
ENGINE HOURS	N/A
MAXIMUM SPEED	10 kn
CRUSING SPEED	8 kn
FUEL CONSUMPTION AT ECONOMICAL SPEED	N/A
FUEL	8700 l
GREY WATER	N/A
BLACK WATER	N/A
FRESH WATER	3800 l
DISPLACEMENT	97

[see more information about M/Y DZAM at www.nauyachts.com](http://www.nauyachts.com)



EXTERIOR BERING B60 2012 MY DZAM

M/Y DZAM



EXTERIOR BERING B60 2012 MY DZAM

M/Y DZAM



EXTERIOR BERING B60 2012 MY DZAM

M/Y DZAM



BOW LOUNGE AREA

M/Y DZAM



BOW LOUNGE AREA

M/Y DZAM



BOW LOUNGE AREA

M/Y DZAM



MAIN SALON

M/Y DZAM



MAIN SALON DINING AREA

M/Y DZAM



MAIN SALON LOUNGE AREA

M/Y DZAM



MASTER CABIN

M/Y DZAM



GUEST CABIN

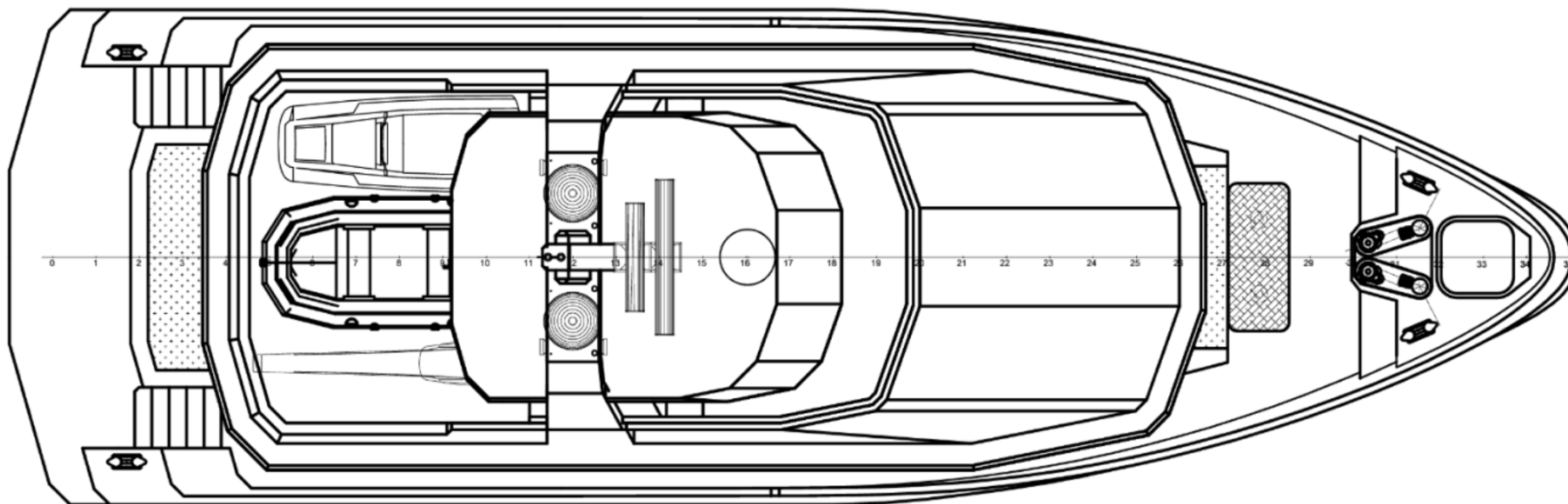
M/Y DZAM



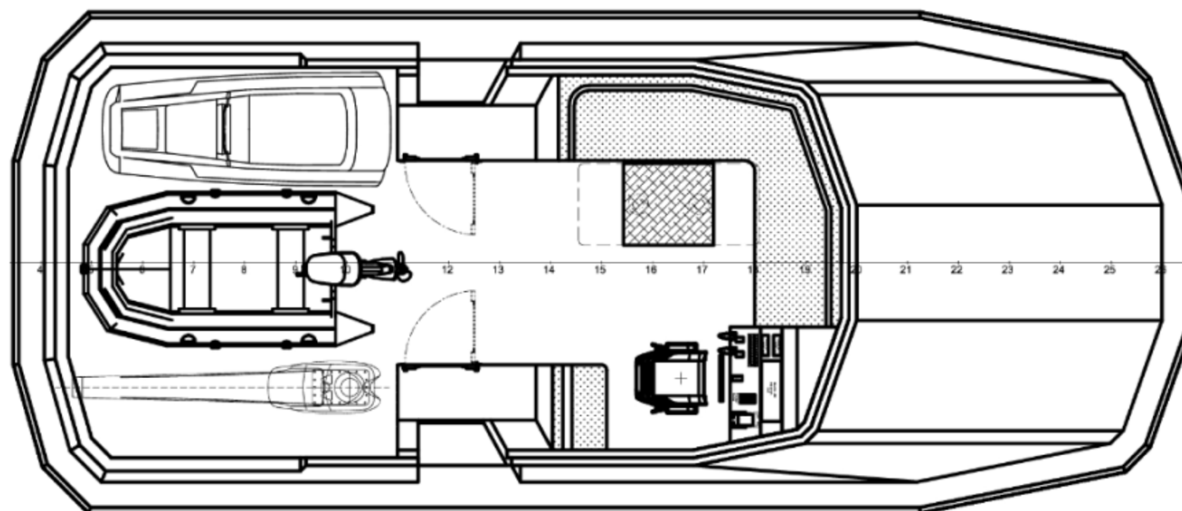
GUEST CABIN

M/Y DZAM

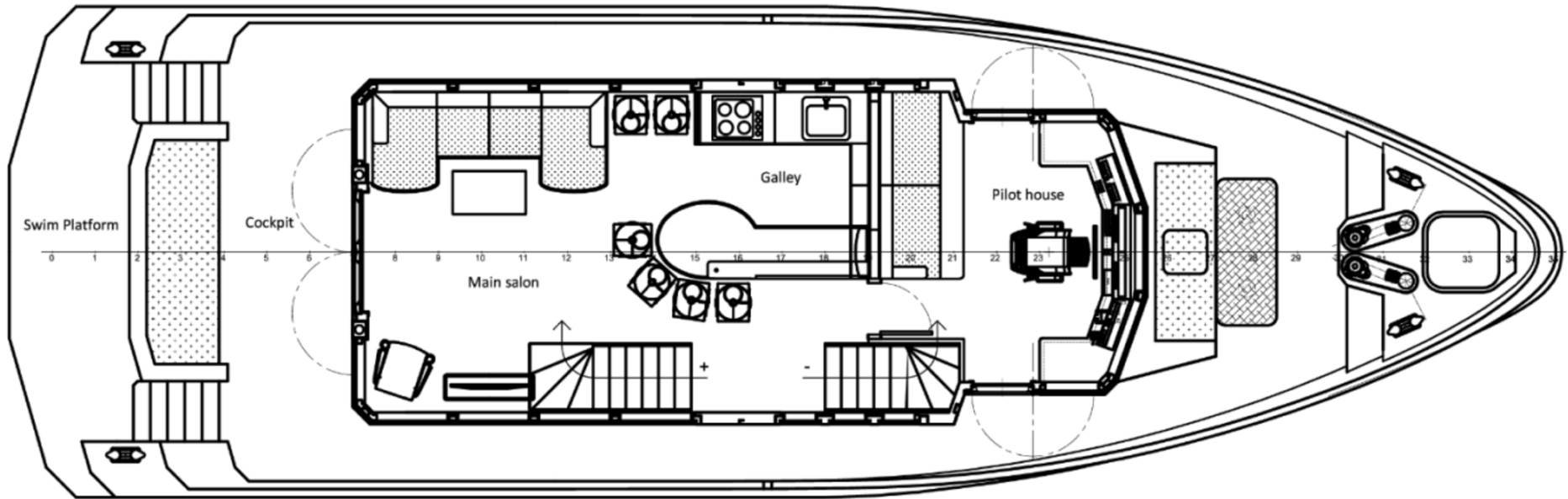
General Arrangement



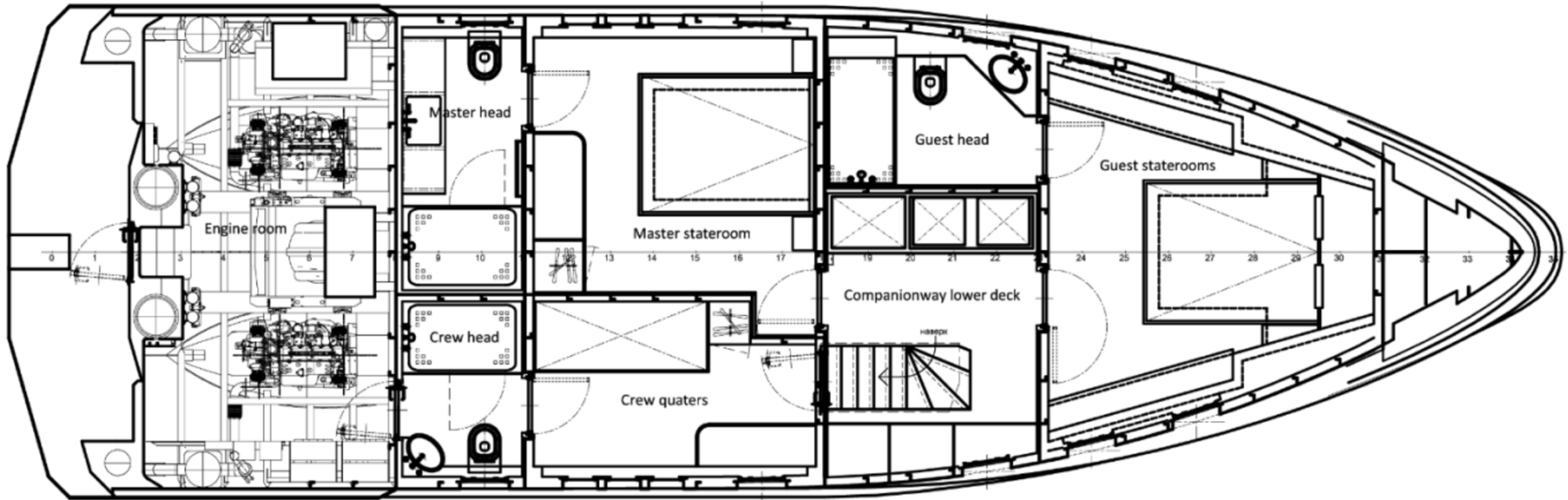
TOP VIEW



FLYBRIDGE



MAIN DECK



LOWER DECK



KIRILL KUATOV

+377 607 93 15 20

+39 333 576 44 44

[Send e-mail](#)

[WhatsApp](#)

[Telegram](#)