



Brokerage

**NAU**  
YACHTS

**INFINITY**

MOTOR YACHT    SUNSEEKER 29.78M    2010

**€3,500,000**  
FLAG -

MOTOR YACHT

# INFINITY



**INFINITY** is a 29.78-metre flybridge motor yacht delivered in 2010 by **Sunseeker**. She represents a well-proven platform combining reliable engineering, a practical layout, and balanced performance - well suited for both private cruising and charter use. Powered by twin MTU engines, **INFINITY** cruises comfortably at around 12 knots and reaches a top speed of up to 27 knots. For enhanced onboard comfort, she is equipped with Trac stabilizers, operating effectively both underway and at anchor. Accommodation is arranged for up to 10 guests across five staterooms. The layout includes a VIP cabin, two double cabins, and two twin cabins, offering flexibility for a variety of group configurations. Crew quarters are fully separate, ensuring smooth service and discreet operation.

The interior is finished in a contemporary style with a focus on practicality and natural light. The main saloon features panoramic windows and integrates lounge and dining areas into a single, functional space for everyday use. The galley is equipped with appliances from Miele, Samsung, and Vittrifrigio, supporting full onboard operation.

Exterior spaces are designed for versatile use throughout the day. The flybridge offers lounge seating and sunbathing areas, the aft deck is arranged for al fresco dining, and the swim platform provides easy access to the water while serving as the main hub for water activities.

For leisure on the water, **INFINITY** is equipped with a Williams Turbojet 505 tender, a Sea-Doo Spark jet ski, a SUP board, water skis (adult and children), a wakeboard, a towable banana, and equipment for snorkeling and fishing.

Well-rounded and practical, **INFINITY** delivers a comfortable and flexible yachting experience, combining proven performance with a layout designed for relaxed cruising.

[see more information about M/Y INFINITY at www.nauyachts.com](http://www.nauyachts.com)

# SPECIFICATION

SHIPYARD, MODEL	Sunseeker 30M
BUILT	2010
LENGTH	29.78 m
WATERLINE LENGTH	23.93 m
HULL CONFIGURATION	PLANING
BEAM	6.85 m
RANGE	1000
DRAFT	2.2 m
GROSS TONNAGE	119 GT
YACHT CLASS	RINA
CABINS	5+3
MASTER CABIN	MAIN DECK
GUESTS	10
BERTHS	10+4
CREW	4
HEADS	5+1

EXTERIOR DESIGN	SUNSEEKER
INTERIOR DESIGN	SUNSEEKER
HULL	GRP
SUPERSTRUCTURE	GRP
ENGINES	2 x MTU 2250 h.p.
TYPE OF DRIVE	SHAFT LINE
ENGINE HOURS	N/A
MAXIMUM SPEED	28 kn
CRUISING SPEED	12 kn
FUEL CONSUMPTION AT ECONOMICAL SPEED	N/A
FUEL	35961 l
GREY WATER	200 l
BLACK WATER	435 l
FRESH WATER	7570 l
DISPLACEMENT	104

[see more information about M/Y INFINITY at www.nauyachts.com](http://www.nauyachts.com)



EXTERIOR SUNSEEKER 30M 2010 MY INFINITY

M/Y INFINITY





FLYBRIDGE LOUNGE AREA

M/Y INFINITY



FLYBRIDGE LOUNGE AREA

M/Y INFINITY



FLYBRIDGE LOUNGE AREA

M/Y INFINITY



FLYBRIDGE GRILL

M/Y INFINITY



FLYBRIDGE LOUNGE AREA

M/Y INFINITY



BOW LOUNGE AREA

M/Y INFINITY



AFT AREA

M/Y INFINITY



COCKPIT DINING AREA

M/Y INFINITY



MAIN SALON LOUNGE AREA

M/Y INFINITY



MAIN SALON DINING AREA

M/Y INFINITY



MAIN SALON LOUNGE AREA

M/Y INFINITY



MAIN SALON LOUNGE AREA

M/Y INFINITY



MASTER CABIN

M/Y INFINITY



MASTER CABIN

M/Y INFINITY



MASTER CABIN

M/Y INFINITY



GUEST CABIN

M/Y INFINITY



GUEST CABIN

M/Y INFINITY



VIP CABIN

M/Y INFINITY



VIP CABIN

M/Y INFINITY



GALLEY

M/Y INFINITY



GALLEY

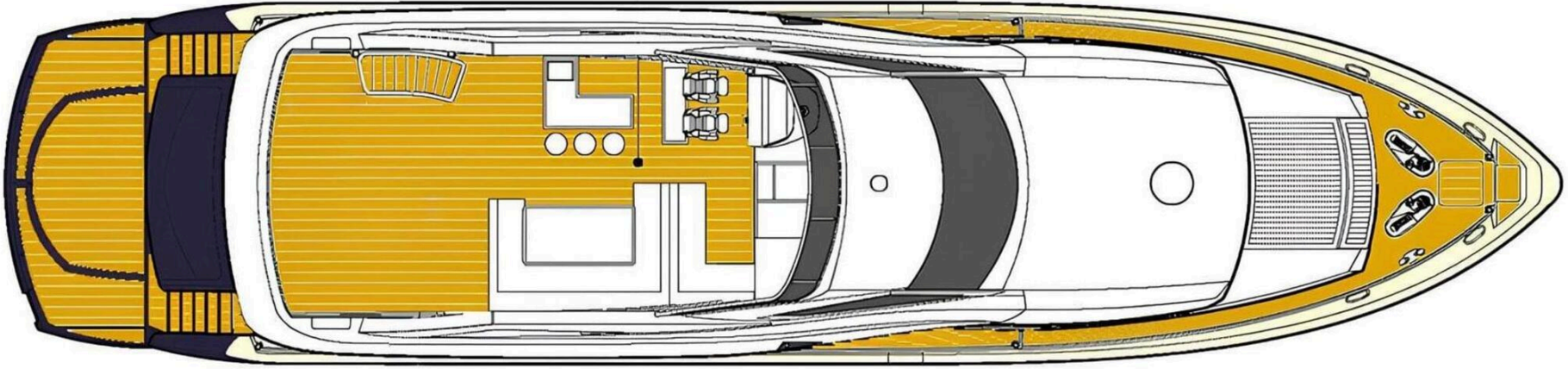
M/Y INFINITY



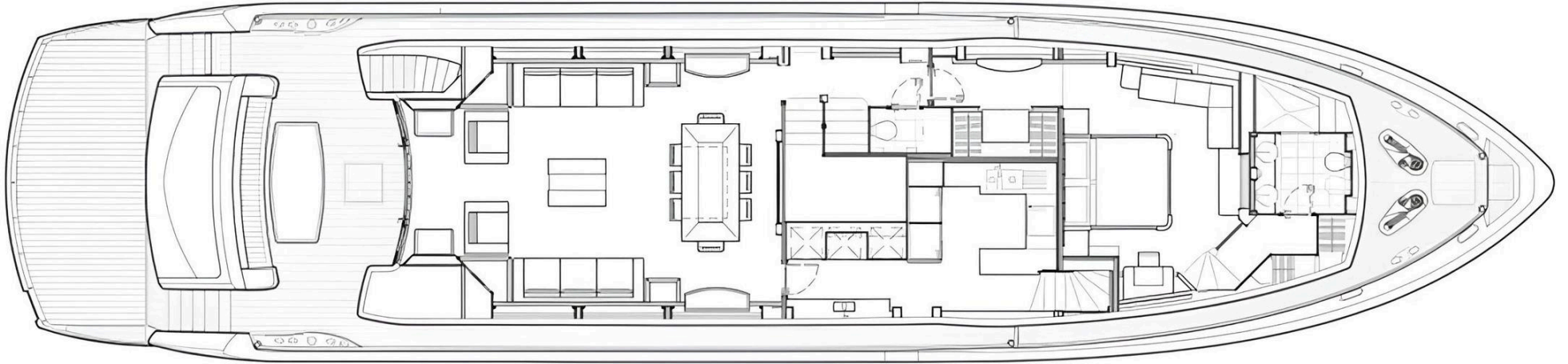
MAIN HELM STATION

M/Y INFINITY

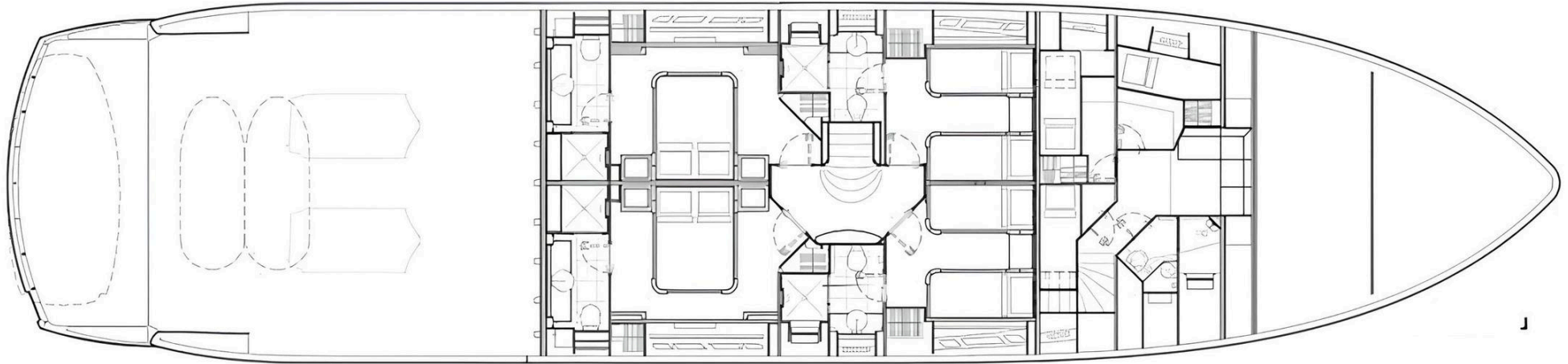
# General Arrangement



FLYBRIDGE



MAIN DECK



LOWER DECK



KIRILL KUATOV

+377 607 93 15 20

+39 333 576 44 44

[Send e-mail](#)

[WhatsApp](#)

[Telegram](#)