



New Build

NAU
YACHTS

THOR

CATAMARAN SUNREEF YACHTS 22.78M 2026

€9,625,000
FLAG - CROATIA

CATAMARAN

THOR



THOR is a **Sunreef 70 Eco** catamaran delivered in 2026 by **Sunreef Yachts**, representing one of the most technologically advanced multihull platforms in the modern luxury eco-yachting segment. At approximately 23 metres in length, she combines the expansive living spaces and comfort characteristic of **Sunreef** with a fully integrated electric propulsion system and advanced engineering solutions focused on reducing noise, vibration, and fuel consumption.

A defining feature of **THOR** is her electric propulsion architecture, powered by twin Engiro motors integrated into an upgraded 180 kW energy system. Power is supplied through a 440 kWh battery bank supported by a 120 kW generator system. Additional solar panels are fully integrated into the yacht's structure, including the bimini, flybridge surfaces, and hull sides. This configuration enables near-silent cruising, extended quiet periods at anchor, reduced generator dependency, and significantly lower vibration levels compared to conventional diesel-powered yachts.

The layout follows a galley-up configuration, seamlessly integrating the galley and saloon into one open social environment. Accommodation is arranged for up to 8 guests across four en-suite staterooms, including a master suite and VIP cabin with king-size beds, as well as two guest cabins with queen-size beds.

Interiors are styled in a contemporary minimalist aesthetic featuring Skai leather finishes and integrated smart-control systems. The panoramic saloon includes a transformable dining area, a retractable 55-inch Samsung television, and a premium KEF sound system integrated with Denon and HEOS technology. Crew accommodation is arranged separately to ensure guest privacy.

The flybridge serves as one of the yacht's primary leisure spaces, offering lounge seating, a bar, electric BBQ, sunbathing areas, and panoramic views. A hydraulic swim platform aft provides convenient access to the water, while the foredeck functions as an additional lounge terrace.

THOR represents a new generation of luxury catamarans where the emphasis shifts away from outright speed toward onboard lifestyle quality, silence, stability, and energy efficiency - offering a refined and forward-thinking cruising experience.

[see more information about Catamaran THOR at www.nauyachts.com](http://www.nauyachts.com)

SPECIFICATION

SHIPYARD, MODEL	Sunreef Yachts 70
BUILT	2026
LENGTH	22.78 m
WATERLINE LENGTH	21.82 m
HULL CONFIGURATION	DISPLACEMENT
BEAM	10.85 m
RANGE	540
DRAFT	2.33 m
GROSS TONNAGE	115 GT
YACHT CLASS	RINA
CABINS	5+1
MASTER CABIN	LOWER DECK
GUESTS	10
BERTHS	10+2
CREW	2
HEADS	5+1

EXTERIOR DESIGN	SUNREEF YACHTS
INTERIOR DESIGN	SUNREEF YACHTS
HULL	GRP
SUPERSTRUCTURE	GRP
ENGINES	ENGIRO 370W 29016 SSR
TYPE OF DRIVE	SHAFT LINE
ENGINE HOURS	241 h
MAXIMUM SPEED	12 kn
CRUISING SPEED	9 kn
FUEL CONSUMPTION AT ECONOMICAL SPEED	N/A
FUEL	2000 l
GREY WATER	500 l
BLACK WATER	500 l
FRESH WATER	1600 l
DISPLACEMENT	48

[see more information about Catamaran THOR at www.nauyachts.com](http://www.nauyachts.com)



EXTERIOR SUNREEF 70 ECO 2026 THOR

CATAMARAN THOR



FLYBRIDGE DINING AREA

CATAMARAN THOR



MAIN SALON LOUNGE AREA

CATAMARAN THOR



MASTER CABIN

CATAMARAN THOR



MASTER BATHROOM

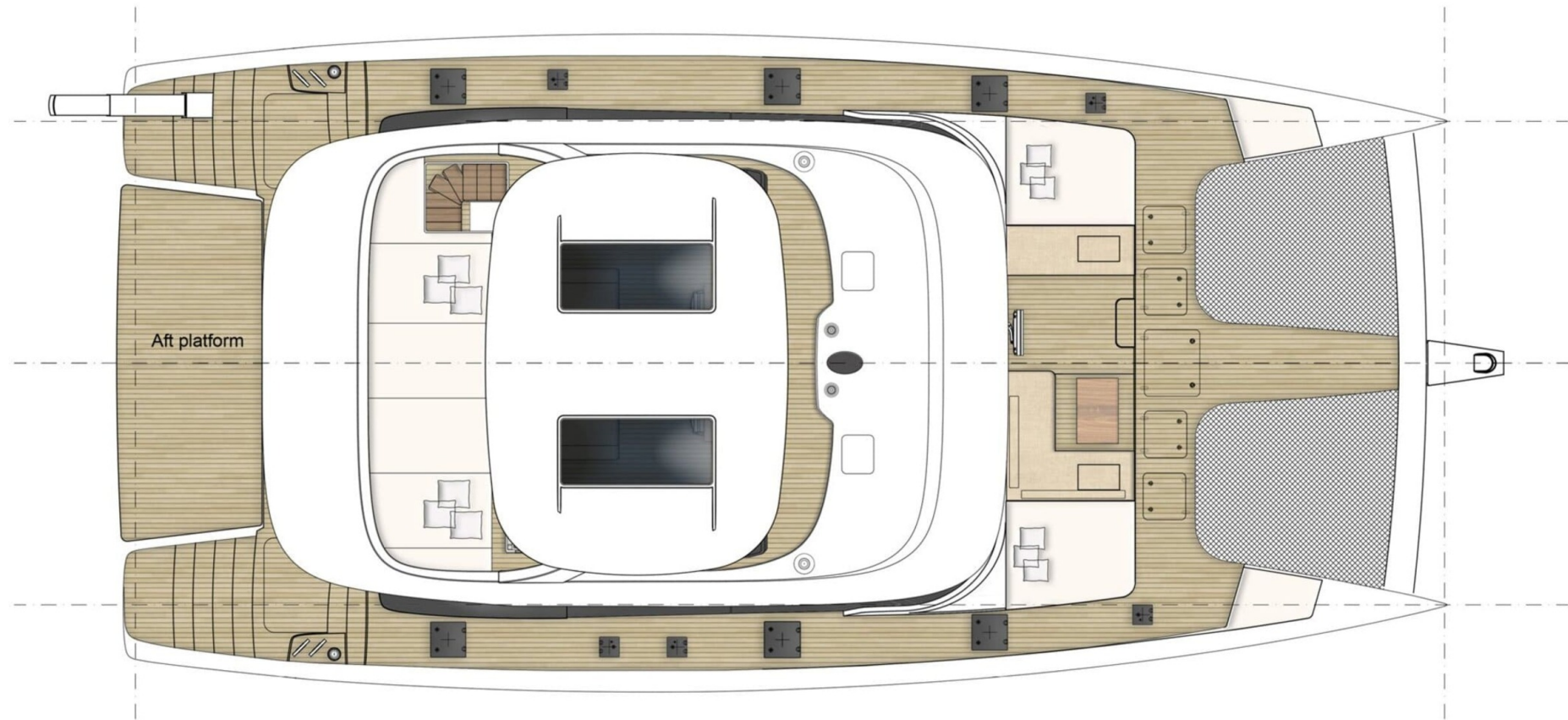
CATAMARAN THOR

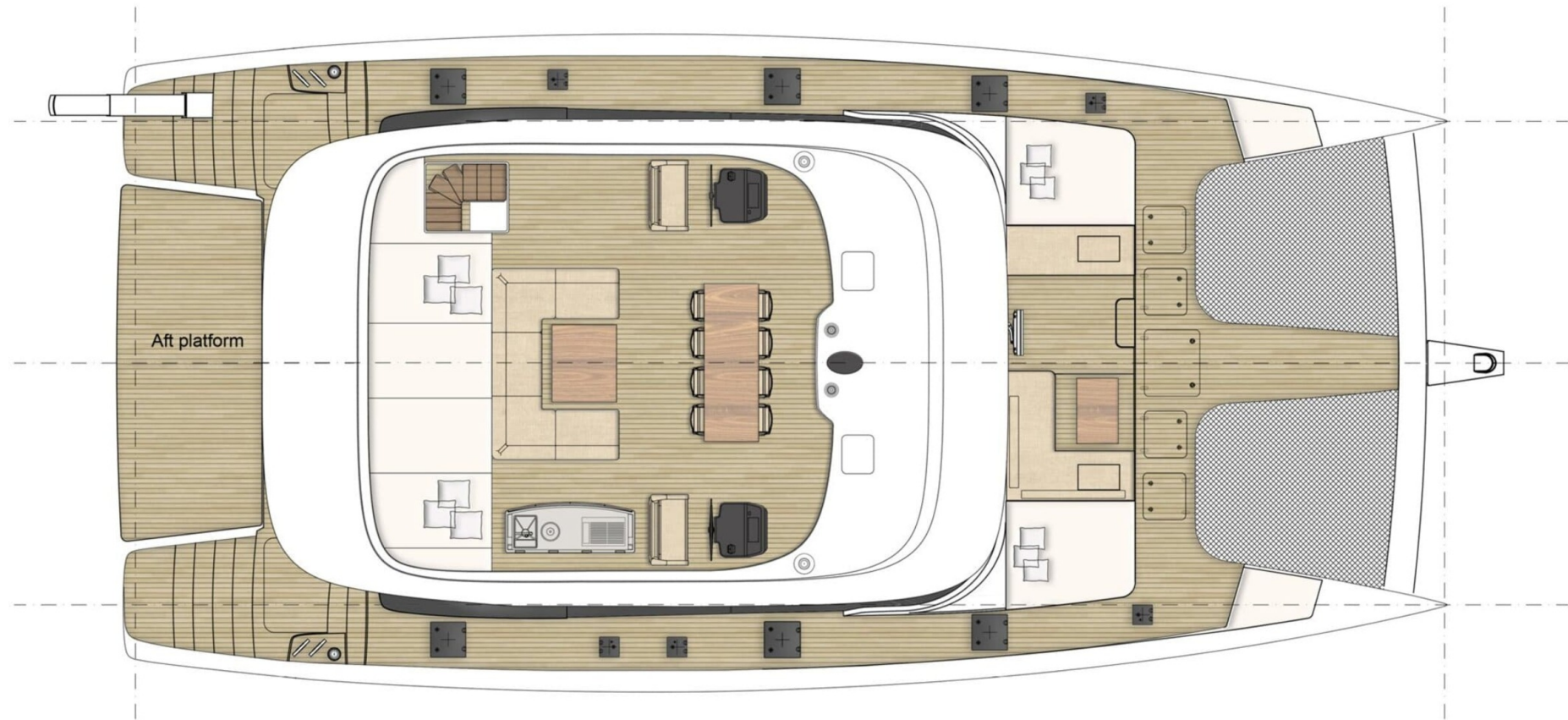


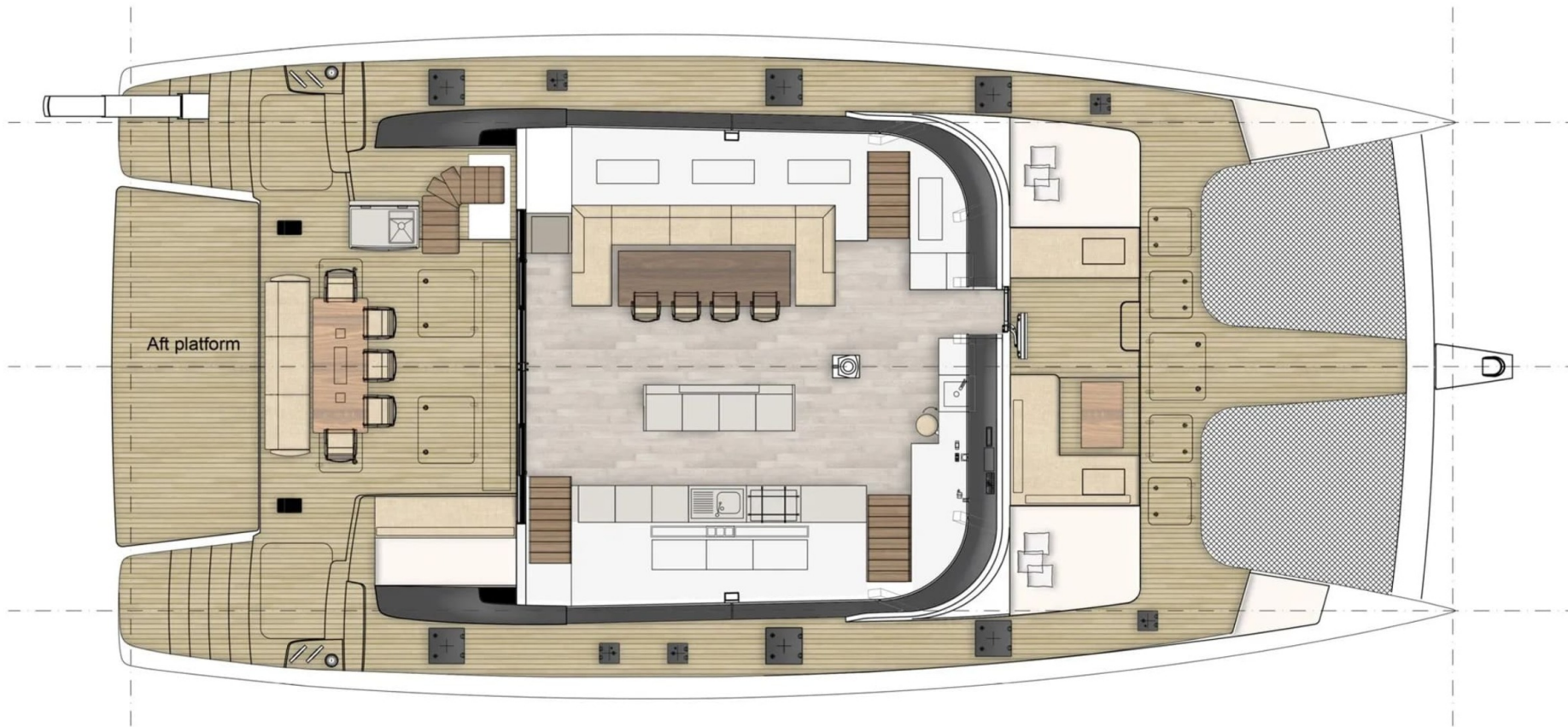
MASTER BATHROOM

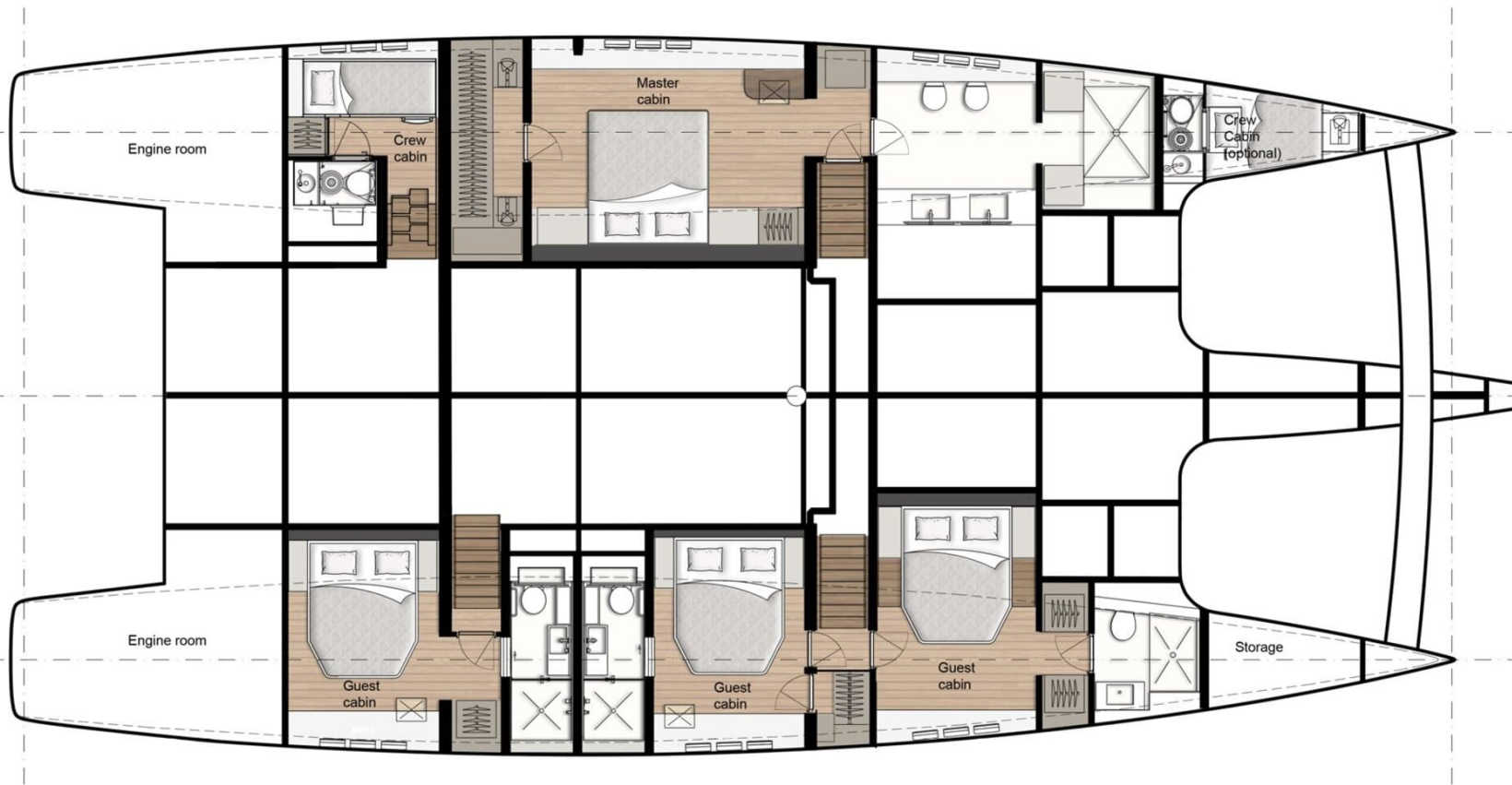
CATAMARAN THOR

General Arrangement











KIRILL KUATOV

+377 607 93 15 20

+39 333 576 44 44

[Send e-mail](#)

[WhatsApp](#)

[Telegram](#)