



Brokerage

NAU
YACHTS

NICOSTASIA

MOTOR YACHT VAN DER VALK 26M 2018

€4,150,000
FLAG - UK

MOTOR YACHT

NICOSTASIA



NICOSTASIA is a 26-metre **Van der Valk 26 RPH** motor yacht built in 2018. She combines Dutch build quality, an aluminium hull, and a restrained contemporary design. Currently stored in a covered shed and protected from the elements, she is presented in excellent condition.

Both the exterior and interior were designed by Guido de Groot. **NICOSTASIA** reflects a calm European aesthetic, with clean lines, quality materials, and a thoughtful layout free from unnecessary ornamentation. Her aluminium hull and superstructure underline the engineering-driven approach of **Van der Valk**, while the planing hull configuration provides confident performance underway.

NICOSTASIA accommodates up to 8 guests across 4 en-suite cabins. A separate crew area provides accommodation for 3 crew in 2 cabins, allowing service to be delivered without compromising guest privacy.

Exterior spaces include a flybridge, lounge areas, and open-air dining spaces. For a 26-metre yacht, **NICOSTASIA** offers a strong balance of interior volume, outdoor areas, and ease of movement around the deck, making her suitable both for relaxed coastal cruising and extended time at anchor.

Power is provided by twin MTU 10V 2000 M93 diesel engines, each rated at 1,500 hp. Fuel capacity is 10,500 litres, while fresh water capacity is 2,500 litres, supporting comfortable passages and autonomous stays on board.

Overall, **NICOSTASIA** is a well-built aluminium yacht with a strong engineering foundation, a practical layout, and a calm modern aesthetic. She is well suited to an owner seeking a yacht that is not ostentatious, but practical, reliable, and ready for private use and longer cruising.

[see more information about M/Y NICOSTASIA at www.nauyachts.com](http://www.nauyachts.com)

SPECIFICATION

SHIPYARD, MODEL	Van Der Valk 26 RPH
BUILT	2018
LENGTH	26 m
WATERLINE LENGTH	20.68 m
HULL CONFIGURATION	PLANING
BEAM	6.25 m
RANGE	N/A
DRAFT	1.7 m
GROSS TONNAGE	95 GT
YACHT CLASS	RINA
CABINS	4+2
MASTER CABIN	LOWER DECK
GUESTS	8
BERTHS	8+3
CREW	3
HEADS	4+2

EXTERIOR DESIGN	GUIDO DE GROOT
INTERIOR DESIGN	GUIDO DE GROOT
HULL	ALUMINUM
SUPERSTRUCTURE	ALUMINIUM
ENGINES	2 x MTU 10V 2000 M93 1500 h.p.
TYPE OF DRIVE	SHAFT LINE
ENGINE HOURS	2060 h
MAXIMUM SPEED	23 kn
CRUISING SPEED	18 kn
FUEL CONSUMPTION AT ECONOMICAL SPEED	~ 240 l/h
FUEL	10500 l
GREY WATER	1000 l
BLACK WATER	1000 l
FRESH WATER	2500 l
DISPLACEMENT	88

[see more information about M/Y NICOSTASIA at www.nauyachts.com](http://www.nauyachts.com)



EXTERIOR VAN DER VALK 26 RPH 2018 MY
NICOSTASIA

M/Y NICOSTASIA



EXTERIOR VAN DER VALK 26 RPH 2018 MY
NICOSTASIA

M/Y NICOSTASIA



EXTERIOR VAN DER VALK 26 RPH 2018 MY
NICOSTASIA

M/Y NICOSTASIA



EXTERIOR VAN DER VALK 26 RPH 2018 MY
NICOSTASIA

M/Y NICOSTASIA



EXTERIOR VAN DER VALK 26 RPH 2018 MY
NICOSTASIA

M/Y NICOSTASIA



EXTERIOR VAN DER VALK 26 RPH 2018 MY
NICOSTASIA

M/Y NICOSTASIA



EXTERIOR VAN DER VALK 26 RPH 2018 MY
NICOSTASIA

M/Y NICOSTASIA



AFT MAIN DECK DINING AREA

M/Y NICOSTASIA



MAIN SALON LOUNGE AREA

M/Y NICOSTASIA



MAIN SALON LOUNGE AREA

M/Y NICOSTASIA



MAIN SALON LOUNGE AREA

M/Y NICOSTASIA



MAIN SALON LOUNGE AREA

M/Y NICOSTASIA



MAIN SALON DINING AREA

M/Y NICOSTASIA



MAIN SALON DINING AREA

M/Y NICOSTASIA



STAIRS FROM MD TO LD

M/Y NICOSTASIA



MAIN HELM STATION

M/Y NICOSTASIA



MASTER CABIN

M/Y NICOSTASIA



MASTER CABIN

M/Y NICOSTASIA



MASTER BATHROOM

M/Y NICOSTASIA



VIP CABIN

M/Y NICOSTASIA



VIP CABIN

M/Y NICOSTASIA



VIP CABIN

M/Y NICOSTASIA



GUEST CABIN

M/Y NICOSTASIA



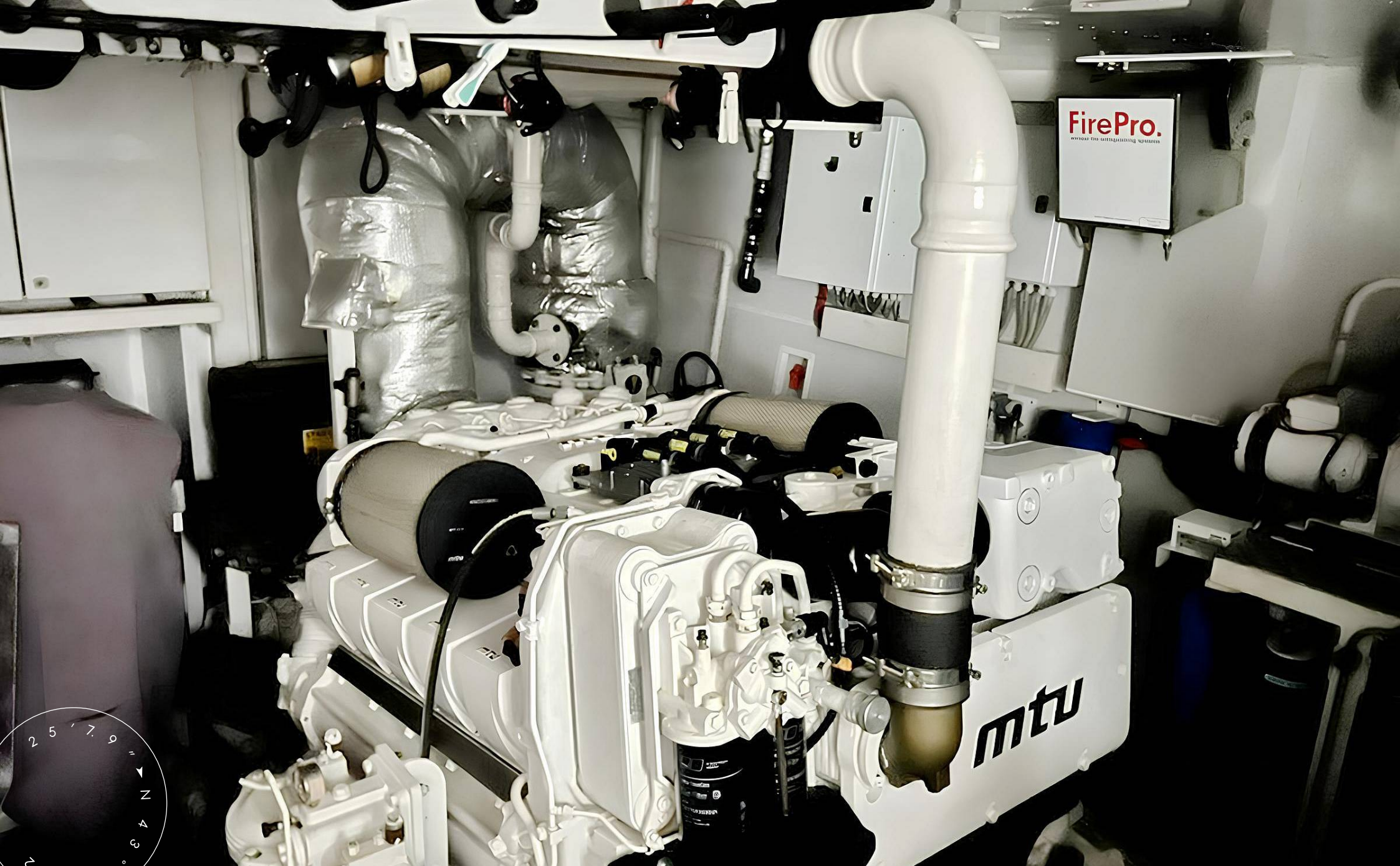
GUEST BATHROOM

M/Y NICOSTASIA



GALLEY

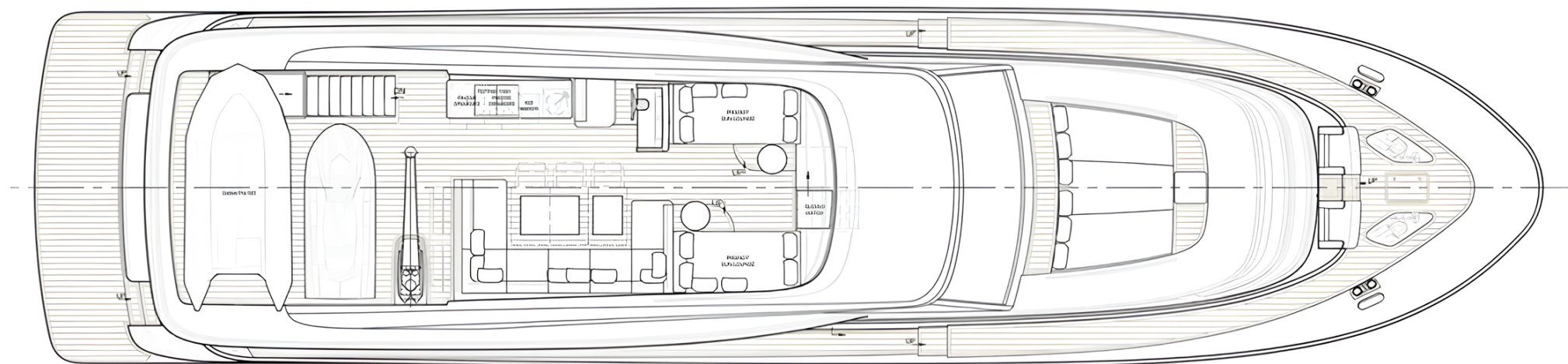
M/Y NICOSTASIA



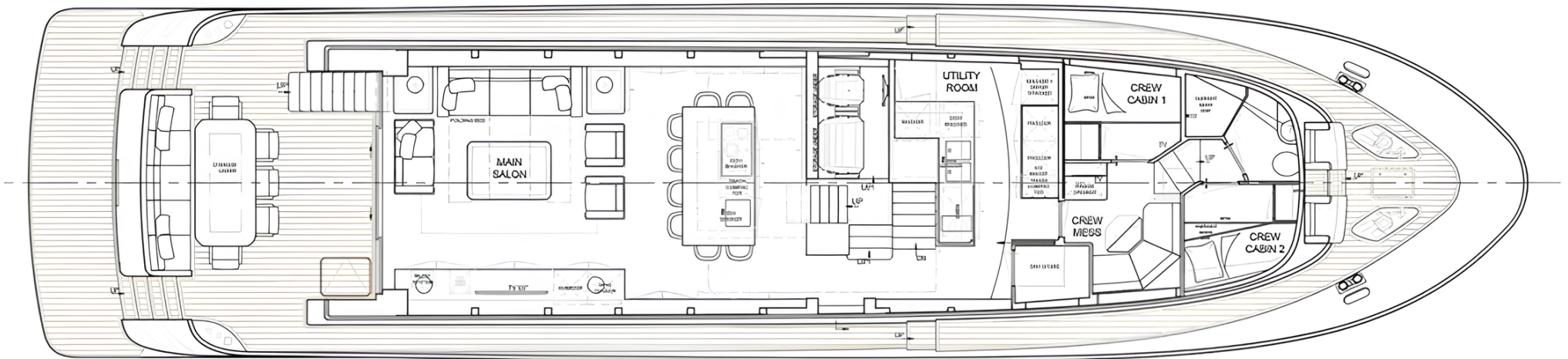
ENGINE ROOM

M/Y NICOSTASIA

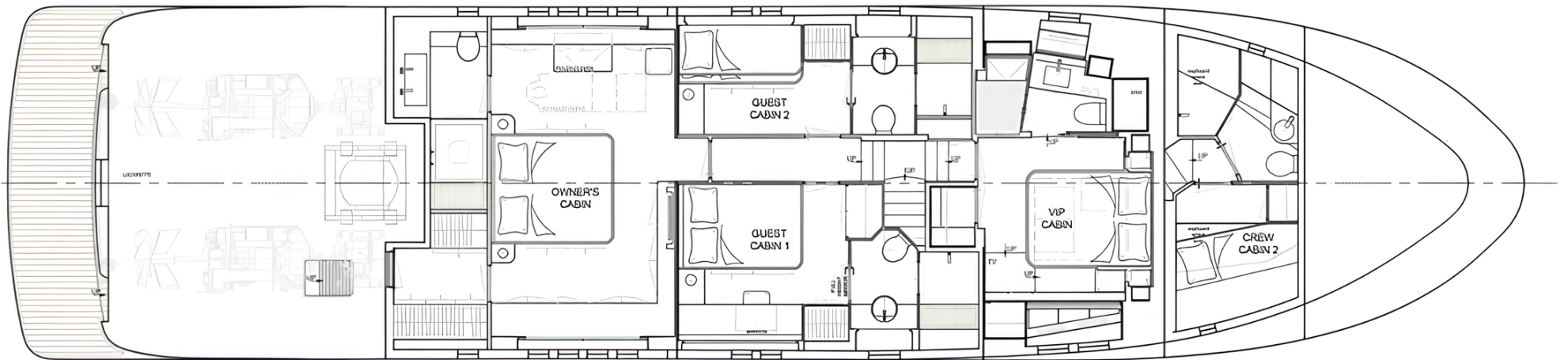
General Arrangement



FLYBRIDGE



MAIN DECK



LOWER DECK



KIRILL KUATOV

+377 607 93 15 20

+39 333 576 44 44

[Send e-mail](#)

[WhatsApp](#)

[Telegram](#)