



Brokerage

NAU
YACHTS

EVERDEEN

MOTOR YACHT SUNSEEKER 28.06M 2018

€6,250,000 (VAT paid)
FLAG - MALTA

MOTOR YACHT

EVERDEEN



EVERDEEN is a **Sunseeker 95 Yacht** that combines contemporary British design, substantial interior volume, and a rare five-cabin layout within a hull length below the 24-metre load line threshold. Used only privately by one owner since build, she is particularly attractive for a buyer seeking a spacious, technically complete, and well-equipped yacht for personal use.

The main deck is arranged as a bright open-plan space, with the saloon and dining area forming one continuous living environment. The galley and service area are positioned to port, creating a logical and practical service flow for the crew. One of the yacht's most appealing features is the starboard balcony on the main deck, accessed through a sliding glass door. It strengthens the saloon's connection to the sea and adds a sense of openness rarely found in this size category.

The master suite is located forward on the main deck and features an unusual, carefully considered configuration. The bed faces forward, while glazed sections replace traditional bulwarks to provide direct sea views. The bathroom and dressing area are positioned further forward and accessed by a spiral staircase, allowing the space to be used efficiently while creating a private owner's apartment with a distinctive character.

The flybridge is one of the yacht's key social areas. It includes an additional helm station, generous lounge areas, a full bar, ice makers, an electric grill, refrigerators, and an aft sun awning. A hydraulic crane is installed aft on the flybridge, allowing a Sea-Doo Spark to be carried there when the Williams tender is in use.

The foredeck is also well designed for outdoor relaxation. A large sunbathing area is positioned above the master suite, while a comfortable forward-facing sofa creates an inviting place to unwind. The aft cockpit, swim platform, side boarding ladder, and hydraulic Besenconi passerelle provide easy guest movement and practical access to the water.

Overall, **EVERDEEN** is a thoughtfully designed and well-equipped **Sunseeker 95 Yacht** for an owner who values volume, flexibility, and technical completeness. Five cabins, a main-deck master suite with panoramic views, a starboard balcony, stabilisation, advanced navigation, a spacious flybridge, and a private ownership history make her a strong proposition in the segment of large motor yachts below the 24-metre load line threshold.

[see more information about M/Y EVERDEEN at www.nauyachts.com](http://www.nauyachts.com)

SPECIFICATION

SHIPYARD, MODEL	Sunseeker 95 Yacht
BUILT	2018
LENGTH	28.06 m
WATERLINE LENGTH	23.72 m
HULL CONFIGURATION	PLANING
BEAM	6.55 m
RANGE	900
DRAFT	2.13 m
GROSS TONNAGE	102.4 GT
YACHT CLASS	RINA
CABINS	5+2
MASTER CABIN	MAIN DECK
GUESTS	10
BERTHS	10+4
CREW	4
HEADS	6+1

EXTERIOR DESIGN	SUNSEEKER
INTERIOR DESIGN	SUNSEEKER
HULL	GRP
SUPERSTRUCTURE	GRP
ENGINES	2 x MAN 12V 1900 h.p.
TYPE OF DRIVE	SHAFT LINE
ENGINE HOURS	1730 h
MAXIMUM SPEED	27 kn
CRUISING SPEED	17 kn
FUEL CONSUMPTION AT ECONOMICAL SPEED	~ 500 l/h
FUEL	12000 l
GREY WATER	700 l
BLACK WATER	800 l
FRESH WATER	1750 l
DISPLACEMENT	84

[see more information about M/Y EVERDEEN at www.nauyachts.com](http://www.nauyachts.com)



EXTERIOR SUNSEEKER 95 YACHT 2018 MY
EVERDEEN

M/Y EVERDEEN



EXTERIOR SUNSEEKER 95 YACHT 2018 MY
EVERDEEN

M/Y EVERDEEN



EXTERIOR SUNSEEKER 95 YACHT 2018 MY
EVERDEEN

M/Y EVERDEEN



EXTERIOR SUNSEEKER 95 YACHT 2018 MY
EVERDEEN

M/Y EVERDEEN



EXTERIOR SUNSEEKER 95 YACHT 2018 MY
EVERDEEN

M/Y EVERDEEN



FLYBRIDGE LOUNGE AREA

M/Y EVERDEEN



FLYBRIDGE LOUNGE AREA

M/Y EVERDEEN



FLYBRIDGE LOUNGE AREA

M/Y EVERDEEN



FLYBRIDGE DINING AREA

M/Y EVERDEEN



FLYBRIDGE DINING AREA

M/Y EVERDEEN



FLYBRIDGE DINING AREA

M/Y EVERDEEN



AFT AREA

M/Y EVERDEEN



COCKPIT DINING AREA

M/Y EVERDEEN



COCKPIT DINING AREA

M/Y EVERDEEN



COCKPIT DINING AREA

M/Y EVERDEEN



COCKPIT DINING AREA

M/Y EVERDEEN



FLYBRIDGE LOUNGE AREA

M/Y EVERDEEN



FLYBRIDGE LOUNGE AREA

M/Y EVERDEEN



FLYBRIDGE LOUNGE AREA

M/Y EVERDEEN



FLYBRIDGE DINING AREA

M/Y EVERDEEN



FLYBRIDGE DINING AREA

M/Y EVERDEEN



FLYBRIDGE DINING AREA

M/Y EVERDEEN



GALLEY

M/Y EVERDEEN



GALLEY

M/Y EVERDEEN



GALLEY

M/Y EVERDEEN



GALLEY

M/Y EVERDEEN



MASTER CABIN

M/Y EVERDEEN



MASTER CABIN

M/Y EVERDEEN



MASTER CABIN

M/Y EVERDEEN



MASTER CABIN

M/Y EVERDEEN



MASTER CABIN

M/Y EVERDEEN



MASTER BATHROOM

M/Y EVERDEEN



MASTER BATHROOM

M/Y EVERDEEN



VIP CABIN

M/Y EVERDEEN



VIP CABIN

M/Y EVERDEEN



VIP CABIN

M/Y EVERDEEN



VIP CABIN

M/Y EVERDEEN



VIP CABIN

M/Y EVERDEEN



GUEST CABIN

M/Y EVERDEEN



GUEST CABIN

M/Y EVERDEEN



GUEST CABIN

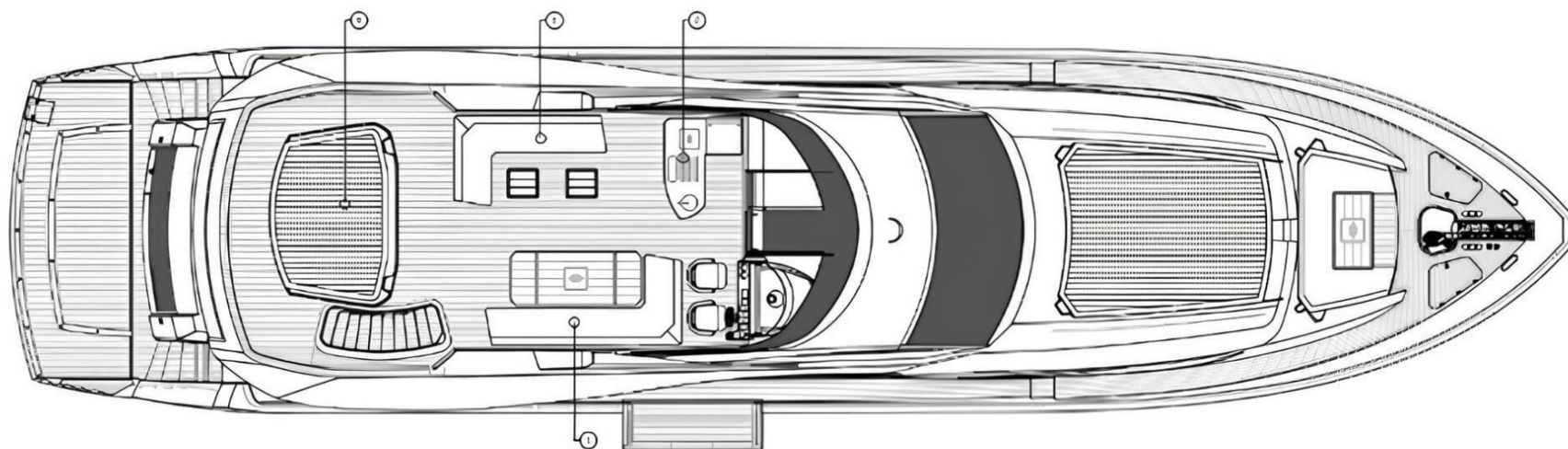
M/Y EVERDEEN



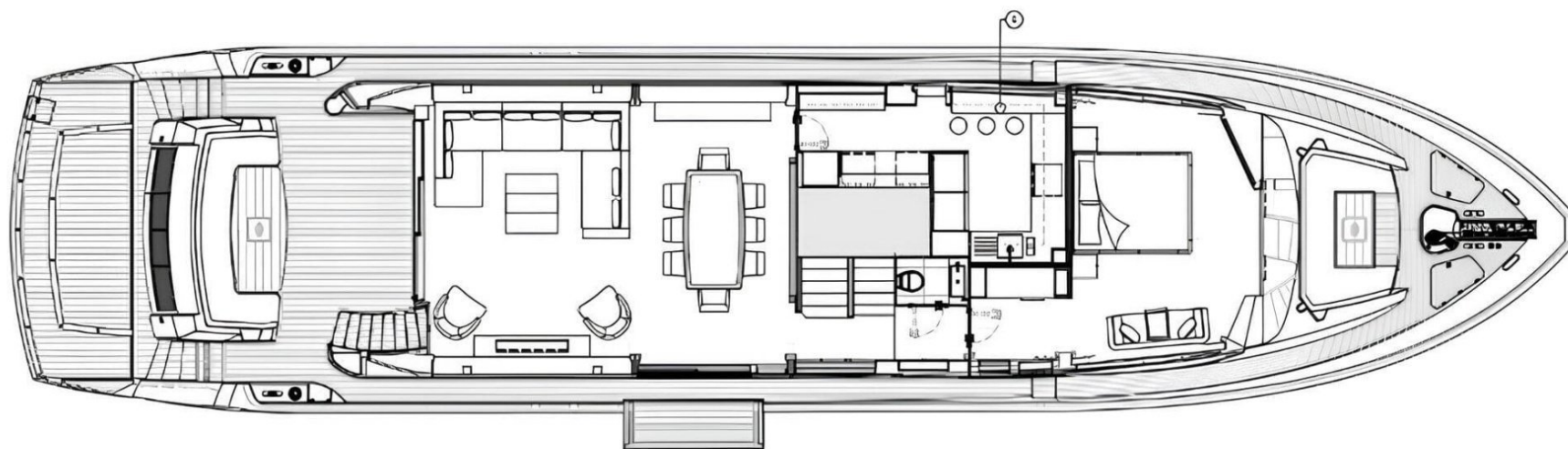
GUEST CABIN

M/Y EVERDEEN

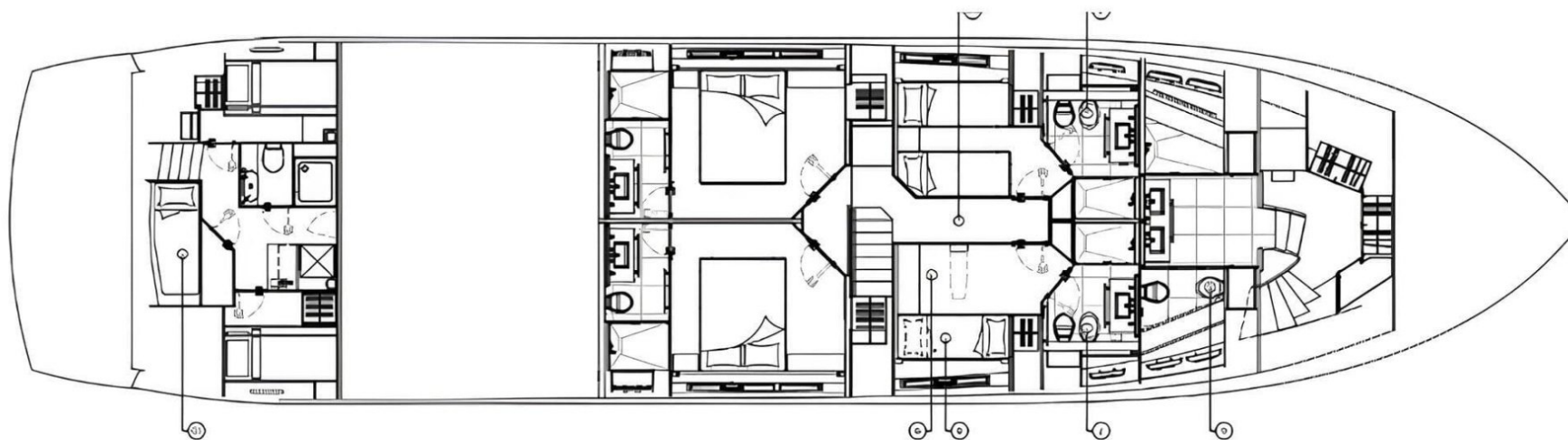
General Arrangement



FLYBRIDGE



MAIN DECK



LOWER DECK



KIRILL KUATOV

+377 607 93 15 20

+39 333 576 44 44

[Send e-mail](#)

[WhatsApp](#)

[Telegram](#)