



New Build

NAU
YACHTS

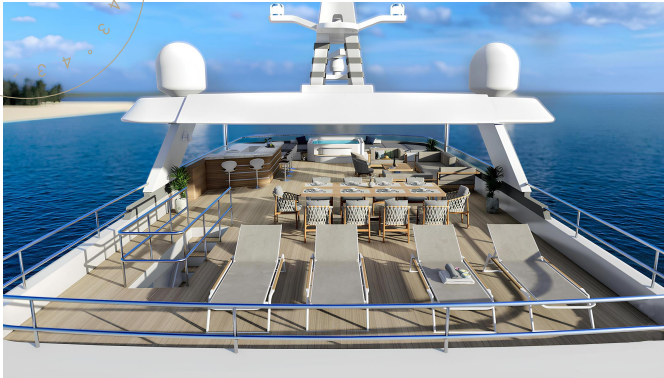
PROJECT ARTEMIS

MOTOR YACHT CUSTOM BUILT 47M 2026

€21,700,000
FLAG - TBD

MOTOR YACHT

PROJECT ARTEMIS



ARTEMIS is a 47-metre explorer yacht developed by **Joan Plana Palao, Karatas Yacht Design, and Arkin Pruva Yachts**. The project combines contemporary styling, long-range capability, and a hybrid propulsion system designed for quieter and more efficient cruising.

Built in steel and aluminium, **ARTEMIS** offers an internal volume of approximately 490 GT. Her exterior follows a modern explorer-yacht aesthetic, with a straight bow, expansive glazing, and long, clean deck lines.

Accommodation is arranged for up to 12 guests across 6 cabins, including two full-beam master suites. Crew accommodation is provided for 9 people. The interiors are designed in a calm contemporary style with a strong emphasis on natural light and connection to the sea. A fold-down side balcony in the main saloon further expands the interior living space.

On board are a swimming pool on the main deck, a beach club with direct water access, a Jacuzzi on the sundeck, an outdoor cinema, bar, lounge areas, gym, and massage room. The layout is designed so the yacht works equally well for long-range passages and relaxed time at anchor.

The key technical feature of **ARTEMIS** is her hybrid propulsion system. It combines twin MAN engines, electric motors, and a 330 kWh battery bank, allowing the yacht to operate in fully electric mode for approximately 3.5 hours at 7 knots. Cruising speed is around 12 knots, with a maximum speed of 16 knots. Range reaches approximately 5,000 nautical miles, while ABT Trac stabilisers provide a high level of comfort both underway and at anchor.

Overall, **ARTEMIS** is a contemporary explorer yacht with a strong focus on global cruising, hybrid technology, and comfortable onboard living. The project combines generous outdoor areas, developed wellness facilities, and the capability for extended voyages around the world.

see more information about M/Y PROJECT ARTEMIS at www.nauyachts.com

SPECIFICATION

SHIPYARD, MODEL	Custom Built 47M
BUILT	2026
LENGTH	47 m
WATERLINE LENGTH	43.94 m
HULL CONFIGURATION	DISPLACEMENT
BEAM	9 m
RANGE	4600
DRAFT	2.5 m
GROSS TONNAGE	490 GT
YACHT CLASS	RINA
CABINS	6+5
MASTER CABIN	MAIN DECK
GUESTS	12
BERTHS	12+9
CREW	9
HEADS	7+5

EXTERIOR DESIGN	KARATAS YACHT DESIGN
INTERIOR DESIGN	CA ARCHITECTS & BUJU DESIGN
HULL	STEEL
SUPERSTRUCTURE	ALUMINIUM
ENGINES	2 x MAN D2862 – LE438 900 h.p.
TYPE OF DRIVE	HYBRID
ENGINE HOURS	N/A
MAXIMUM SPEED	16 kn
CRUSING SPEED	12.5 kn
FUEL CONSUMPTION AT ECONOMICAL SPEED	N/A
FUEL	49000 l
GREY WATER	3000 l
BLACK WATER	3000 l
FRESH WATER	9000 l
DISPLACEMENT	415

[see more information about M/Y PROJECT ARTEMIS at www.nauyachts.com](http://www.nauyachts.com)



EXTERIOR ARKIN PRUVA YACHTS 47M 2026
MY PROJECT ARTEMIS

M/Y PROJECT ARTEMIS



EXTERIOR ARKIN PRUVA YACHTS 47M 2026
MY PROJECT ARTEMIS

M/Y PROJECT ARTEMIS



EXTERIOR ARKIN PRUVA YACHTS 47M 2026
MY PROJECT ARTEMIS

M/Y PROJECT ARTEMIS



EXTERIOR ARKIN PRUVA YACHTS 47M 2026
MY PROJECT ARTEMIS

M/Y PROJECT ARTEMIS



EXTERIOR ARKIN PRUVA YACHTS 47M 2026
MY PROJECT ARTEMIS

M/Y PROJECT ARTEMIS



EXTERIOR ARKIN PRUVA YACHTS 47M 2026
MY PROJECT ARTEMIS

M/Y PROJECT ARTEMIS



EXTERIOR ARKIN PRUVA YACHTS 47M 2026
MY PROJECT ARTEMIS

M/Y PROJECT ARTEMIS



EXTERIOR ARKIN PRUVA YACHTS 47M 2026
MY PROJECT ARTEMIS

M/Y PROJECT ARTEMIS



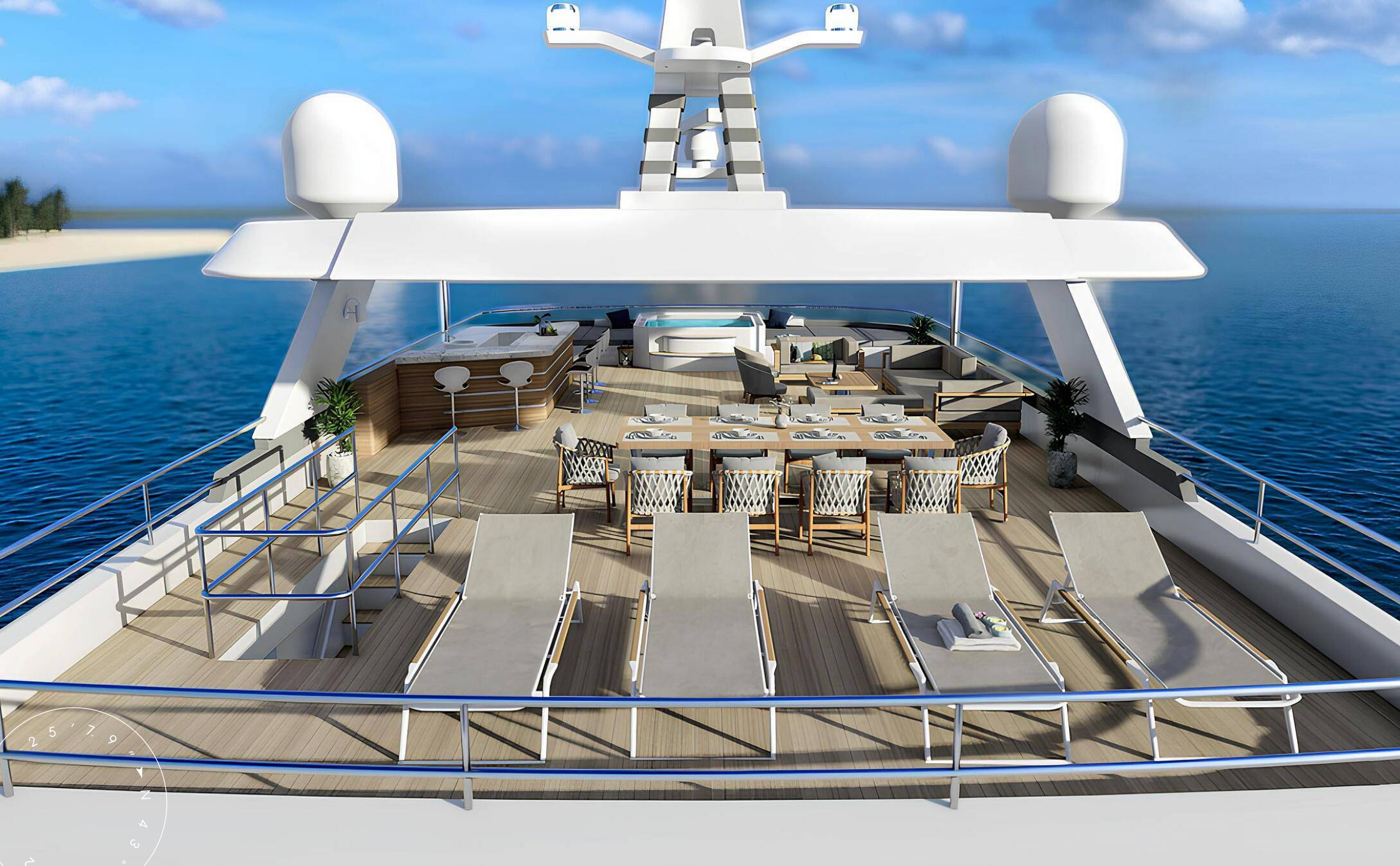
BEACH CLUB

M/Y PROJECT ARTEMIS



AFT MAIN DECK LOUNGE AREA

M/Y PROJECT ARTEMIS



SUNDECK LOUNGE AREA

M/Y PROJECT ARTEMIS



SUNDECK LOUNGE AREA

M/Y PROJECT ARTEMIS



MAIN SALON LOUNGE AREA

M/Y PROJECT ARTEMIS



MAIN SALON LOUNGE AREA

M/Y PROJECT ARTEMIS



MAIN SALON DINING AREA

M/Y PROJECT ARTEMIS



UPPER DECK SALOON

M/Y PROJECT ARTEMIS



UPPER DECK SALOON

M/Y PROJECT ARTEMIS



MASTER CABIN

M/Y PROJECT ARTEMIS



MASTER CABIN

M/Y PROJECT ARTEMIS



MASTER CABIN

M/Y PROJECT ARTEMIS



OFFICE IN THE MASTER CABIN

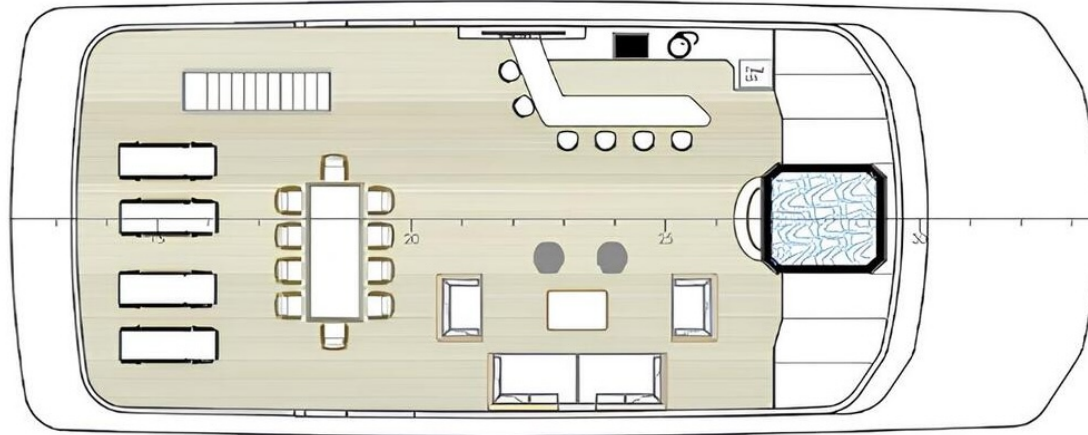
M/Y PROJECT ARTEMIS



MASTER BATHROOM

M/Y PROJECT ARTEMIS

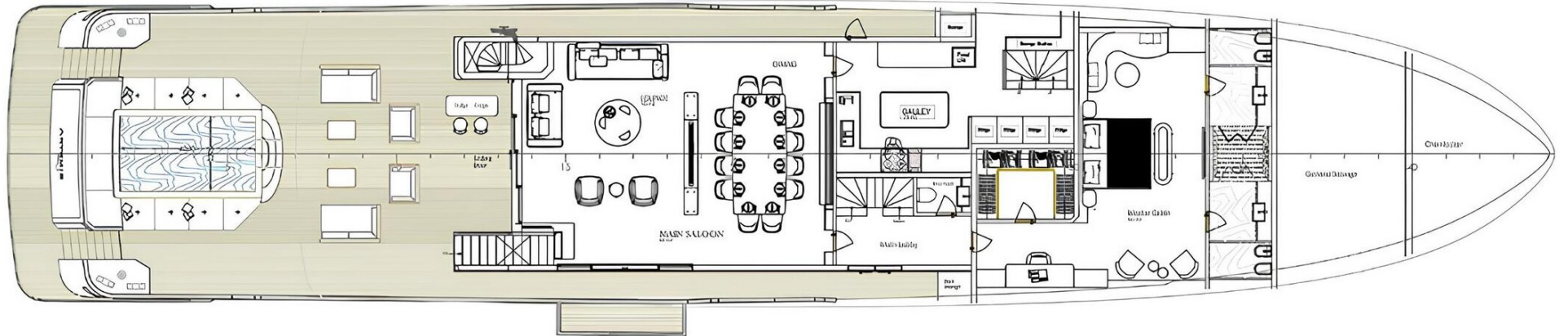
General Arrangement



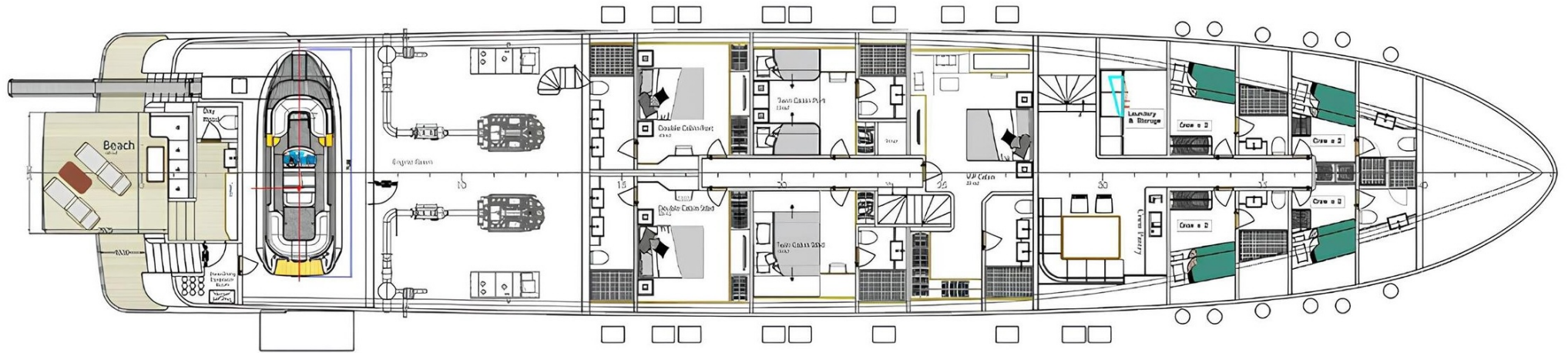
SUNDECK



UPPER DECK



MAIN DECK



LOWER DECK



KIRILL KUATOV

+377 607 93 15 20

+39 333 576 44 44

[Send e-mail](#)

[WhatsApp](#)

[Telegram](#)