



Brokerage

NAU  
YACHTS

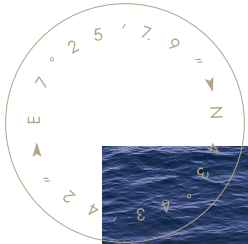
THEOLINA

MOTOR YACHT CODECASA 43M 2007

€11,500,000 (VAT paid)  
FLAG - MALTA

MOTOR YACHT

## THEOLINA



**THEOLINA** is a 43-metre full-displacement motor yacht built by **Codecasa Shipyards** in 2007. With a steel hull, aluminium superstructure, and an internal volume of approximately 489 GT, she offers the space and comfort typically associated with significantly larger superyachts.

Between 2021 and 2026, **THEOLINA** underwent an extensive upgrade programme, including a full interior refit, new generators, updated navigation systems, technical modernisation, and redesigned exterior guest areas. The yacht is presented in fully operational condition and is equally suitable for private ownership or charter use. Accommodation is arranged for up to 12 + 1 guests across 6 cabins. The layout includes a main-deck owner's suite, two VIP cabins, and two twin cabins with Pullman berths. Crew accommodation is arranged in 5 cabins for up to 9 crew members.

The interior by Studio Della Rolla combines classic Italian styling with more contemporary elements introduced during the refit. Finishes, furnishings, fabrics, and guest areas have all been updated, including the main saloon, which now features a redesigned lounge area and bar.

The sundeck benefits from new teak decking, a bar, and refreshed lounge spaces. Spacious exterior decks and a true displacement platform provide a high level of comfort both underway and at anchor.

**THEOLINA** is powered by twin Caterpillar 3512B engines producing 1,950 hp each. Cruising speed is approximately 14 knots, with a maximum speed of 17 knots. Range reaches around 3,000 nautical miles.

Technical equipment includes Starlink connectivity, a Crestron automation system, Sonos audio, Furuno navigation equipment, Tecnicomar watermakers, an upgraded AV system, and a professionally equipped galley fitted with Miele and Hoshizaki appliances.

With EU VAT paid, substantial internal volume, a modernised technical platform, and strong long-range cruising capability, **THEOLINA** remains one of the most compelling **Codecasa** yachts in the 40+ metre segment.

[see more information about M/Y THEOLINA at www.nauyachts.com](http://www.nauyachts.com)

# SPECIFICATION

SHIPYARD, MODEL	Codecasa 43M
BUILT	2007
LENGTH	43 m
WATERLINE LENGTH	38.7 m
HULL CONFIGURATION	DISPLACEMENT
BEAM	8.9 m
RANGE	3000
DRAFT	2.8 m
GROSS TONNAGE	489 GT
YACHT CLASS	BUREAU VERITAS
CABINS	6+5
MASTER CABIN	MAIN DECK
GUESTS	13
BERTHS	13+9
CREW	9
HEADS	7+4

EXTERIOR DESIGN	CODECASA
INTERIOR DESIGN	STUDIO DELLA ROLLA
HULL	STEEL
SUPERSTRUCTURE	ALUMINIUM
ENGINES	2 x Caterpillar 3512B 1950 h.p.
TYPE OF DRIVE	SHAFT LINE
ENGINE HOURS	4300 h
MAXIMUM SPEED	17 kn
CRUSING SPEED	14 kn
FUEL CONSUMPTION AT ECONOMICAL SPEED	~ 400 l/h
FUEL	78000 l
GREY WATER	N/A
BLACK WATER	N/A
FRESH WATER	12000 l
DISPLACEMENT	390

[see more information about M/Y THEOLINA at www.nauyachts.com](http://www.nauyachts.com)



EXTERIOR CODECASA 43M 2007 MY  
THEOLINA

M/Y THEOLINA



EXTERIOR CODECASA 43M 2007 MY  
THEOLINA

M/Y THEOLINA



SUNDECK LOUNGE AREA

M/Y THEOLINA



SUNDECK LOUNGE AREA

M/Y THEOLINA



SUNDECK DINING AREA

M/Y THEOLINA



SUNDECK LOUNGE AREA

M/Y THEOLINA



BOW AREA

M/Y THEOLINA



AFT UPPER DECK DINING AREA

M/Y THEOLINA



AFT UPPER DECK DINING AREA

M/Y THEOLINA



AFT MAIN DECK LOUNGE AREA

M/Y THEOLINA



UPPER DECK SALOON DINING AREA

M/Y THEOLINA



UPPER DECK SALOON

M/Y THEOLINA



MAIN SALON LOUNGE AREA

M/Y THEOLINA



MAIN SALON LOUNGE AREA

M/Y THEOLINA



MAIN SALON LOUNGE AREA

M/Y THEOLINA



MAIN SALON DINING AREA

M/Y THEOLINA



MASTER CABIN

M/Y THEOLINA



MASTER BATHROOM

M/Y THEOLINA



STAIRS FROM MD TO LD

M/Y THEOLINA



VIP CABIN

M/Y THEOLINA



VIP CABIN

M/Y THEOLINA



VIP CABIN

M/Y THEOLINA



GUEST CABIN

M/Y THEOLINA



GUEST BATHROOM

M/Y THEOLINA



MAIN HELM STATION

M/Y THEOLINA



GALLEY

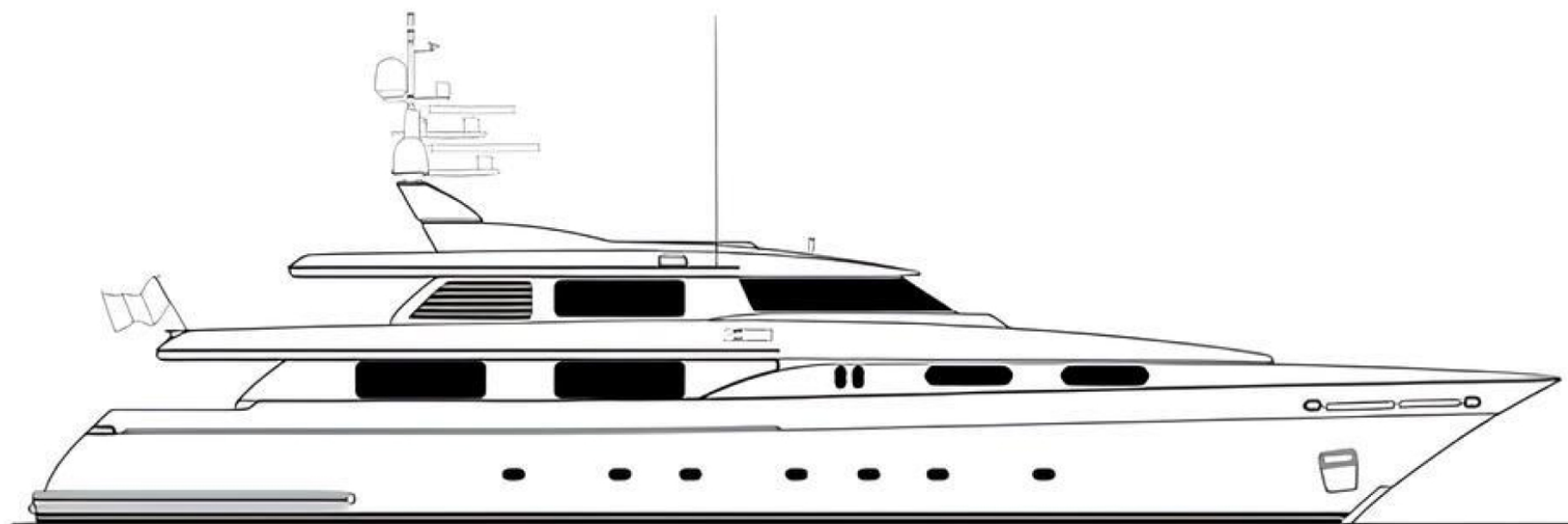
M/Y THEOLINA



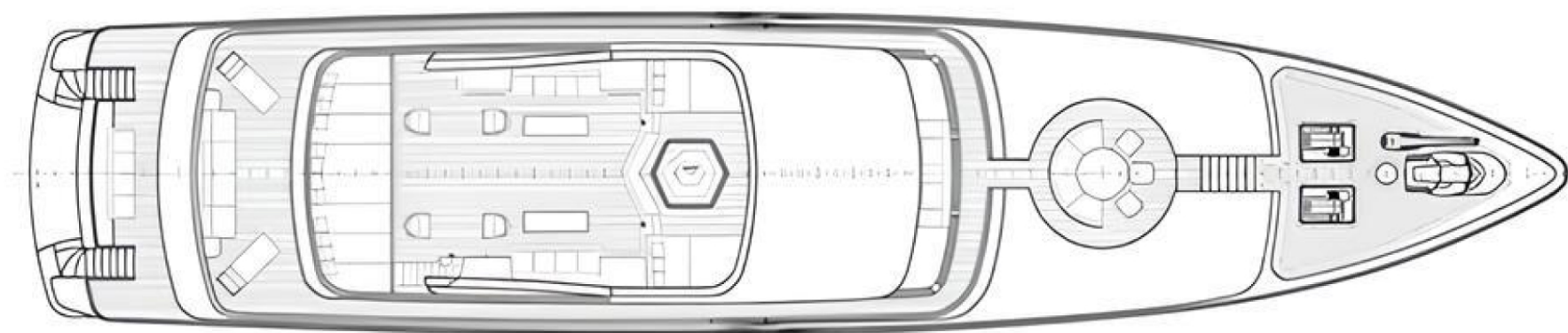
CREW AREA

M/Y THEOLINA

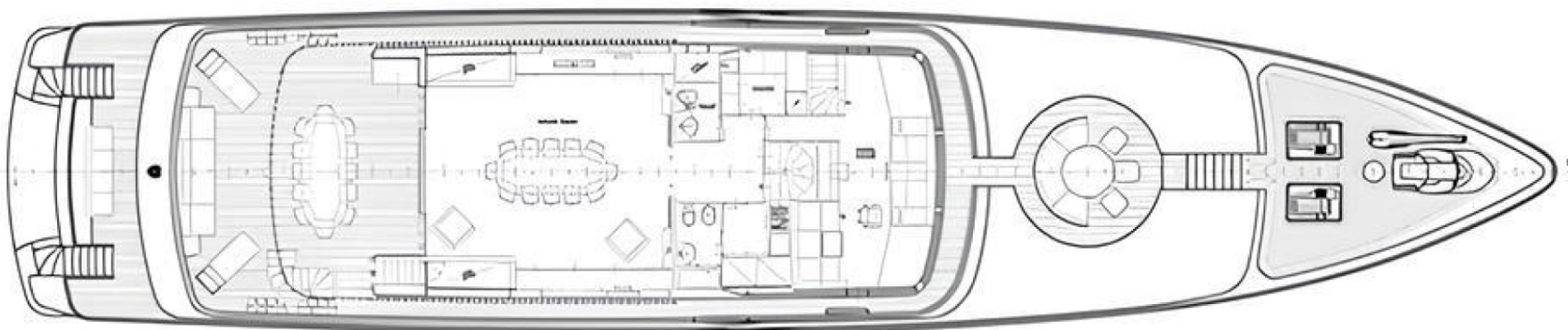
# General Arrangement



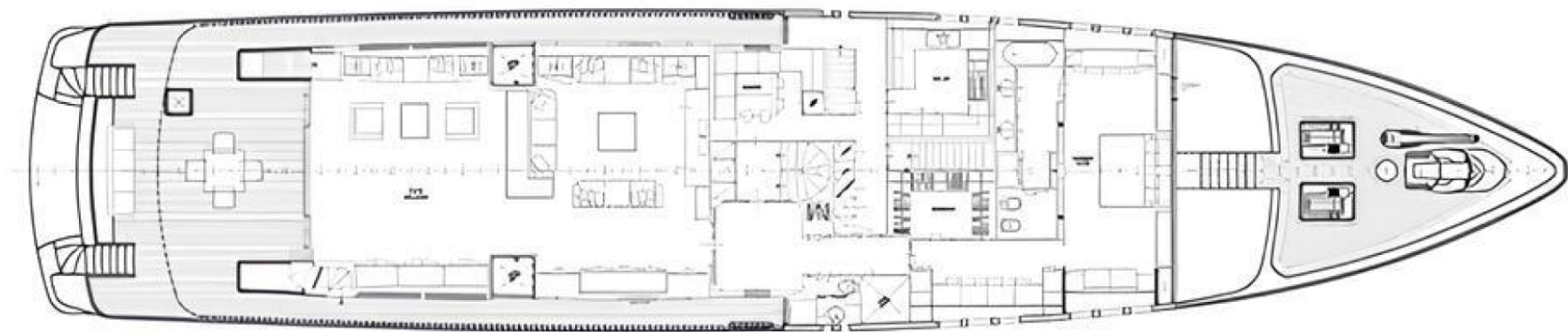
PROFILE



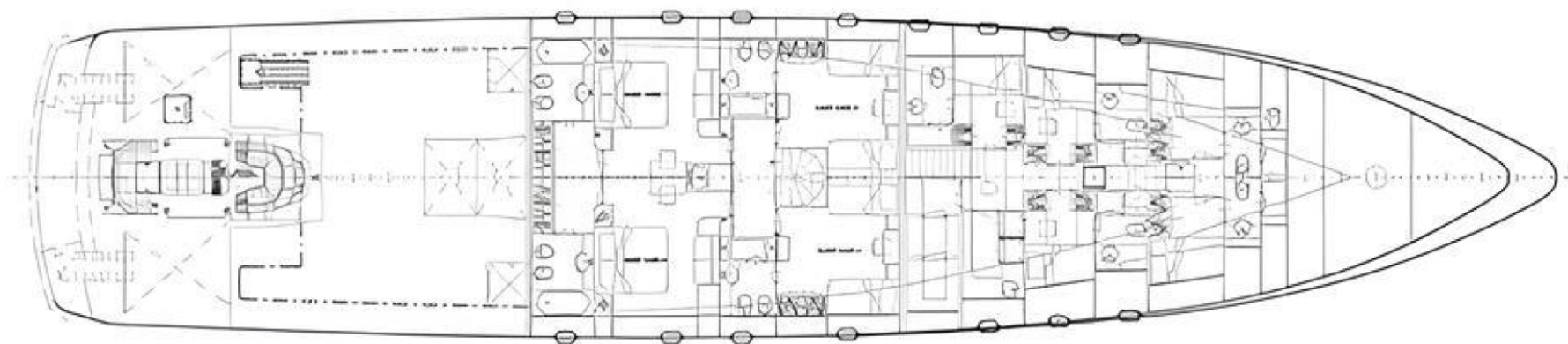
SUNDECK



UPPER DECK



MAIN DECK



LOWER DECK



## KIRILL KUATOV

+377 607 93 15 20

+39 333 576 44 44

[Send e-mail](#)

[WhatsApp](#)

[Telegram](#)