



Brokerage

NAU
YACHTS

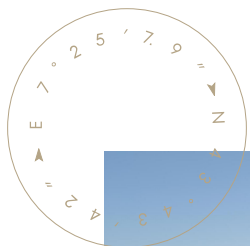
MAI DIRE MAI

MOTOR YACHT FILIPPETTI YACHT 30.5M 2024

€8,900,000
FLAG -

MOTOR YACHT

MAI DIRE MAI



MAI DIRE MAI is a 30.5-metre **Filippetti F100** motor yacht built in 2024 to a design by Fulvio De Simoni. She combines contemporary Italian styling, generous internal volume, and a rare six-cabin layout for a yacht of this size, accommodating up to 12 guests.

The accommodation layout includes a main-deck owner's suite, a forward VIP cabin, two double cabins, and two twin cabins. This configuration makes the yacht particularly well suited to family cruising and charters with larger groups of guests. Exterior spaces are designed around a Mediterranean lifestyle and active living close to the water. The aft beach club area features fold-down side platforms, sunbathing areas, and direct access to the sea. A 4.2-metre tender and a jet ski are stored in the garage.

The flybridge serves as the yacht's main open-air social space and includes lounge areas, a dining table for 10–12 guests, a full wet bar, multiple Miele grills, and a carbon-fibre hardtop. Direct access between the flybridge and the forward lounge area improves circulation throughout the yacht.

The interior follows a contemporary Italian aesthetic with natural oak, light lacquered finishes, leather detailing, and panoramic glazing. The main saloon feels bright and open, with a smooth connection between the interior and exterior living areas.

MAI DIRE MAI is powered by twin MAN V12-2000 engines producing 2,000 hp each. Cruising speed is approximately 18 knots, with a maximum speed of up to 23.5 knots. Comfort on board is enhanced by CMC electric stabilisers operating both underway and at anchor.

With her modern design, uncommon six-cabin configuration, and well-developed exterior areas, **MAI DIRE MAI** represents one of the most compelling yachts in the 30-metre segment for comfortable Mediterranean cruising and charter use.

[see more information about M/Y MAI DIRE MAI at www.nauyachts.com](http://www.nauyachts.com)

SPECIFICATION

SHIPYARD, MODEL	Filippetti Yacht F100
BUILT	2024
LENGTH	30.5 m
WATERLINE LENGTH	27.52 m
HULL CONFIGURATION	PLANING
BEAM	6.8 m
RANGE	300
DRAFT	2.2 m
GROSS TONNAGE	140 GT
YACHT CLASS	CE
CABINS	6+3
MASTER CABIN	MAIN DECK
GUESTS	12
BERTHS	12+5
CREW	5
HEADS	6+2

EXTERIOR DESIGN	FILIPPETTI
INTERIOR DESIGN	FULVIO DE SIMONI
HULL	GRP
SUPERSTRUCTURE	GRP
ENGINES	2 x MAN V12 2000 h.p.
TYPE OF DRIVE	SHAFT LINE
ENGINE HOURS	464 h
MAXIMUM SPEED	23.5 kn
CRUSING SPEED	18 kn
FUEL CONSUMPTION AT ECONOMICAL SPEED	~ 400 l/h
FUEL	13000 l
GREY WATER	1000 l
BLACK WATER	1000 l
FRESH WATER	2000 l
DISPLACEMENT	100

[see more information about M/Y MAI DIRE MAI at www.nauyachts.com](http://www.nauyachts.com)



EXTERIOR FILIPPETTI F100 2024 M/Y MAI DIRE
MAI

M/Y MAI DIRE MAI



EXTERIOR FILIPPETTI F100 2024 MY MAI DIRE
MAI

M/Y MAI DIRE MAI



EXTERIOR FILIPPETTI F100 2024 MY MAI DIRE MAI

M/Y MAI DIRE MAI



BOW LOUNGE AREA

M/Y MAI DIRE MAI



FLYBRIDGE LOUNGE AREA

M/Y MAI DIRE MAI



FLYBRIDGE LOUNGE AREA

M/Y MAI DIRE MAI



FLYBRIDGE DINING AREA

M/Y MAI DIRE MAI



COCKPIT DINING AREA

M/Y MAI DIRE MAI



AFT AREA

M/Y MAI DIRE MAI



SWIMMING PLATFORM

M/Y MAI DIRE MAI



MAIN SALON LOUNGE AREA

M/Y MAI DIRE MAI



MAIN SALON DINING AREA

M/Y MAI DIRE MAI



MASTER CABIN

M/Y MAI DIRE MAI



STAIRS FROM MD TO LD

M/Y MAI DIRE MAI



VIP CABIN

M/Y MAI DIRE MAI



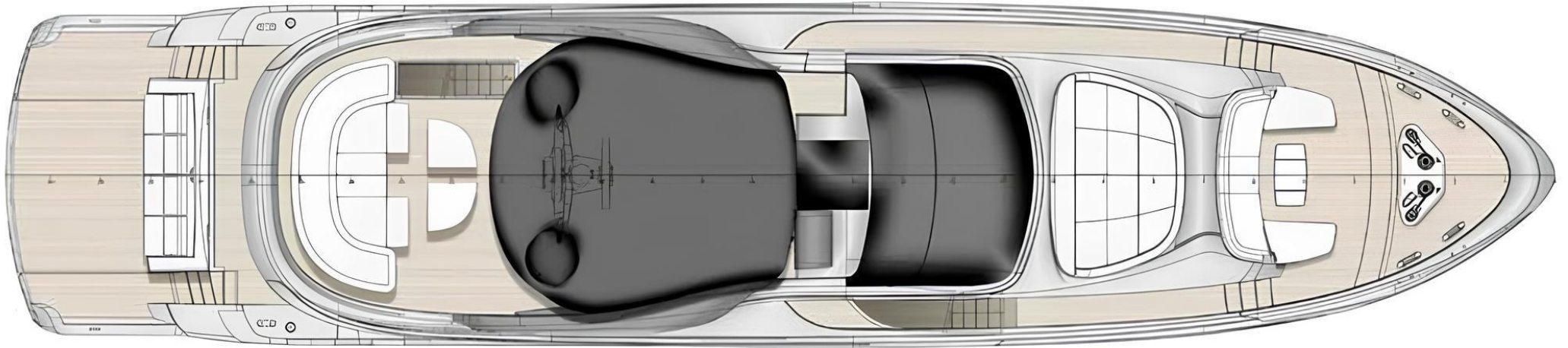
GUEST CABIN

M/Y MAI DIRE MAI

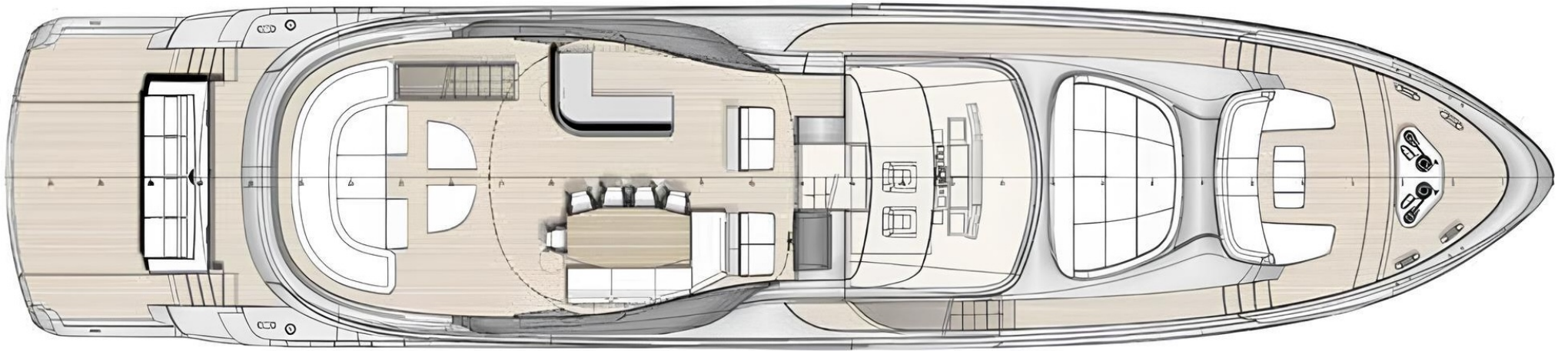
General Arrangement



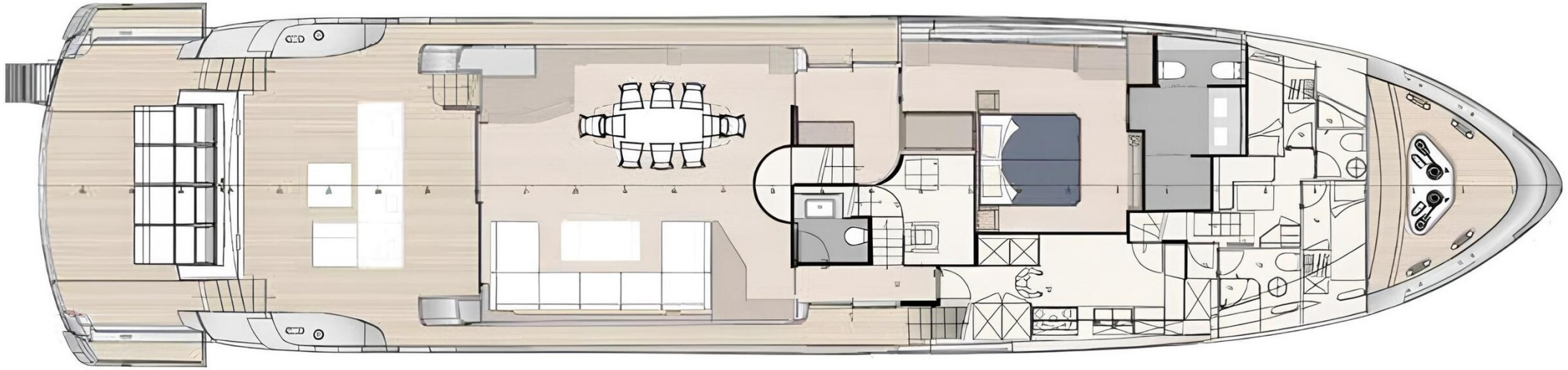
PROFILE



TOP VIEW



FLYBRIDGE



MAIN DECK



LOWER DECK



KIRILL KUATOV

+377 607 93 15 20

+39 333 576 44 44

[Send e-mail](#)

[WhatsApp](#)

[Telegram](#)