



Brokerage

NAU
YACHTS

PALATIAL

MOTOR YACHT CRN 42.6M 2013

€9,900,000

FLAG - MALTA

MOTOR YACHT

PALATIAL



PALATIAL is a 42.6-metre **CRN Navetta 43** delivered in 2013 and extensively refitted in both 2017 and 2024. Designed by Zuccon International Project, she combines substantial interior volume, impressive long-range capability and the comfort required for extended cruising.

Built on a full-displacement platform with a GRP hull and a gross tonnage of 456 GT, **PALATIAL** offers interior spaces more commonly associated with significantly larger yachts. Her generous volume creates an exceptional sense of openness throughout both guest and social areas.

Accommodation is arranged for up to 12 guests in 5 cabins. The layout includes a full-beam master suite on the main deck, two VIP cabins and two twin cabins with additional Pullman berths. Separate crew quarters accommodate up to 9 crew members, ensuring a high standard of service while maintaining guest privacy. One of the yacht's standout features is the private fold-out balcony connected directly to the master suite, creating an exclusive waterside retreat. Another notable addition is the elevator linking the main and upper decks, a feature rarely found aboard yachts of this size.

Exterior spaces are designed to maximise life outdoors. The spacious sundeck features a Jacuzzi, generous sunbathing areas and multiple lounge spaces, while the beach club provides direct access to the water and incorporates a fully equipped gym.

PALATIAL is powered by twin Caterpillar C32-C engines producing 1,500 hp each. She cruises comfortably at 13 knots, reaches a top speed of 15 knots and offers an impressive range of approximately 4,700 nautical miles at 10 knots. Naiad Zero Speed stabilisers ensure excellent comfort both underway and at anchor.

Following her most recent refits, **PALATIAL** benefits from refreshed interiors, upgraded social spaces, modern entertainment systems and Starlink satellite internet connectivity. With commercial certification and an excellent technical pedigree, she is equally suited to private ownership and charter operations.

[see more information about M/Y PALATIAL at www.nauyachts.com](http://www.nauyachts.com)

SPECIFICATION

SHIPYARD, MODEL	CRN Navetta 43
BUILT	2013
LENGTH	42.6 m
WATERLINE LENGTH	39.71 m
HULL CONFIGURATION	SEMI-DISPLACEMENT
BEAM	8.65 m
RANGE	4700
DRAFT	2.35 m
GROSS TONNAGE	456 GT
YACHT CLASS	RINA
CABINS	5+5
MASTER CABIN	MAIN DECK
GUESTS	12
BERTHS	12+9
CREW	9
HEADS	6+5

EXTERIOR DESIGN	ZUCCON INTERNATIONAL PROJECT & CRN
INTERIOR DESIGN	ZUCCON INTERNATIONAL PROJECT
HULL	GRP
SUPERSTRUCTURE	GRP
ENGINES	2 x Caterpillar C32 1500 h.p.
TYPE OF DRIVE	SHAFT LINE
ENGINE HOURS	4546 h
MAXIMUM SPEED	15 kn
CRUSING SPEED	13 kn
FUEL CONSUMPTION AT ECONOMICAL SPEED	~ 200 l/h
FUEL	45000 l
GREY WATER	N/A
BLACK WATER	N/A
FRESH WATER	7000 l
DISPLACEMENT	342

[see more information about M/Y PALATIAL at www.nauyachts.com](http://www.nauyachts.com)



EXTERIOR CRN NAVETTA 43 2013 MY PALATIAL

M/Y PALATIAL



EXTERIOR CRN NAVETTA 43 2013 MY PALATIAL

M/Y PALATIAL



EXTERIOR CRN NAVETTA 43 2013 MY PALATIAL

M/Y PALATIAL



EXTERIOR CRN NAVETTA 43 2013 MY PALATIAL

M/Y PALATIAL



AFT AREA

M/Y PALATIAL



AFT MAIN DECK DINING AREA

M/Y PALATIAL



AFT UPPER DECK DINING AREA

M/Y PALATIAL



SUNDECK LOUNGE AREA

M/Y PALATIAL



SUNDECK JACUZZI

M/Y PALATIAL



SUNDECK JACUZZI

M/Y PALATIAL



BOW LOUNGE AREA

M/Y PALATIAL



UPPER DECK SALOON

M/Y PALATIAL



MAIN SALON LOUNGE AREA

M/Y PALATIAL



MAIN SALON DINING AREA

M/Y PALATIAL



MAIN SALON DINING AREA

M/Y PALATIAL



MASTER CABIN

M/Y PALATIAL



MASTER CABIN

M/Y PALATIAL



MASTER BATHROOM

M/Y PALATIAL



LOWER DECK LOBBY

M/Y PALATIAL



VIP CABIN

M/Y PALATIAL



VIP BATHROOM

M/Y PALATIAL



GUEST CABIN

M/Y PALATIAL



GUEST CABIN

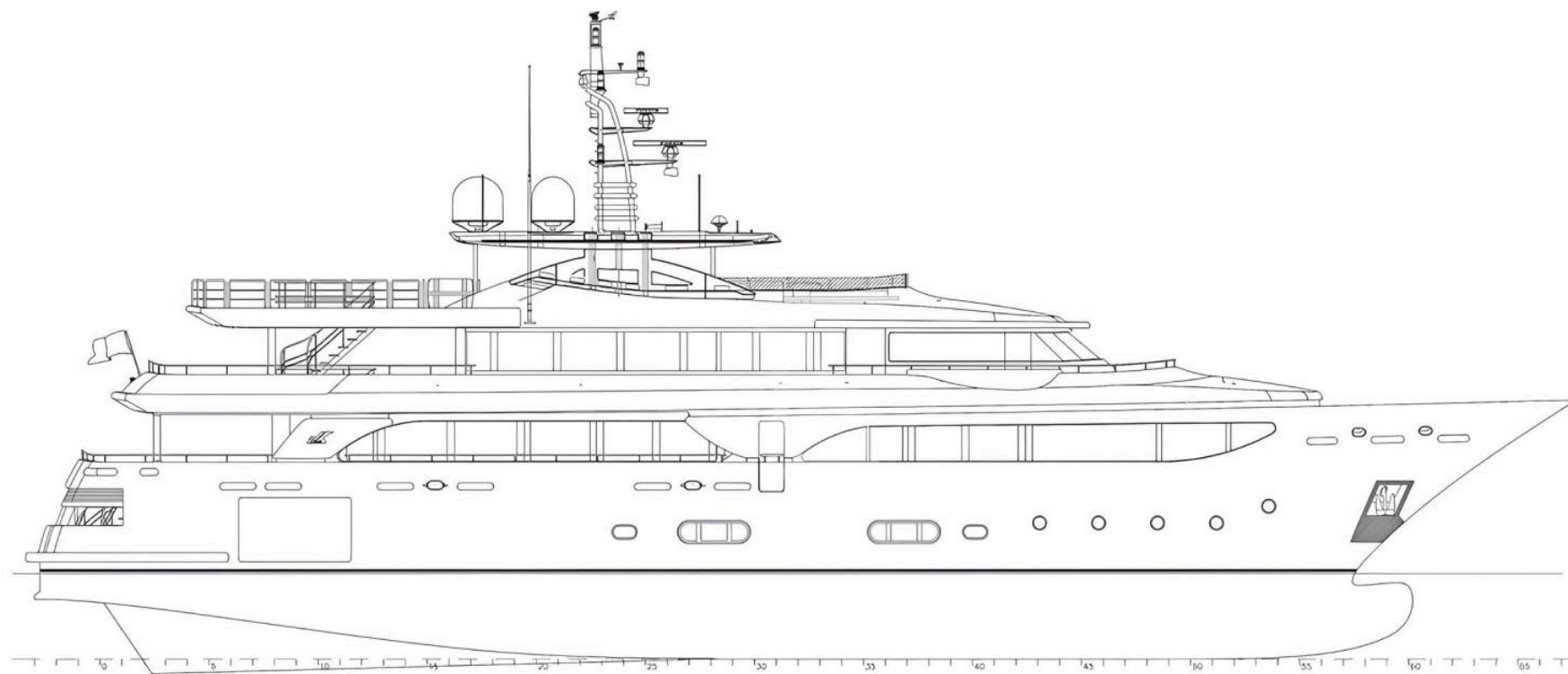
M/Y PALATIAL



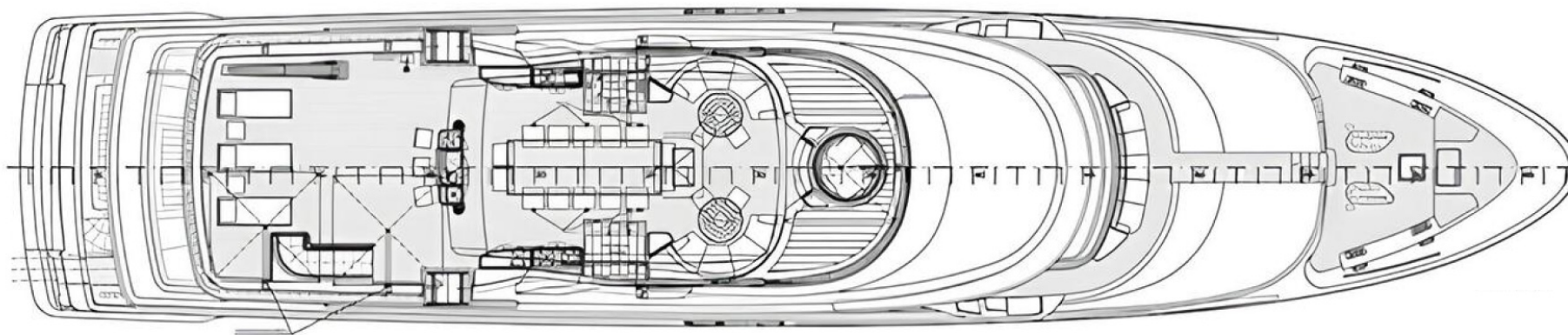
GYM

M/Y PALATIAL

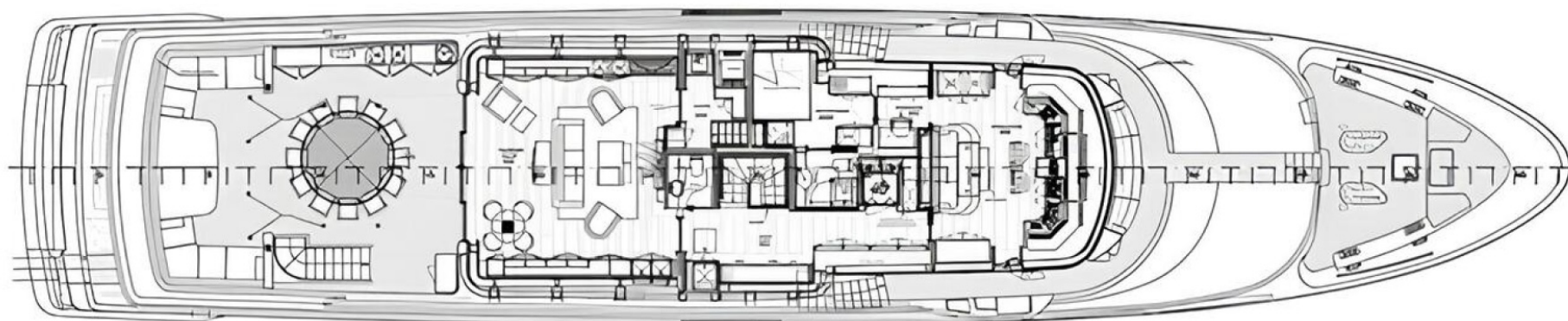
General Arrangement



PROFILE



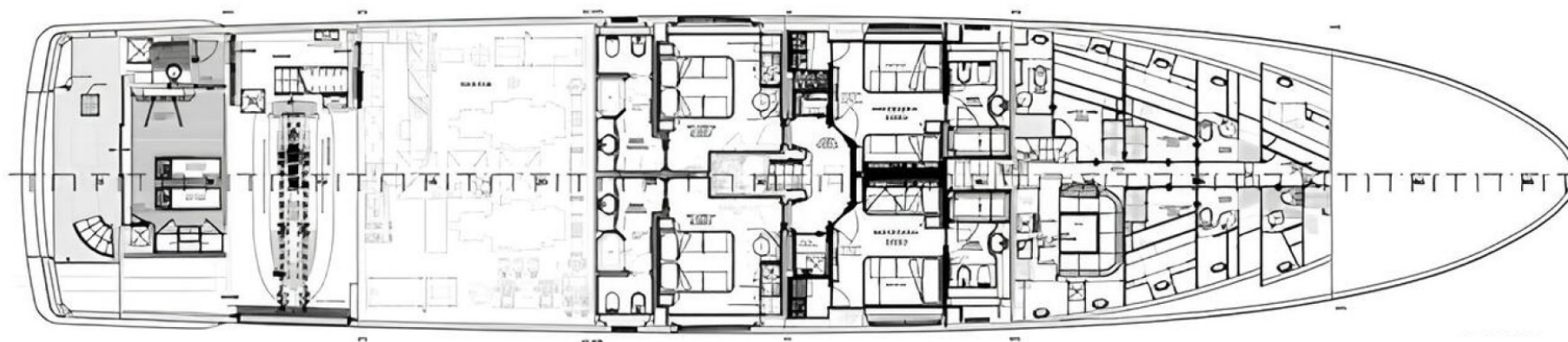
SUNDECK



UPPER DECK



MAIN DECK



LOWER DECK



KRISTINA KRAM

+377 678 63 33 13

Send e-mail

WhatsApp

Telegram

[More information about M/Y PALATIAL at www.nauyachts.com](http://www.nauyachts.com)