



Brokerage

NAU
YACHTS

LIL

MOTOR YACHT AZIMUT 26.09M 2019

€3,150,000
FLAG - UK

MOTOR YACHT

LIL



LIL is a 26.6-metre **Azimut Grande 25M** delivered in 2019, combining contemporary Italian design, strong performance and long-range cruising comfort. Designed by Stefano Righini with interiors by Achille Salvagni, she represents one of the most successful and sought-after models in the **Azimut Grande** range.

Expansive panoramic glazing and an open-plan layout fill the main saloon with natural light, creating a bright and welcoming atmosphere throughout the interior. The design reflects Achille Salvagni's signature contemporary Italian style, blending refined materials, elegant detailing and carefully balanced proportions to create spaces that feel both sophisticated and comfortable.

Accommodation is arranged for up to 8 guests in 4 cabins, including a full-beam owner's suite, a VIP cabin and two guest cabins. Separate crew quarters ensure a high level of service while maintaining privacy for guests throughout their time on board.

One of **LIL's** standout features is her spacious flybridge, equipped with an opening hardtop, multiple lounge areas and an al fresco dining space. Additional outdoor living areas include a foredeck sunbathing zone and a hydraulic swim platform that provides effortless access to the water.

Powered by twin 1,840 hp MAN engines, **LIL** cruises comfortably at 24 knots and reaches a top speed of 26 knots. Humphree stabilisers, modern navigation systems and a comprehensive specification further enhance comfort and usability, making this **Azimut Grande 25M** a well-equipped and highly capable yacht for private cruising throughout the Mediterranean and beyond.

[see more information about M/Y LIL at www.nauyachts.com](http://www.nauyachts.com)

SPECIFICATION

SHIPYARD, MODEL	Azimut Grande 25M
BUILT	2019
LENGTH	26.09 m
WATERLINE LENGTH	21.52 m
HULL CONFIGURATION	PLANING
BEAM	6.2 m
RANGE	285
DRAFT	1.85 m
GROSS TONNAGE	106 GT
YACHT CLASS	RINA
CABINS	4+2
MASTER CABIN	LOWER DECK
GUESTS	8
BERTHS	8+3
CREW	3
HEADS	5+1

EXTERIOR DESIGN	STEFANO RIGHINI
INTERIOR DESIGN	ACHILLE SALVAGNI ARCHITETTI
HULL	GRP
SUPERSTRUCTURE	GRP
ENGINES	2 x MAN 1840 h.p.
TYPE OF DRIVE	SHAFT LINE
ENGINE HOURS	1100 h
MAXIMUM SPEED	26 kn
CRUISING SPEED	24 kn
FUEL CONSUMPTION AT ECONOMICAL SPEED	~ 300 l/h
FUEL	6500 l
GREY WATER	500 l
BLACK WATER	500 l
FRESH WATER	1600 l
DISPLACEMENT	76.78

[see more information about M/Y LIL at www.nauyachts.com](http://www.nauyachts.com)



EXTERIOR AZIMUT GRANDE 25M 2019 MY LIL

M/Y LIL



AFT AREA

M/Y LIL



COCKPIT DINING AREA

M/Y LIL



COCKPIT GRILL

M/Y LIL



BOW LOUNGE AREA

M/Y LIL



BOW LOUNGE AREA

M/Y LIL



MAIN SALON LOUNGE AREA

M/Y LIL



MAIN SALON LOUNGE AREA

M/Y LIL



MAIN SALON LOBBY

M/Y LIL



MAIN HELM STATION

M/Y LIL



STAIRS FROM MD TO LD

M/Y LIL



MASTER CABIN

M/Y LIL



VIP CABIN

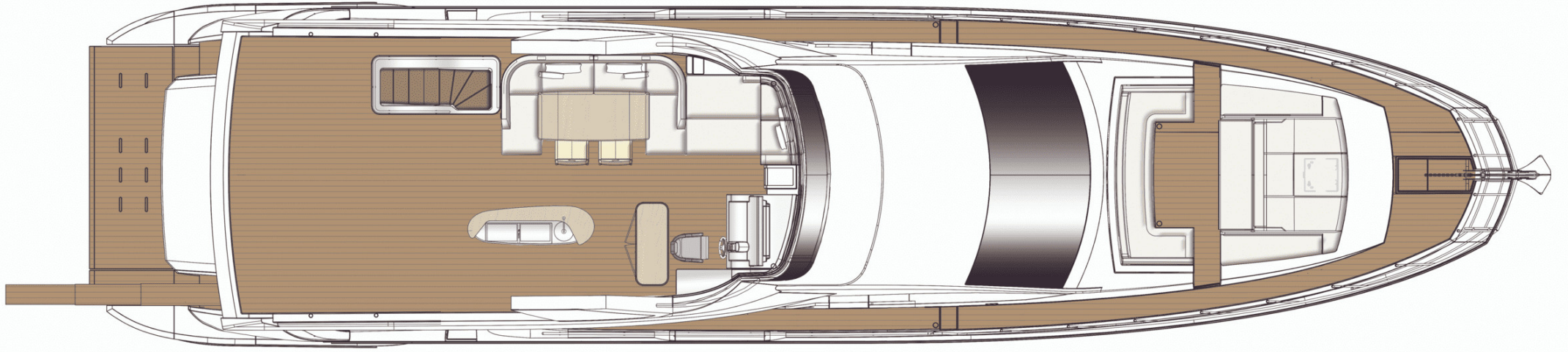
M/Y LIL



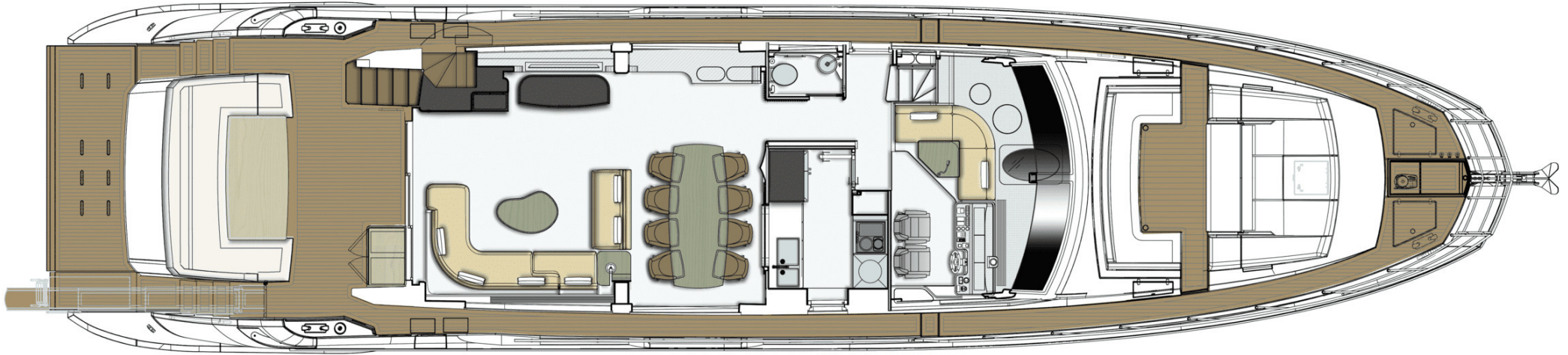
VIP CABIN

M/Y LIL

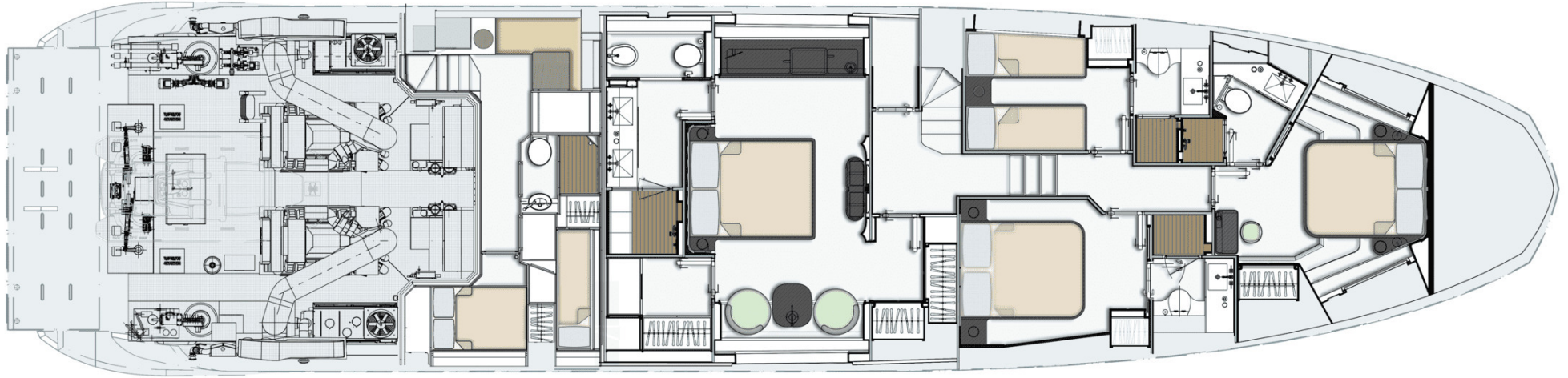
General Arrangement



FLYBRIDGE



MAIN DECK



LOWER DECK



KIRILL KUATOV

+377 607 93 15 20

+39 333 576 44 44

[Send e-mail](#)

[WhatsApp](#)

[Telegram](#)