



Brokerage

NAU
YACHTS

SED

MOTOR YACHT FAIRLINE 24M 2014

€1,350,000 (VAT paid)
FLAG - UK

MOTOR YACHT

SED



SED is a 24-metre **Fairline Squadron 78** delivered in 2014, combining British craftsmanship, a highly practical layout and impressive cruising performance. Widely regarded as one of the most successful models in the Fairline range, the **Squadron 78** offers generous interior volumes and well-designed outdoor living spaces that make her equally suited to family cruising, entertaining and extended stays on board.

The main saloon is bright and welcoming, with large panoramic windows that flood the interior with natural light. The open-plan layout seamlessly combines a comfortable lounge area, formal dining space and fully equipped galley, creating a versatile environment for both everyday living and entertaining. Finished in a contemporary style, the interior balances quality materials with practical design solutions tailored to life at sea.

Accommodation is provided for up to 8 guests in 4 cabins, including a full-beam owner's suite, a VIP cabin, one double cabin and one twin cabin. Separate crew quarters for two ensure efficient service while maintaining privacy throughout the guest areas.

One of **SED's** standout features is her expansive flybridge, which offers dedicated areas for lounging, sunbathing and al fresco dining. The aft cockpit provides an additional outdoor entertaining space, while the hydraulic swim platform creates effortless access to the water and enhances the yacht's connection to the sea. Powered by twin Caterpillar C32 engines producing 1,622 hp each, **SED** cruises comfortably between 18 and 22 knots and reaches a top speed of 32 knots. Side Power stabilisers, hydraulic bow and stern thrusters, a modern Garmin navigation suite, twin Onan generators and a watermaker contribute to a specification designed for comfortable, reliable cruising and extended time on board.

[see more information about M/Y SED at www.nauyachts.com](http://www.nauyachts.com)

SPECIFICATION

SHIPYARD, MODEL	Fairline Squadron 78
BUILT	2014
LENGTH	24 m
WATERLINE LENGTH	19.98 m
HULL CONFIGURATION	PLANING
BEAM	5.7 m
RANGE	500
DRAFT	2.6 m
GROSS TONNAGE	45 GT
YACHT CLASS	CE
CABINS	4+1
MASTER CABIN	LOWER DECK
GUESTS	8
BERTHS	8+2
CREW	2
HEADS	3+1

EXTERIOR DESIGN	BERNARD OLESINSKI
INTERIOR DESIGN	FAIRLINE YACHTS
HULL	GRP
SUPERSTRUCTURE	GRP
ENGINES	2 x Caterpillar C32 1622 h.p.
TYPE OF DRIVE	SHAFT LINE
ENGINE HOURS	1390 h
MAXIMUM SPEED	32 kn
CRUSING SPEED	22 kn
FUEL CONSUMPTION AT ECONOMICAL SPEED	~ 400 l/h
FUEL	6000 l
GREY WATER	N/A
BLACK WATER	N/A
FRESH WATER	1000 l
DISPLACEMENT	47

[see more information about M/Y SED at www.nauyachts.com](http://www.nauyachts.com)



EXTERIOR FAIRLINE SQUADRON 78 2014 MY
SED

M/Y SED



EXTERIOR FAIRLINE SQUADRON 78 2014 MY
SED

M/Y SED



EXTERIOR FAIRLINE SQUADRON 78 2014 MY
SED

M/Y SED



SWIMMING PLATFORM

M/Y SED



COCKPIT SEATING AREA

M/Y SED



COCKPIT DINING AREA

M/Y SED



BOW LOUNGE AREA

M/Y SED



FLYBRIDGE DINING AREA

M/Y SED



MAIN HELM STATION

M/Y SED



MASTER CABIN

M/Y SED



MASTER CABIN

M/Y SED



MASTER BATHROOM

M/Y SED



VIP CABIN

M/Y SED



VIP CABIN

M/Y SED



GUEST CABIN

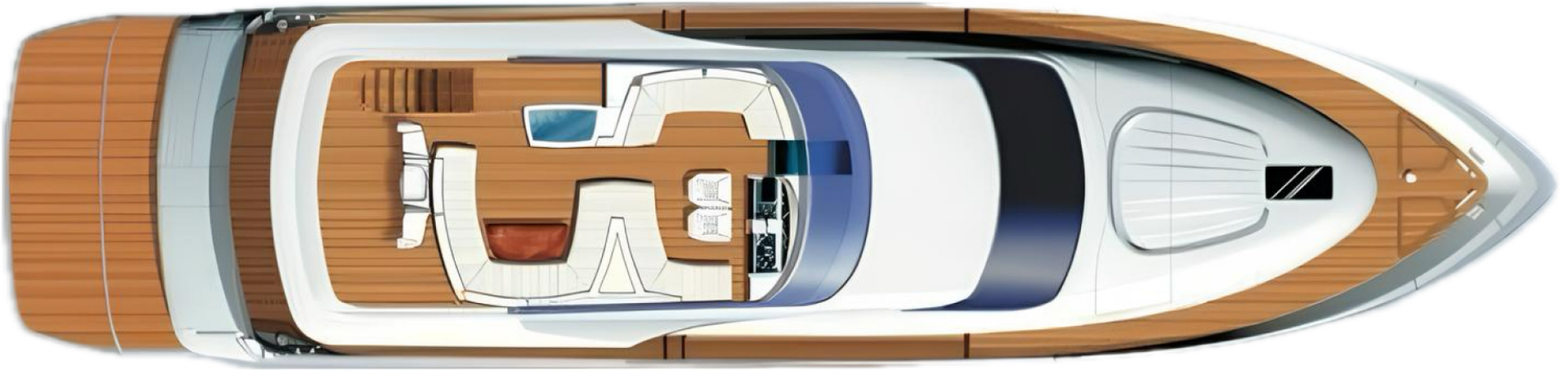
M/Y SED



GUEST CABIN

M/Y SED

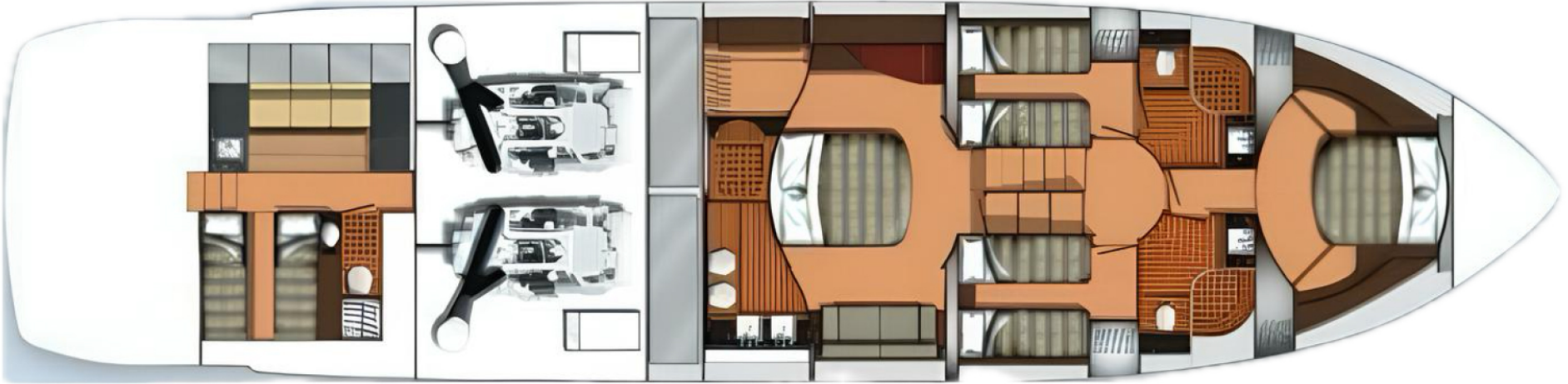
General Arrangement



FLYBRIDGE



MAIN DECK



LOWER DECK



KIRILL KUATOV

+377 607 93 15 20

+39 333 576 44 44

[Send e-mail](#)

[WhatsApp](#)

[Telegram](#)