



Brokerage

NAU
YACHTS

BLUE ZONE

MOTOR YACHT SANLORENZO 26.7M 2024

€6,490,000

FLAG - MARSHALL ISLANDS

MOTOR YACHT

BLUE ZONE



BLUE ZONE is a modern **Sanlorenzo SX88** delivered in 2024 and presented with exceptionally low engine hours. Combining the elegance of a contemporary Italian motor yacht with the versatility of an explorer-inspired platform, she represents one of the most successful crossover concepts in today's market.

Designed by Officina Italiana Design, with interiors by Zuccon International Project, **BLUE ZONE** features expansive panoramic glazing and an open architectural layout that fills the interior with natural light while maintaining a constant connection to the surrounding seascape. The result is a bright, contemporary atmosphere that feels both spacious and inviting.

A defining feature of the **SX88** is its exceptional relationship with the water. The innovative aft beach club creates a remarkably large waterfront living area, significantly expanding the usable outdoor space and providing effortless access to the sea. Whether used for swimming, relaxing at anchor or launching water toys, this area serves as one of the yacht's central social spaces.

The flybridge further enhances the yacht's versatility. Equipped with a retractable roof and opening side windows, it can be transformed from a sheltered lounge into a fully open terrace, adapting easily to changing weather conditions and cruising styles.

Accommodation is provided for up to 8 guests in 4 cabins, including a full-beam owner's suite. The contemporary layout and light-filled interiors make **BLUE ZONE** equally well suited to family cruising, entertaining and extended time on board. Power comes from three Volvo Penta D13 IPS 1050 engines producing 800 hp each. This configuration delivers a comfortable cruising speed of 18 knots and a maximum speed of 23 knots while offering the manoeuvrability and efficiency for which the IPS platform is known. Additional features include zero-speed stabilisers, joystick-controlled IPS handling, the Raymarine Diamond navigation package and an upgraded 28 kW auxiliary generator, ensuring comfort and ease of operation both underway and at anchor.

[see more information about M/Y BLUE ZONE at www.nauyachts.com](http://www.nauyachts.com)

SPECIFICATION

SHIPYARD, MODEL	Sanlorenzo SX88
BUILT	2024
LENGTH	26.7 m
WATERLINE LENGTH	23.95 m
HULL CONFIGURATION	PLANING
BEAM	7.2 m
RANGE	1000
DRAFT	1.7 m
GROSS TONNAGE	115 GT
YACHT CLASS	CE
CABINS	4+2
MASTER CABIN	LOWER DECK
GUESTS	8
BERTHS	8+3
CREW	3
HEADS	5+2

EXTERIOR DESIGN	OFFICINA ITALIANA DESIGN
INTERIOR DESIGN	OFFICINA ITALIANA DESIGN
HULL	GRP
SUPERSTRUCTURE	GRP
ENGINES	3 x Volvo Penta D13 IPS 1050 800 h.p.
TYPE OF DRIVE	VOLVO PENTA IPS
ENGINE HOURS	115 h
MAXIMUM SPEED	23 kn
CRUSING SPEED	18 kn
FUEL CONSUMPTION AT ECONOMICAL SPEED	~ 90 l/h
FUEL	9300 l
GREY WATER	550 l
BLACK WATER	550 l
FRESH WATER	2000 l
DISPLACEMENT	88

[see more information about M/Y BLUE ZONE at www.nauyachts.com](http://www.nauyachts.com)



EXTERIOR SANLORENZO SX88 2024 MY BLUE
ZONE

M/Y BLUE ZONE



EXTERIOR SANLORENZO SX88 2024 MY BLUE
ZONE

M/Y BLUE ZONE



EXTERIOR SANLORENZO SX88 2024 MY BLUE
ZONE

M/Y BLUE ZONE



EXTERIOR SANLORENZO SX88 2024 MY BLUE
ZONE

M/Y BLUE ZONE



EXTERIOR SANLORENZO SX88 2024 MY BLUE ZONE

M/Y BLUE ZONE



EXTERIOR SANLORENZO SX88 2024 MY BLUE
ZONE

M/Y BLUE ZONE



EXTERIOR SANLORENZO SX88 2024 MY BLUE
ZONE

M/Y BLUE ZONE



EXTERIOR SANLORENZO SX88 2024 MY BLUE
ZONE

M/Y BLUE ZONE



EXTERIOR SANLORENZO SX88 2024 MY BLUE
ZONE

M/Y BLUE ZONE



EXTERIOR SANLORENZO SX88 2024 MY BLUE
ZONE

M/Y BLUE ZONE



EXTERIOR SANLORENZO SX88 2024 MY BLUE
ZONE

M/Y BLUE ZONE



FLYBRIDGE LOUNGE AREA

M/Y BLUE ZONE



FLYBRIDGE DINING AREA

M/Y BLUE ZONE



FLYBRIDGE DINING AREA

M/Y BLUE ZONE



FLYBRIDGE DINING AREA

M/Y BLUE ZONE



FLYBRIDGE LOUNGE AREA

M/Y BLUE ZONE



MAIN HELM STATION

M/Y BLUE ZONE



BOW LOUNGE AREA

M/Y BLUE ZONE



COCKPIT SEATING AREA

M/Y BLUE ZONE



COCKPIT SEATING AREA

M/Y BLUE ZONE



COCKPIT SEATING AREA

M/Y BLUE ZONE



COCKPIT DINING AREA

M/Y BLUE ZONE



COCKPIT DINING AREA

M/Y BLUE ZONE



COCKPIT DINING AREA

M/Y BLUE ZONE



SWIMMING PLATFORM

M/Y BLUE ZONE



SWIMMING PLATFORM

M/Y BLUE ZONE



MAIN SALON LOUNGE AREA

M/Y BLUE ZONE



MAIN SALON LOUNGE AREA

M/Y BLUE ZONE



MAIN SALON DINING AREA

M/Y BLUE ZONE



MAIN SALON DINING AREA

M/Y BLUE ZONE



GALLEY

M/Y BLUE ZONE



GALLEY

M/Y BLUE ZONE



MASTER CABIN

M/Y BLUE ZONE



MASTER CABIN

M/Y BLUE ZONE



MASTER CABIN

M/Y BLUE ZONE



MASTER BATHROOM

M/Y BLUE ZONE



STAIRS FROM MD TO LD

M/Y BLUE ZONE



VIP CABIN

M/Y BLUE ZONE



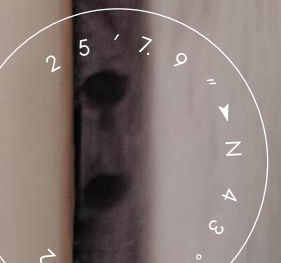
VIP BATHROOM

M/Y BLUE ZONE



GUEST CABIN

M/Y BLUE ZONE



GUEST CABIN

M/Y BLUE ZONE



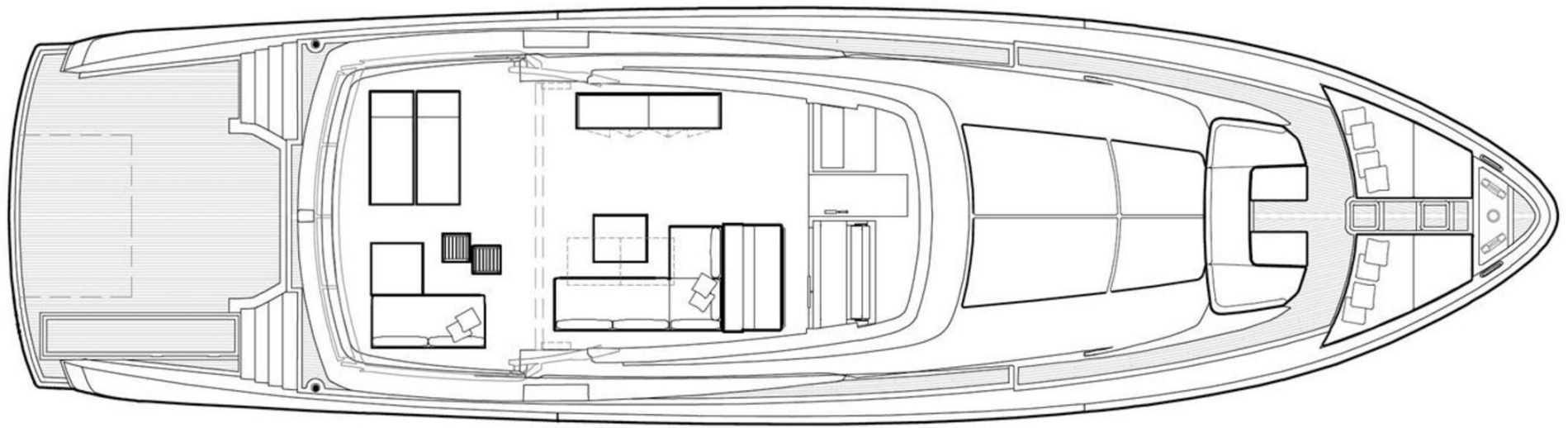
CREW AREA

M/Y BLUE ZONE

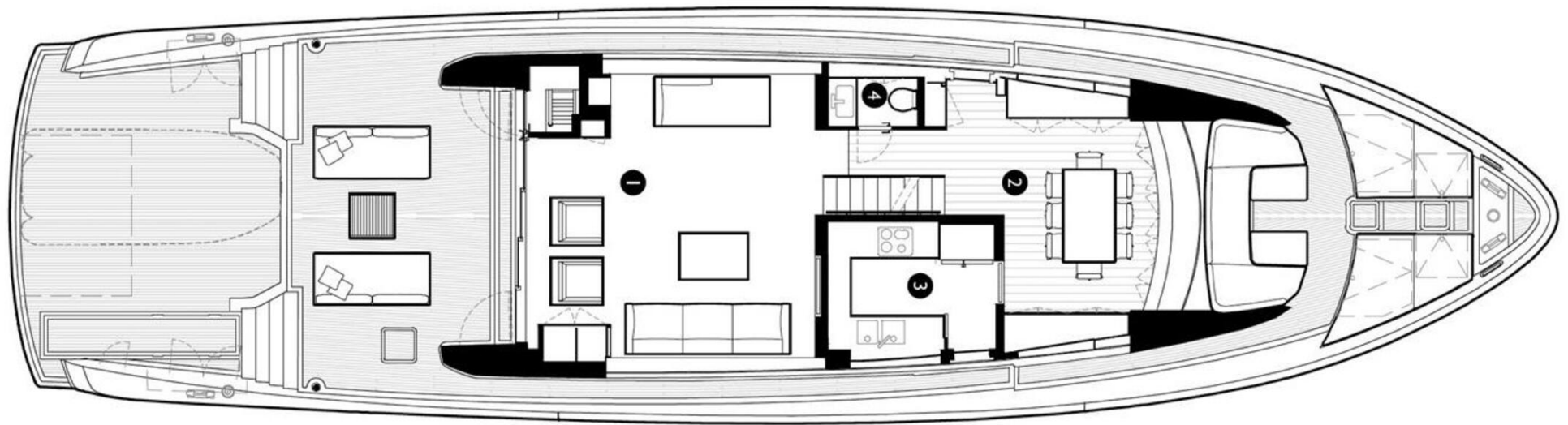
General Arrangement



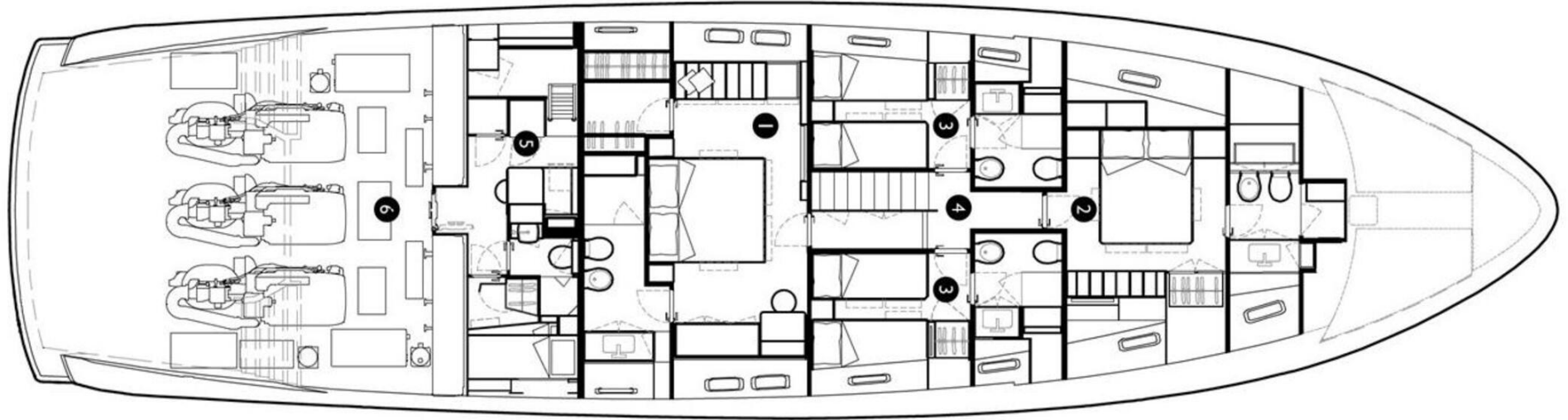
PROFILE



FLYBRIDGE



MAIN DECK



LOWER DECK



KIRILL KUATOV

+377 607 93 15 20

+39 333 576 44 44

[Send e-mail](#)

[WhatsApp](#)

[Telegram](#)