



Brokerage

NAU
YACHTS

44 ALLOY

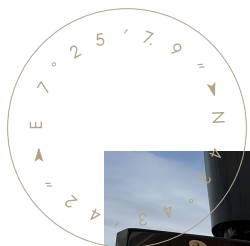
MOTOR YACHT SANLORENZO 44.5M 2023

€27,000,000

FLAG - MARSHALL ISLANDS

MOTOR YACHT

44 ALLOY



SANLORENZO 44ALLOY is a 44.5-metre motor yacht delivered by **Sanlorenzo** in 2023. Combining an all-aluminium construction, the shipyard's renowned build quality and contemporary design by Zuccon International Project, she represents one of the most compelling opportunities currently available in the modern 45-metre superyacht market.

Since delivery, the yacht has been used exclusively for private ownership and maintained to the highest standards. With approximately 865 engine hours and an internal volume of nearly 490 GT, she offers a rare opportunity to acquire an almost new pedigree yacht without the time and uncertainty associated with a new-build project.

The defining feature of **SANLORENZO 44ALLOY** is her remarkable two-level owner's domain. The full-beam owner's suite is positioned on the main deck and includes a private lobby, walk-in wardrobe and spacious en-suite bathroom. A dedicated internal staircase connects directly to a private office on the upper deck, creating a highly unusual arrangement that provides exceptional privacy and functionality. From the office, the owner enjoys direct access to a private terrace complete with a swimming pool and panoramic sea views.

Accommodation is arranged for up to 10 guests in 5 cabins. In addition to the owner's suite, the lower deck features two VIP cabins and two twin guest cabins. Separate crew quarters accommodate up to 9 crew members in 5 cabins, ensuring efficient operation and a high level of onboard service.

The interiors, designed by Zuccon International Project, embrace a contemporary aesthetic centred around natural light, expansive glazing and understated elegance. The main saloon flows seamlessly into the formal dining area, while the upper deck skylounge opens directly onto the exterior entertaining spaces, enhancing the connection between indoor and outdoor living.

The yacht's exterior areas have been carefully designed for life at sea. Guests can enjoy a spacious aft dining area, a generous sundeck with bar and lounge spaces, and a fully equipped beach club with a gym and direct access to the water. Together, these areas create a versatile and highly enjoyable environment for both private cruising and extended stays on board.

With her innovative owner's layout, substantial volume, modern aluminium construction and impeccable condition, **SANLORENZO 44ALLOY** stands out as one of the most attractive contemporary superyachts in her class.

[see more information about M/Y 44 ALLOY at www.nauyachts.com](http://www.nauyachts.com)

SPECIFICATION

SHIPYARD, MODEL	Sanlorenzo 44 Alloy
BUILT	2023
LENGTH	44.5 m
WATERLINE LENGTH	41.5 m
HULL CONFIGURATION	SEMI-DISPLACEMENT
BEAM	9 m
RANGE	2000
DRAFT	2.4 m
GROSS TONNAGE	490 GT
YACHT CLASS	CE
CABINS	5+5
MASTER CABIN	MAIN DECK
GUESTS	10
BERTHS	10+9
CREW	9
HEADS	8+5

EXTERIOR DESIGN	ZUCCON INTERNATIONAL PROJECT
INTERIOR DESIGN	ZUCCON INTERNATIONAL PROJECT
HULL	ALUMINUM
SUPERSTRUCTURE	ALUMINIUM
ENGINES	2 x MTU 16V2000 M96L 1432 h.p.
TYPE OF DRIVE	SHAFT LINE
ENGINE HOURS	865 h
MAXIMUM SPEED	20 kn
CRUSING SPEED	13 kn
FUEL CONSUMPTION AT ECONOMICAL SPEED	~ 360 l/h
FUEL	46000 l
GREY WATER	3500 l
BLACK WATER	2000 l
FRESH WATER	8000 l
DISPLACEMENT	300

[see more information about M/Y 44 ALLOY at www.nauyachts.com](http://www.nauyachts.com)



EXTERIOR SANLORENZO 44 ALLOY 2023

M/Y 44 ALLOY



EXTERIOR SANLORENZO 44 ALLOY 2023

M/Y 44 ALLOY



EXTERIOR SANLORENZO 44 ALLOY 2023

M/Y 44 ALLOY



EXTERIOR SANLORENZO 44 ALLOY 2023

M/Y 44 ALLOY



AFT MAIN DECK LOUNGE AREA

M/Y 44 ALLOY



AFT MAIN DECK LOUNGE AREA

M/Y 44 ALLOY



AFT MAIN DECK LOUNGE AREA

M/Y 44 ALLOY



AFT UPPER DECK LOUNGE AREA

M/Y 44 ALLOY



AFT UPPER DECK LOUNGE AREA

M/Y 44 ALLOY



AFT UPPER DECK LOUNGE AREA

M/Y 44 ALLOY



AFT UPPER DECK DINING AREA

M/Y 44 ALLOY



AFT UPPER DECK LOUNGE AREA

M/Y 44 ALLOY



BOW LOUNGE AREA

M/Y 44 ALLOY



BOW LOUNGE AREA

M/Y 44 ALLOY



BOW LOUNGE AREA

M/Y 44 ALLOY



BOW LOUNGE AREA

M/Y 44 ALLOY



BOW LOUNGE AREA

M/Y 44 ALLOY



BOW LOUNGE AREA

M/Y 44 ALLOY



SUNDECK DINING AREA

M/Y 44 ALLOY



SUNDECK GRILL

M/Y 44 ALLOY



SUNDECK DINING AREA

M/Y 44 ALLOY



SUNDECK LOUNGE AREA

M/Y 44 ALLOY



SUNDECK LOUNGE AREA

M/Y 44 ALLOY



UPPER DECK SALOON

M/Y 44 ALLOY



UPPER DECK SALOON

M/Y 44 ALLOY



MAIN HELM STATION

M/Y 44 ALLOY



MAIN HELM STATION

M/Y 44 ALLOY



OFFICE IN THE MASTER CABIN

M/Y 44 ALLOY



OFFICE IN THE MASTER CABIN

M/Y 44 ALLOY



OFFICE IN THE MASTER CABIN

M/Y 44 ALLOY



MASTER CABIN LOUNGE AREA

M/Y 44 ALLOY



MAKE-UP TABLE IN MASTER CABIN

M/Y 44 ALLOY



MASTER CABIN

M/Y 44 ALLOY



MASTER CABIN

M/Y 44 ALLOY



MASTER CABIN

M/Y 44 ALLOY



MASTER BATHROOM

M/Y 44 ALLOY



MAIN SALON LOBBY

M/Y 44 ALLOY



MAIN SALON LOUNGE AREA

M/Y 44 ALLOY



MAIN SALON LOUNGE AREA

M/Y 44 ALLOY



MAIN SALON LOUNGE AREA

M/Y 44 ALLOY



MAIN SALON LOUNGE AREA

M/Y 44 ALLOY



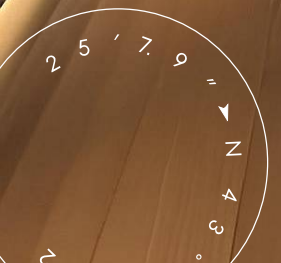
MAIN SALON LOUNGE AREA

M/Y 44 ALLOY



MAIN SALON DINING AREA

M/Y 44 ALLOY



MAIN SALON DINING AREA

M/Y 44 ALLOY



STAIRS FROM MD TO LD

M/Y 44 ALLOY



VIP CABIN

M/Y 44 ALLOY



VIP CABIN

M/Y 44 ALLOY



VIP CABIN

M/Y 44 ALLOY



VIP BATHROOM

M/Y 44 ALLOY



VIP CABIN

M/Y 44 ALLOY



VIP BATHROOM

M/Y 44 ALLOY



VIP CABIN

M/Y 44 ALLOY



GUEST CABIN

M/Y 44 ALLOY



GUEST CABIN

M/Y 44 ALLOY



GUEST BATHROOM

M/Y 44 ALLOY



GUEST CABIN

M/Y 44 ALLOY



GUEST BATHROOM

M/Y 44 ALLOY



GUEST CABIN

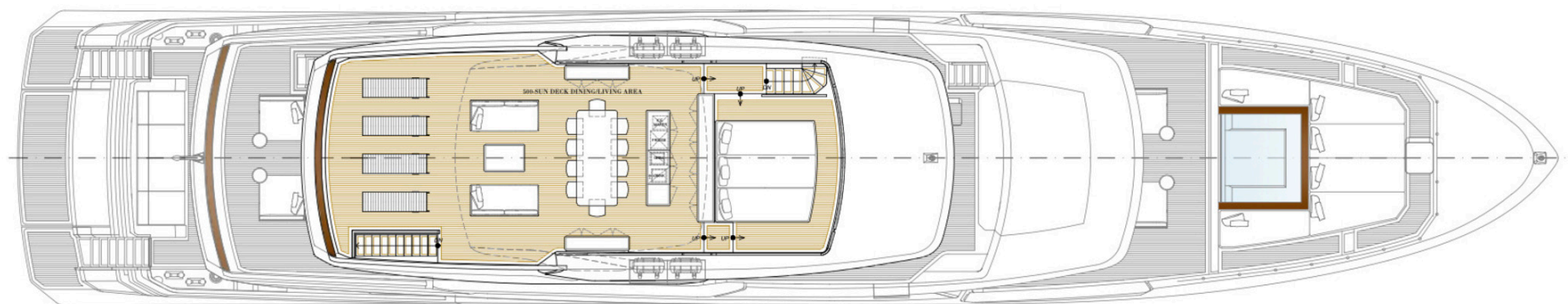
M/Y 44 ALLOY



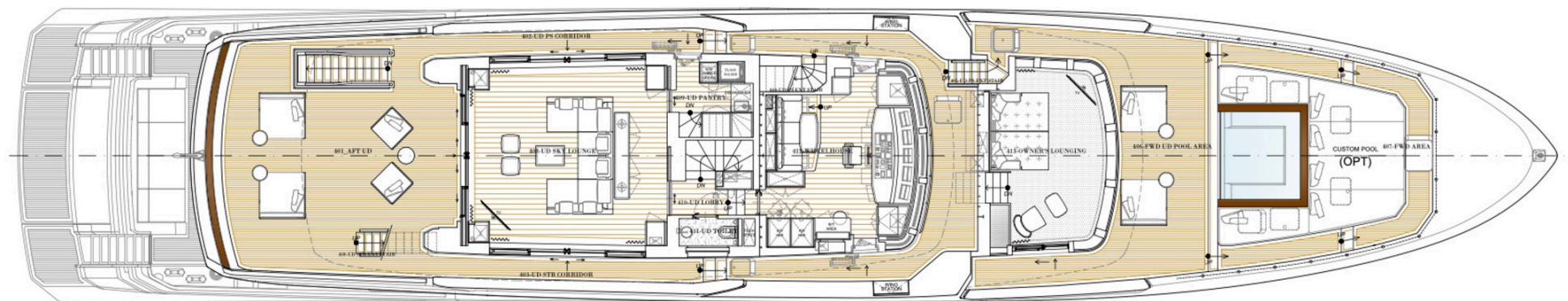
BEACH CLUB

M/Y 44 ALLOY

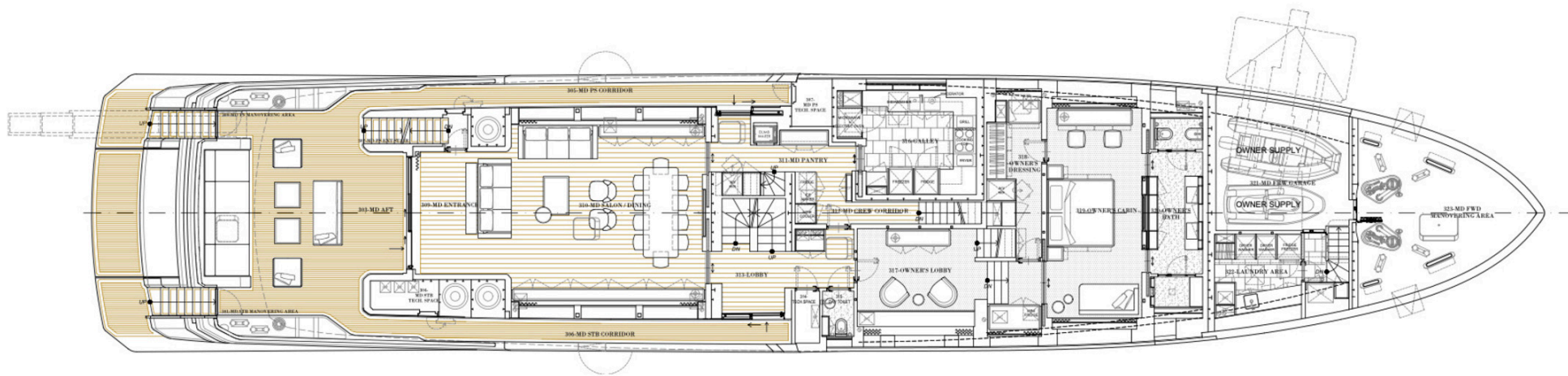
General Arrangement



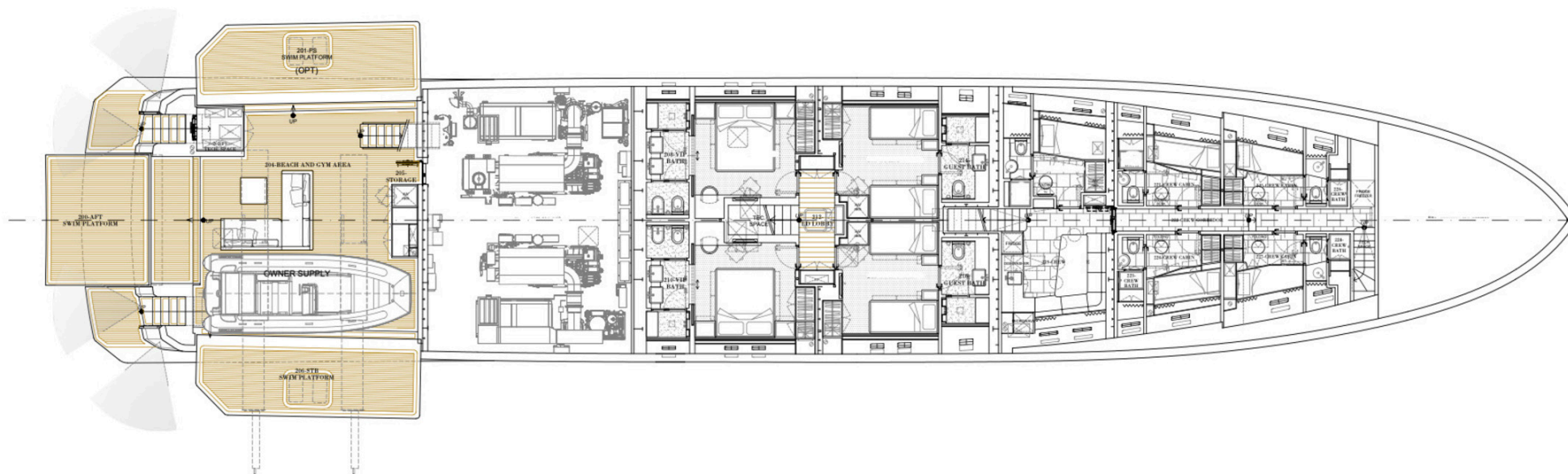
SUNDECK



UPPER DECK



MAIN DECK



LOWER DECK



KIRILL KUATOV

+377 607 93 15 20

+39 333 576 44 44

[Send e-mail](#)

[WhatsApp](#)

[Telegram](#)