



Brokerage

NAU
YACHTS

RAY

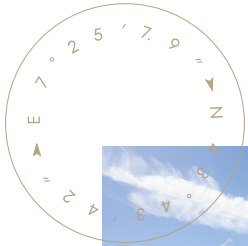
MOTOR YACHT NUMARINE 32.63M 2025

€12,900,000

FLAG -

MOTOR YACHT

RAY



RAY is a 32-metre **Numarine 32XP** explorer yacht delivered in 2025 and represents one of the most unique opportunities currently available in the explorer yacht market. She is the only **32XP** built with full MCA LY3 certification, Commercial Short Range status and MAN Tier III engines equipped with SCR technology, placing her in a category of her own within the highly successful **Numarine XP** series.

Combining long-range cruising capability with remarkable onboard volume and comfort, **RAY** offers approximately 299 GT of internal volume and around 330 square metres of living space, providing accommodation and amenities more commonly associated with significantly larger yachts.

Designed by Can Yalman, the yacht balances contemporary explorer styling with a highly practical layout intended for extended cruising. Her long-range credentials are equally impressive, delivering approximately 4,000 nautical miles of range at an economical speed of 8 knots, while comfortably cruising at 12 knots and reaching a maximum speed of 13.8 knots.

Particular attention has been paid to onboard comfort. Interior sound levels remain below 50 dB, while vibration levels are kept under 1 mm/sec, creating a refined and remarkably quiet environment even during long passages.

One of the yacht's standout features is her expansive 60-square-metre sundeck, complete with a bar, dining area, lounge spaces and an additional helm station. The upper aft deck is designed to accommodate a 7-metre tender and two jet skis and transforms into a spacious open terrace overlooking the sea once the toys have been launched.

Forward, guests can enjoy a dedicated lounge area with sunpads, while the beach club at water level features a bar, refrigerator, ice maker and direct access to the sea, creating an inviting waterfront retreat.

The main saloon combines a comfortable lounge area with a separate dining space for up to eight guests and benefits from large panoramic windows that maximise natural light and sea views. A fully equipped professional galley includes multiple refrigerators, a wine cooler, dishwasher and a service lift connecting the upper decks, ensuring smooth and efficient operation throughout the yacht.

A particularly rare feature for a yacht of this size is a dedicated main-deck gym with floor-to-ceiling windows and panoramic sea views, providing an exceptional fitness space rarely found aboard yachts in this segment.

Accommodation is provided for up to 10 guests in 5 cabins. The full-beam owner's suite occupies more than 30 square metres on the main deck and features a private lounge area, workspace, walk-in wardrobe and spacious en-suite bathroom. The lower deck accommodates two VIP cabins and two twin guest cabins, each with its own en-suite facilities. Separate crew quarters accommodate up to 8 crew members, including a dedicated captain's cabin.

Offered with a factory warranty valid until July 2027 and available immediately without the lead time associated with a new build, **RAY** stands out as one of the most compelling explorer yachts currently available in the 30-metre segment.

[see more information on the website at www.marineyachts.com](https://www.marineyachts.com)

SPECIFICATION

SHIPYARD, MODEL	Numarine 32XP
BUILT	2025
LENGTH	32.63 m
WATERLINE LENGTH	30.69 m
HULL CONFIGURATION	DISPLACEMENT
BEAM	8 m
RANGE	4000
DRAFT	2.71 m
GROSS TONNAGE	299 GT
YACHT CLASS	MCA LY3
CABINS	5+3
MASTER CABIN	MAIN DECK
GUESTS	10
BERTHS	10+5
CREW	6
HEADS	6+3

EXTERIOR DESIGN	CAN YALMAN
INTERIOR DESIGN	CAN YALMAN
HULL	STEEL
SUPERSTRUCTURE	ALUMINIUM
ENGINES	2 x MAN 800 h.p.
TYPE OF DRIVE	SHAFT LINE
ENGINE HOURS	N/A
MAXIMUM SPEED	14 kn
CRUSING SPEED	9 kn
FUEL CONSUMPTION AT ECONOMICAL SPEED	~ 50 l/h
FUEL	29000 l
GREY WATER	2000 l
BLACK WATER	2000 l
FRESH WATER	3500 l
DISPLACEMENT	270

[see more information about M/Y RAY at www.nauyachts.com](http://www.nauyachts.com)



EXTERIOR NUMARINE 32 XP 2025 MY RAY

M/Y RAY



EXTERIOR NUMARINE 32 XP 2025 MY RAY

M/Y RAY



EXTERIOR NUMARINE 32 XP 2025 M/Y RAY

M/Y RAY



EXTERIOR NUMARINE 32 XP 2025 M/Y RAY

M/Y RAY



EXTERIOR NUMARINE 32 XP 2025 MY RAY

M/Y RAY



EXTERIOR NUMARINE 32 XP 2025 MY RAY

M/Y RAY



BEACH CLUB

M/Y RAY



BEACH CLUB

M/Y RAY



BEACH CLUB

M/Y RAY



BOW LOUNGE AREA

M/Y RAY



SUNDECK LOUNGE AREA

M/Y RAY



SUNDECK GRILL

M/Y RAY



SECOND HELM STATION

M/Y RAY



SUNDECK DINING AREA

M/Y RAY



UPPER DECK SALON BAR

M/Y RAY



UPPER DECK SALON BAR

M/Y RAY



UPPER DECK SALON BAR

M/Y RAY



MAIN SALON LOUNGE AREA

M/Y RAY



MAIN SALON LOUNGE AREA

M/Y RAY



MAIN SALON LOUNGE AREA

M/Y RAY



MAIN SALON DINING AREA

M/Y RAY



MAIN SALON DINING AREA

M/Y RAY



MAIN HELM STATION

M/Y RAY



MASTER CABIN

M/Y RAY



MASTER CABIN

M/Y RAY



MASTER CABIN

M/Y RAY



MASTER CABIN

M/Y RAY



MASTER BATHROOM

M/Y RAY



STAIRS FROM MD TO LD

M/Y RAY



VIP CABIN

M/Y RAY



VIP BATHROOM

M/Y RAY



VIP CABIN

M/Y RAY



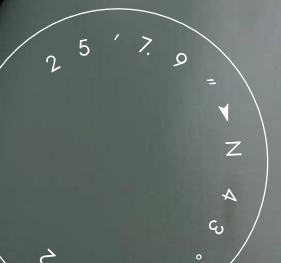
VIP BATHROOM

M/Y RAY



GUEST CABIN

M/Y RAY



GUEST CABIN

M/Y RAY



VIP CABIN

M/Y RAY



VIP BATHROOM

M/Y RAY



GALLEY

M/Y RAY



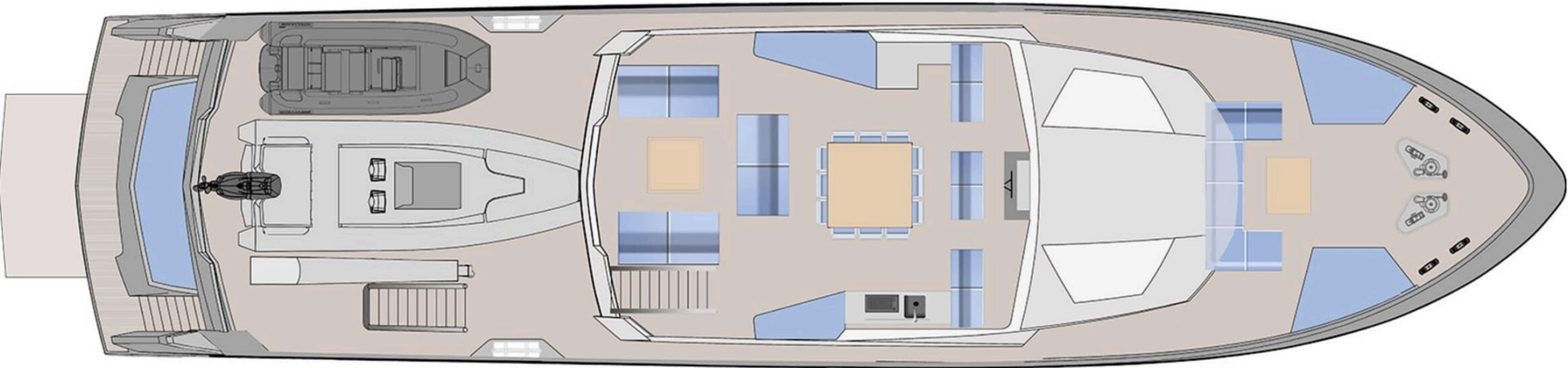
GALLEY

M/Y RAY

General Arrangement



PROFILE



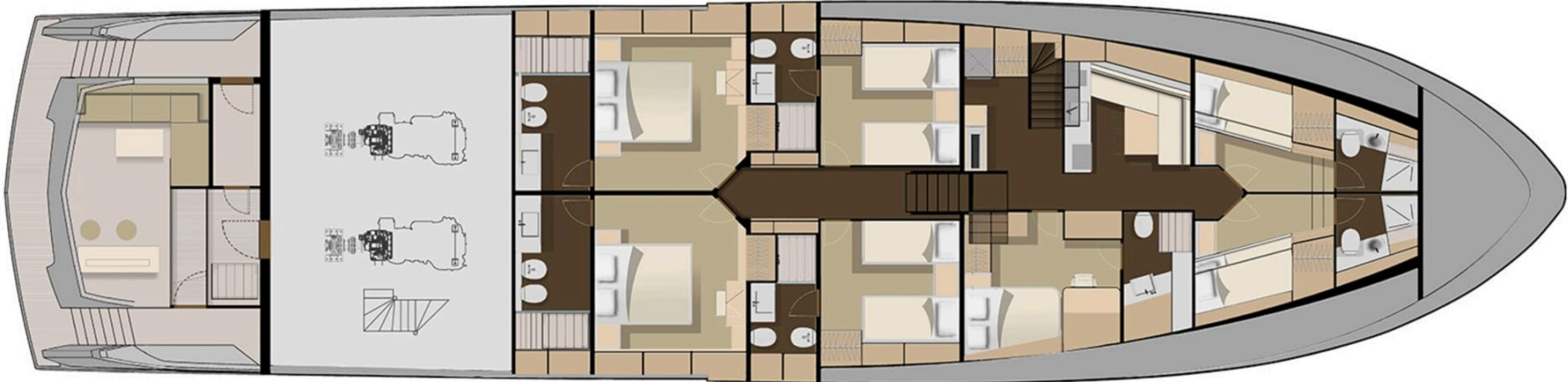
SUNDECK



UPPER DECK



MAIN DECK



LOWER DECK



KIRILL KUATOV

+377 607 93 15 20

+39 333 576 44 44

[Send e-mail](#)

[WhatsApp](#)

[Telegram](#)