



Brokerage

**NAU**  
YACHTS

**FOUZ**

MOTOR YACHT    SANLORENZO 26.7M    2022

**€5,950,000**

FLAG -

MOTOR YACHT

## FOUZ



**FOUZ** is a truly unique interpretation of the **Sanlorenzo SX88**, delivered in 2022 for her original owner and never offered for charter. She combines **Sanlorenzo's** revolutionary Social Yacht concept with a fully bespoke Bentley Home interior and Fendi Casa outdoor furnishings, setting her apart from every other **SX88** on the market.

Rather than selecting individual designer pieces, the owner commissioned a complete Bentley Home interior, giving the yacht a cohesive residential aesthetic rarely found on a yacht of this size. Bespoke furniture, carefully curated materials and a striking Carrara marble dining table create an atmosphere that feels more like a contemporary luxury residence than a traditional yacht. The fully equipped galley integrates seamlessly into the open-plan main deck, preserving the signature sense of space that defines the **SX88**. On the flybridge, Fendi Casa continues the design story with an elegant lounge, a mobile bar and an integrated grill. A generous beach club with a hydraulic swim platform provides effortless access to the water and naturally becomes the focal point for life at anchor.

Accommodation is arranged for up to eight guests in four cabins. The full-beam master suite benefits from abundant natural light, thoughtfully designed storage and a calm, contemporary ambience, while the guest cabins provide exceptional comfort for both family holidays and cruises with friends.

Powered by triple Volvo Penta IPS engines, **FOUZ** delivers efficient performance, exceptional manoeuvrability and effortless handling. Zero Speed stabilisers significantly enhance comfort both underway and at anchor, making the yacht equally appealing to an experienced owner-operator or those cruising with a professional crew.

With her one-of-a-kind Bentley Home interior, Fendi Casa outdoor living spaces and distinctive interpretation of the **SX88** platform, **FOUZ** offers a level of customisation and design rarely seen in this segment, creating an onboard experience that is as elegant as it is unique.

[see more information about M/Y FOUZ at www.nauyachts.com](http://www.nauyachts.com)

# SPECIFICATION

SHIPYARD, MODEL	Sanlorenzo SX88
BUILT	2022
LENGTH	26.7 m
WATERLINE LENGTH	22.43 m
HULL CONFIGURATION	PLANING
BEAM	7.2 m
RANGE	1000
DRAFT	1.83 m
GROSS TONNAGE	116 GT
YACHT CLASS	N/A
CABINS	4+2
MASTER CABIN	LOWER DECK
GUESTS	8
BERTHS	8+3
CREW	3
HEADS	5+2

EXTERIOR DESIGN	OFFICINA ITALIANA DESIGN
INTERIOR DESIGN	BENTLEY HOME
HULL	GRP
SUPERSTRUCTURE	GRP
ENGINES	3 x Volvo Penta IPS 800 h.p.
TYPE OF DRIVE	VOLVO PENTA IPS
ENGINE HOURS	633 h
MAXIMUM SPEED	23 kn
CRUSING SPEED	20 kn
FUEL CONSUMPTION AT ECONOMICAL SPEED	~ 330 l/h
FUEL	9300 l
GREY WATER	550 l
BLACK WATER	550 l
FRESH WATER	2000 l
DISPLACEMENT	88

[see more information about M/Y FOUZ at www.nauyachts.com](http://www.nauyachts.com)



EXTERIOR SANLORENZO SX88 2022 MY FOUZ

M/Y FOUZ



EXTERIOR SANLORENZO SX88 2022 MY FOUZ

M/Y FOUZ



EXTERIOR SANLORENZO SX88 2022 MY FOUZ

M/Y FOUZ



EXTERIOR SANLORENZO SX88 2022 MY FOUZ

M/Y FOUZ



EXTERIOR SANLORENZO SX88 2022 MY FOUZ

M/Y FOUZ



EXTERIOR SANLORENZO SX88 2022 MY FOUZ

M/Y FOUZ



SWIMMING PLATFORM

M/Y FOUZ



COCKPIT SEATING AREA

M/Y FOUZ



COCKPIT SEATING AREA

M/Y FOUZ



PORT SIDE

M/Y FOUZ



FLYBRIDGE LOUNGE AREA

M/Y FOUZ



FLYBRIDGE LOUNGE AREA

M/Y FOUZ



FLYBRIDGE DINING AREA

M/Y FOUZ



MAIN SALON LOUNGE AREA

M/Y FOUZ



MAIN SALON LOUNGE AREA

M/Y FOUZ



MAIN SALON LOUNGE AREA

M/Y FOUZ



MAIN SALON LOUNGE AREA

M/Y FOUZ



MAIN SALON DINING AREA

M/Y FOUZ



MASTER CABIN

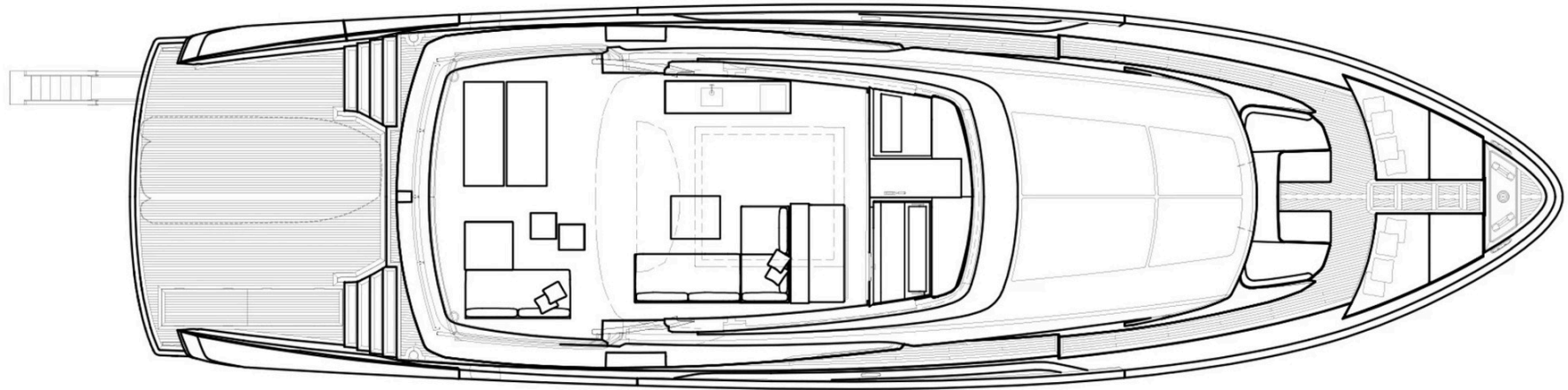
M/Y FOUZ



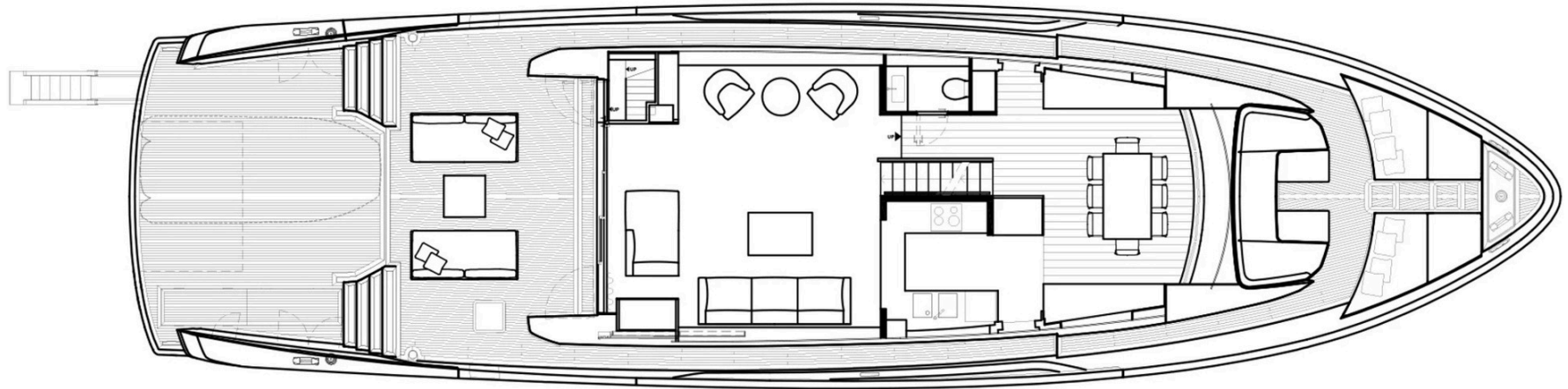
GUEST CABIN

M/Y FOUZ

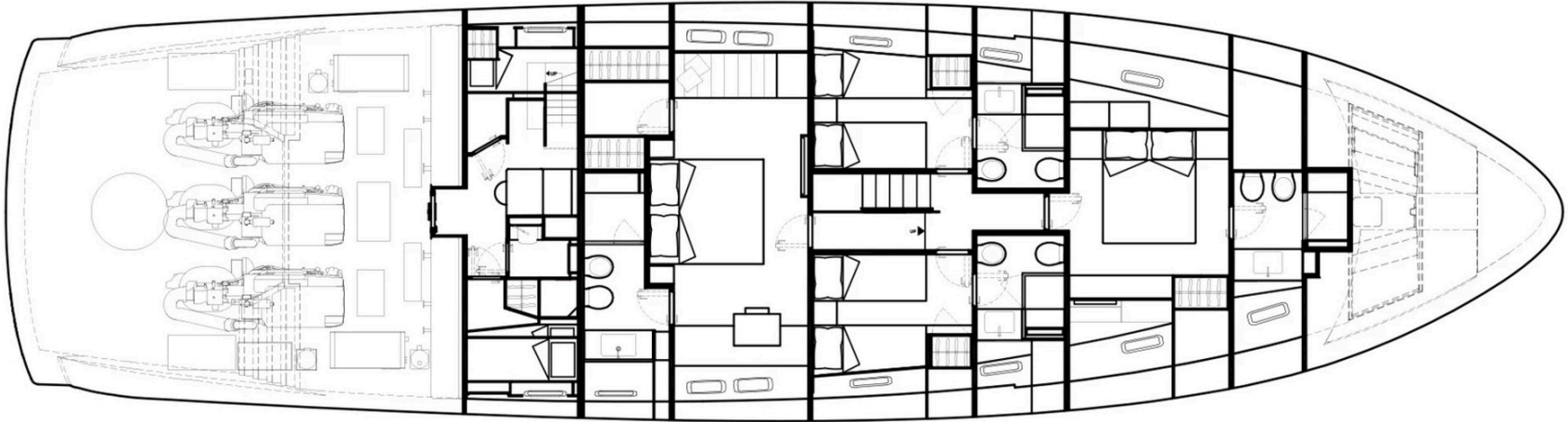
# General Arrangement



FLYBRIDGE



MAIN DECK



LOWER DECK



KIRILL KUATOV

+377 607 93 15 20

+39 333 576 44 44

[Send e-mail](#)

[WhatsApp](#)

[Telegram](#)